

DISCLAIMER:

This unrecorded Record of Survey was donated to the City of Tucson. The City of Tucson provides this data for your personal use "as is." Additionally, the City of Tucson provides this information with the understanding that it is not guaranteed to be accurate, correct or complete and conclusions drawn from such information are the responsibility of the user.

15TH STREET

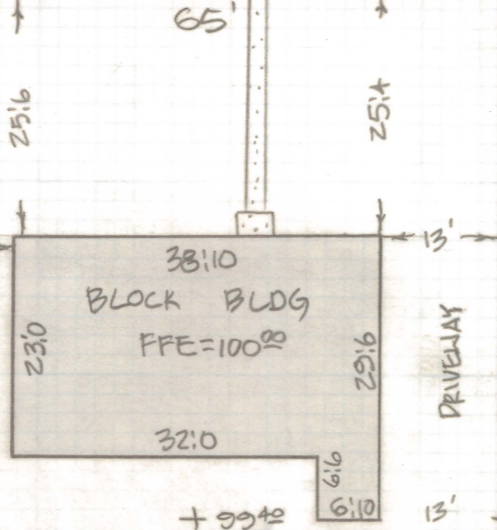
STREET

2' ROLLED CURB

SIDEWALK

25'10"

20'



ALLEY

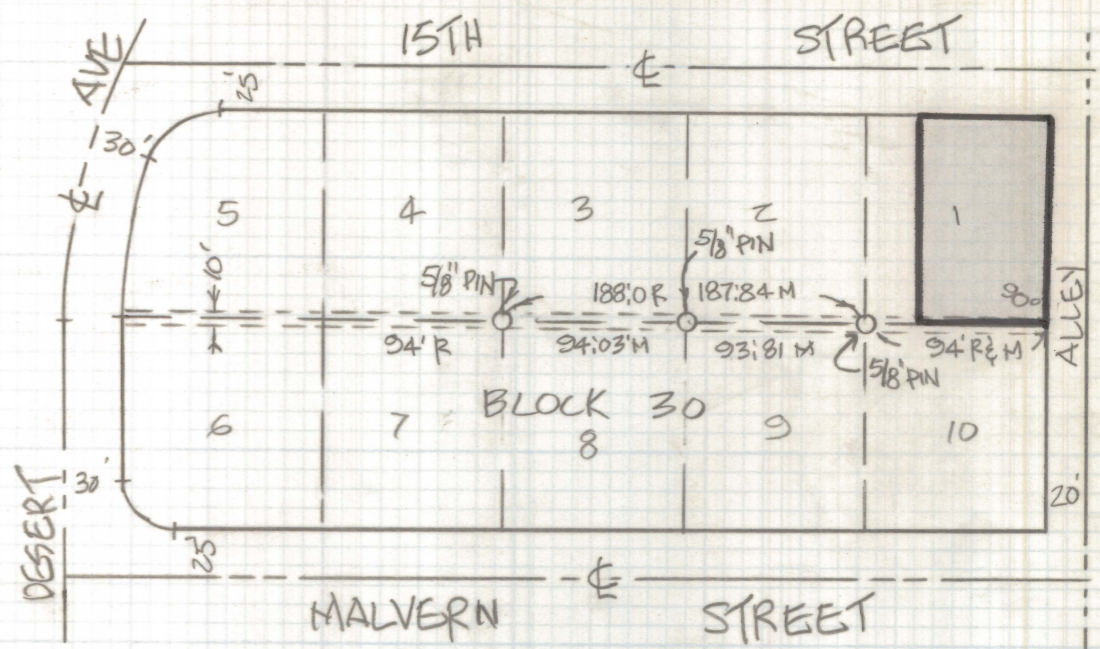
6' CHAIN LINK FENCE

10' UTILITY EASEMENT

NOTES

- (1) ○ INDICATES 1/2" PIN MKD LS 4680 SET UNLESS NOTED
- (2) R - MAP OR DEED RECORD
- (3) M - MEASURED
- (4) ELEVATION OF 100.00 ASSUMED FOR FLOOR OF HOUSE
- (5) +99.80 = SPOT ELEVATION

NORTH SCALE: 1" = 20'



LOCATION MAP SCALE: 1" = 100'

RESULTS OF SURVEY

OF THE EAST 65 FEET OF LOT 1 OF BLOCK 30 OF LINDEN PARK AS RECORDED IN BOOK 9 OF MAPS AND PLATS AT PAGE 57 IN THE OFFICE OF THE PIMA COUNTY RECORDER, PIMA COUNTY, ARIZONA.



ROBERT F. MELLEN REGISTERED LAND SURVEYOR TUCSON, ARIZONA JOB 88-113