

DISCLAIMER:

This unrecorded Record of Survey was donated to the City of Tucson. The City of Tucson provides this data for your personal use "as is." Additionally, the City of Tucson provides this information with the understanding that it is not guaranteed to be accurate, correct or complete and conclusions drawn from such information are the responsibility of the user.

PD 1/4" GLO

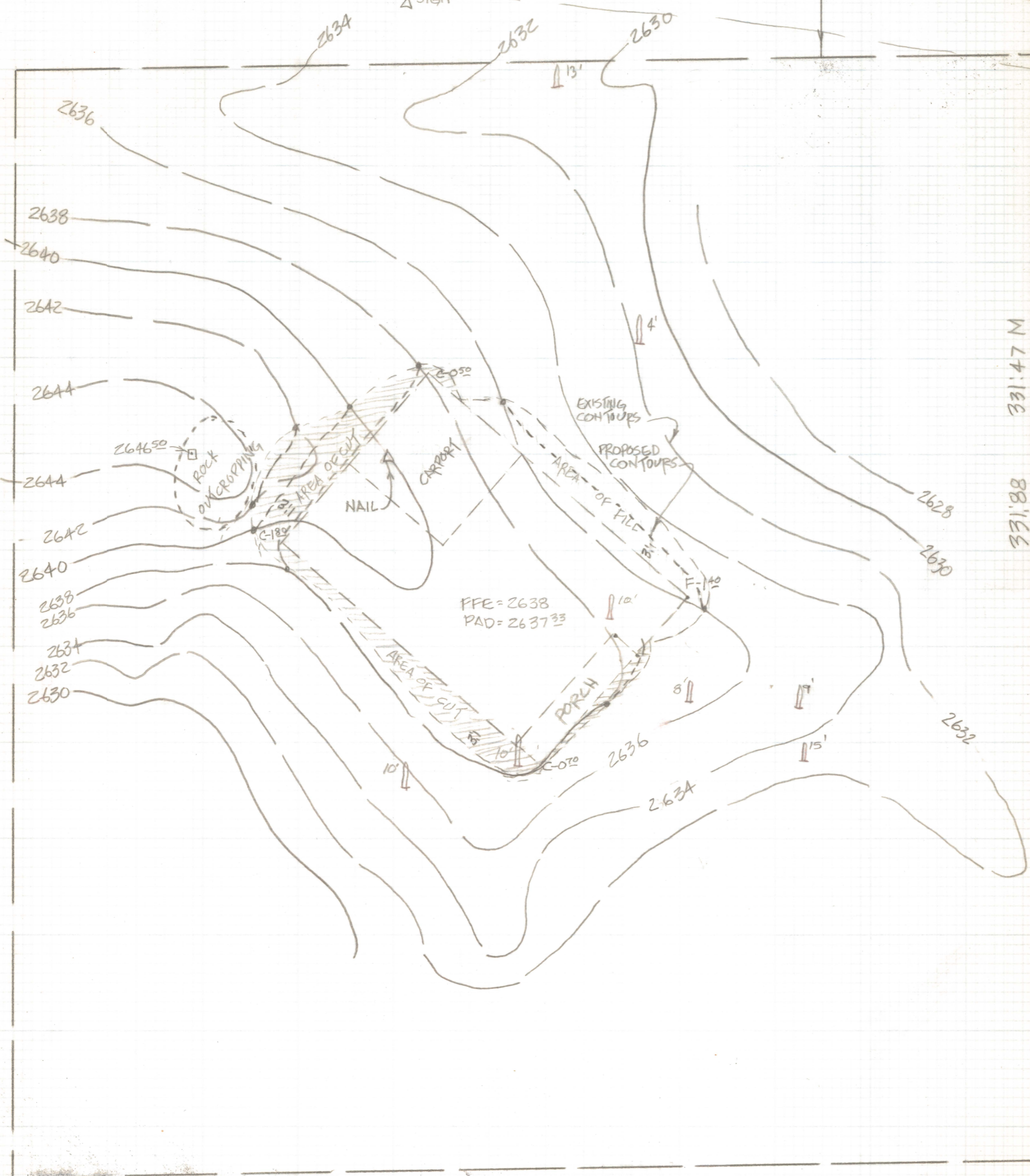
FD 1/2" PIN LS 10,046

NOTES:

- (1) THIS IS NOT A BOUNDARY SURVEY - TOPO ONLY
- (2) Δ - INDICATES JAGUARO CACTUS AND ITS HEIGHT
- (3) ELEVATIONS BASED ON NATIONAL GEODETIC VERTICAL DATUM OF 1929

50' FOR ROADS & UTILITIES

50' TYPICAL



RESULTS OF SURVEY

OF LOT 63 OF SECTION 7 TOWNSHIP 15 SOUTH RANGE 13 EAST GILA & SALT RIVER BASE & MERIDIAN, PIMA COUNTY, ARIZONA. EXCEPT THE EAST 336 FEET

331.47 MEAS.

331.47 M

331.88

331.88

89° 02' 20" MEAS.

265.98 265.13 MEAS.

FD 1/2" PIN LS 10,046

FD 1/2" PIN LS 10,046

SCALE: 1" = 20'
CONTOUR INTERVAL = 2'



ROBERT F. MELLEN
REGISTERED LAND SURVEYOR
TUCSON, ARIZONA
JOB 88-114