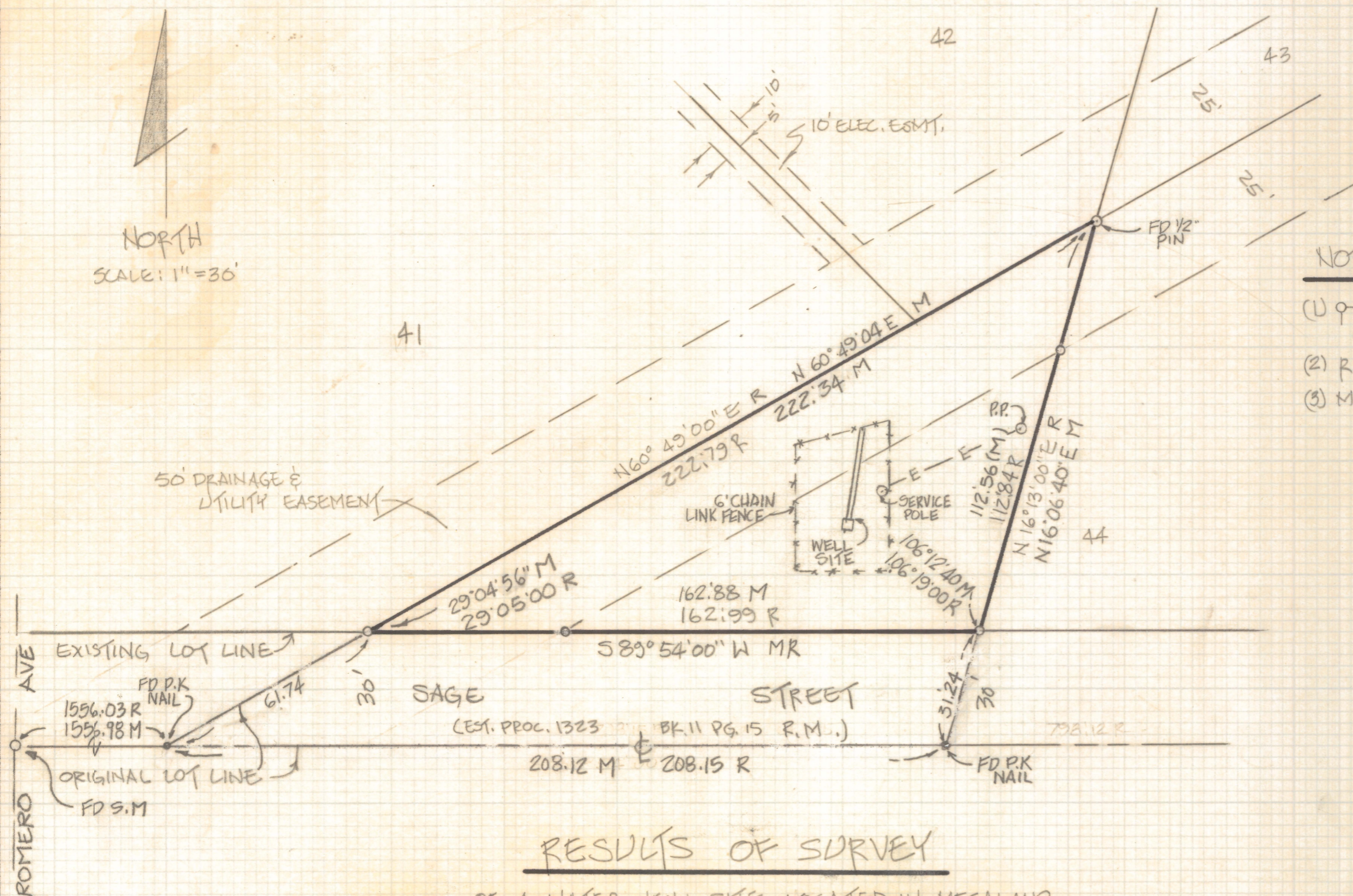


DISCLAIMER:

This unrecorded Record of Survey was donated to the City of Tucson. The City of Tucson provides this data for your personal use "as is." Additionally, the City of Tucson provides this information with the understanding that it is not guaranteed to be accurate, correct or complete and conclusions drawn from such information are the responsibility of the user.



- NOTES:
- (1) ♀ INDICATES 1/2" PIN MKD LS 4680 SET UNLESS NOTED
 - (2) R - MAP OR DEED RECORD
 - (3) M - MEASURED

RESULTS OF SURVEY

OF A WATER WELL SITE LOCATED IN MESALAND SUBDIVISION AS RECORDED IN BOOK 11 OF MAPS AND PLATS AT PAGE 72 IN THE OFFICE OF THE PIMA COUNTY RECORDER, PIMA COUNTY, ARIZONA. EXCEPT THE SOUTH 30 FEET, FOR ROAD PURPOSES.



ROBERT F. MELLEN
REGISTERED LAND SURVEYOR
TUCSON, ARIZONA
JOB 88-115