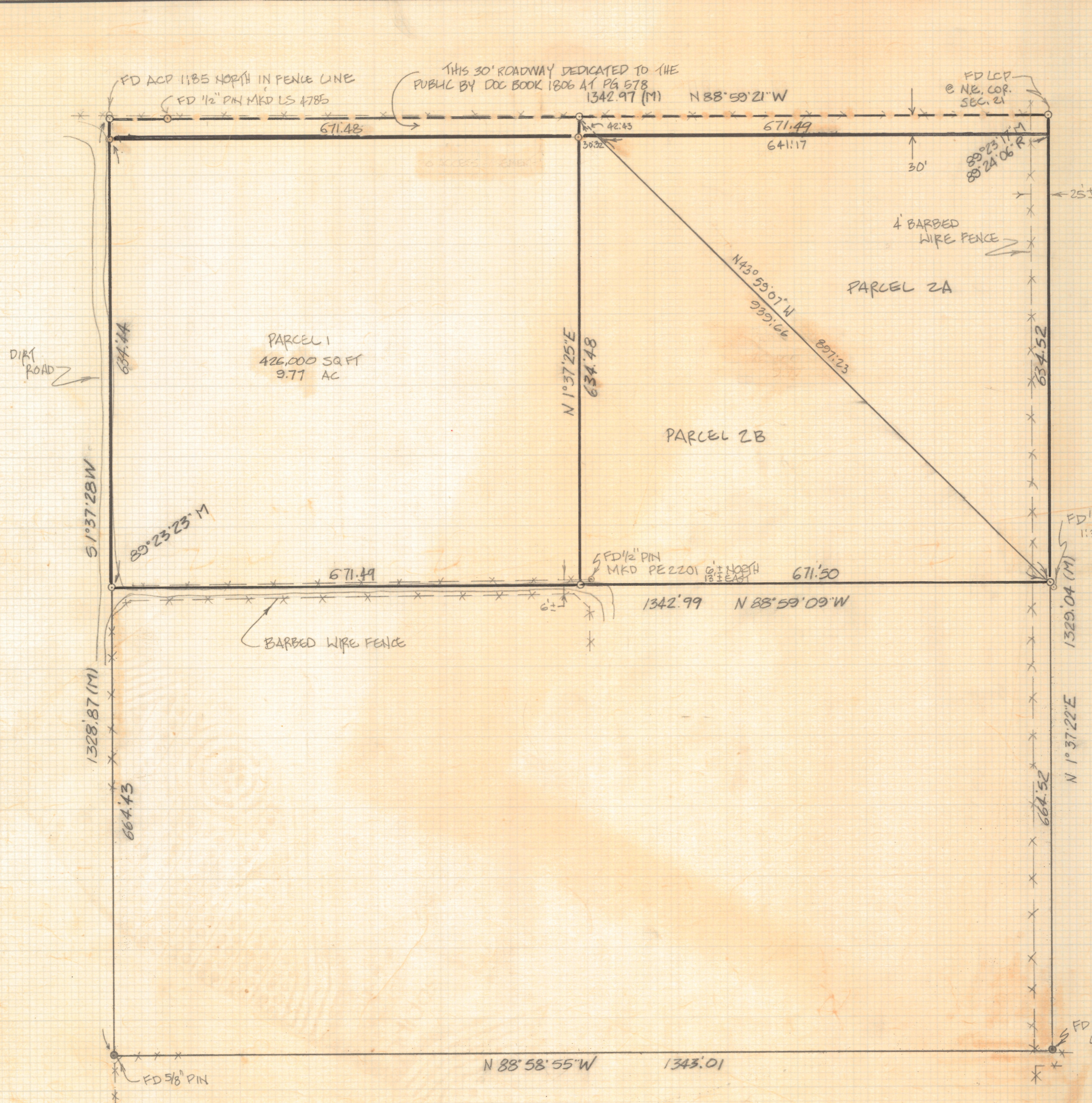
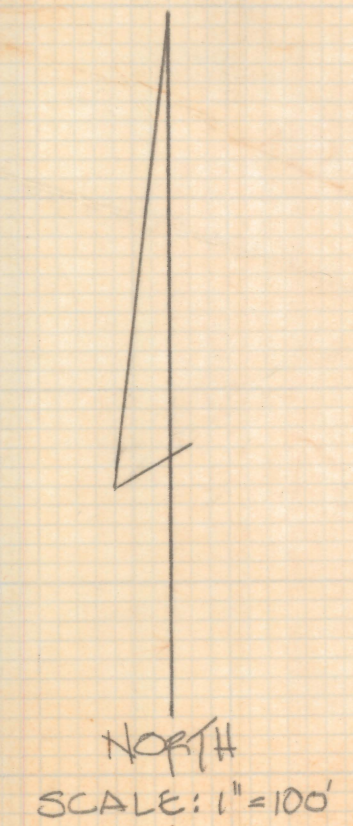


# **DISCLAIMER:**

**This unrecorded Record of Survey was donated to the City of Tucson. The City of Tucson provides this data for your personal use "as is." Additionally, the City of Tucson provides this information with the understanding that it is not guaranteed to be accurate, correct or complete and conclusions drawn from such information are the responsibility of the user.**



- NOTES:
- (1) ○ INDICATES 1/2" PIN MKD LS 4680 SET UNLESS NOTED
  - (2) ACP - ALUMINUM CAPPED PIN
  - (3) LCP - LEAD CAPPED PIN



RESULTS OF SURVEY

OF THE NORTH HALF OF THE NORTH-EAST QUARTER OF THE NORTHEAST QUARTER OF SECTION 21 TOWNSHIP 15 SOUTH OF RANGE 17 EAST, GILA AND SALTRIVER BASE AND MERIDIAN, PIMA COUNTY, ARIZONA.



REVISED 12-14-88 PARCEL 2A & 2B  
REVISED 12-1-88

ROBERT P. MELLEN  
REGISTERED LAND SURVEYOR  
TUCSON, ARIZONA  
JOB 88-133