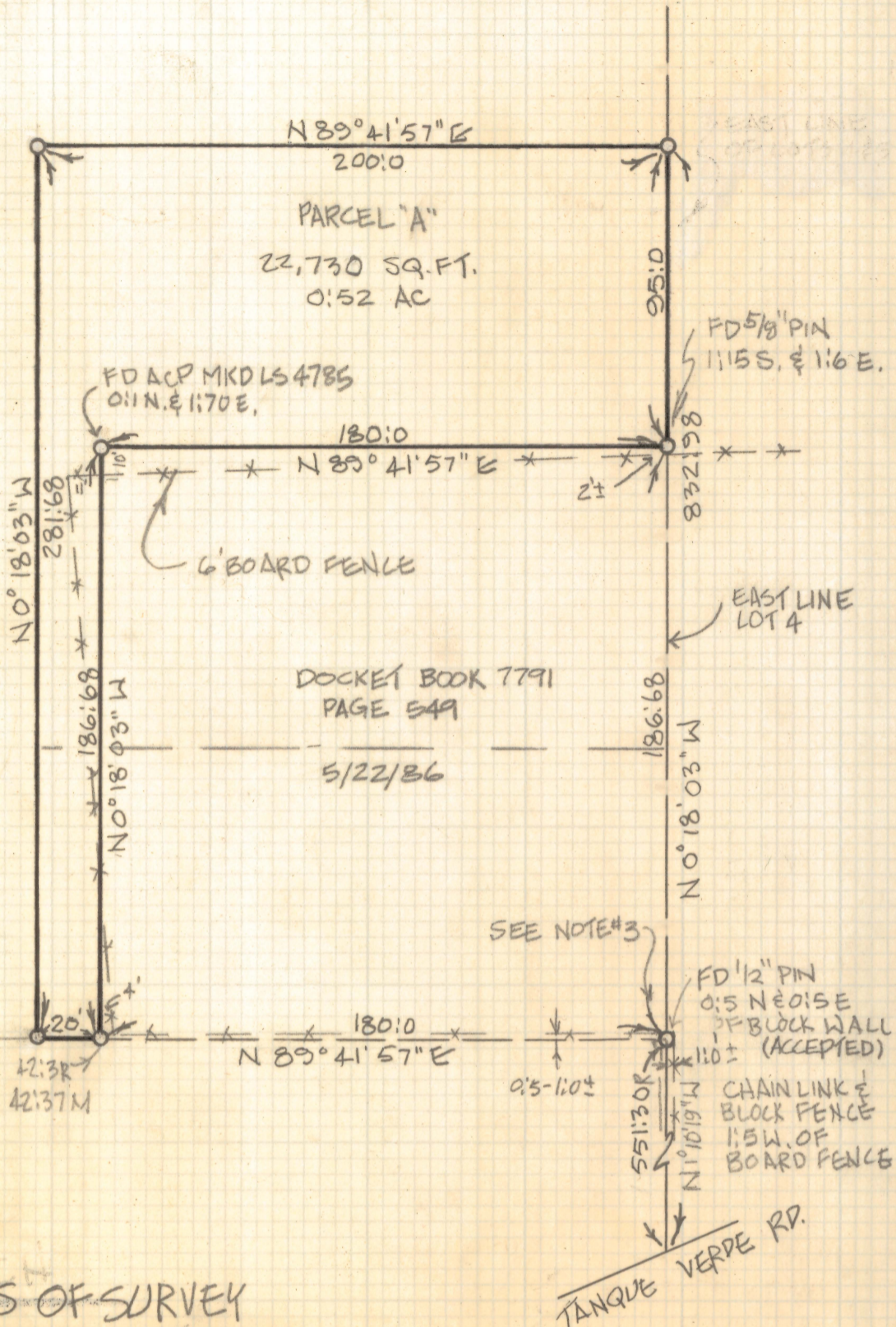


DISCLAIMER:

This unrecorded Record of Survey was donated to the City of Tucson. The City of Tucson provides this data for your personal use "as is." Additionally, the City of Tucson provides this information with the understanding that it is not guaranteed to be accurate, correct or complete and conclusions drawn from such information are the responsibility of the user.



LOT 4
LOT 5



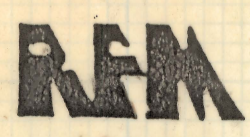
RESULTS OF SURVEY

OF A PORTION OF LOTS 4 & 5 OF SECTION 6, TOWNSHIP 14 SOUTH OF RANGE 15 EAST, G & S. R. B & M, PIMA COUNTY, ARIZONA.



- NOTES:**
- (1) \circ INDICATES 1/2" PIN MKD LS 4680 SET UNLESS NOTED
 - (2) PARTIALLY BASED ON SURVEY BY OSBORNE, PETERSEN, WALBERT, ASSOC. JOB # 86041-102
 - (3) FOUND 5/8" STEEL PIN MKD LS 4785 3.05 EAST OF CORNER

REVISIONS	DATE
	DATE: 10-23-88
	DR BY: GM CK BY: REM
	JOB NO. 88-143
	SHEET 1 OF 1



ROBERT F. MELLEN
REGISTERED LAND SURVEYOR
1250 W. MOHAVE ST. TUCSON, ARIZONA
(602) 888-1012

SCALE: 1" = 50'