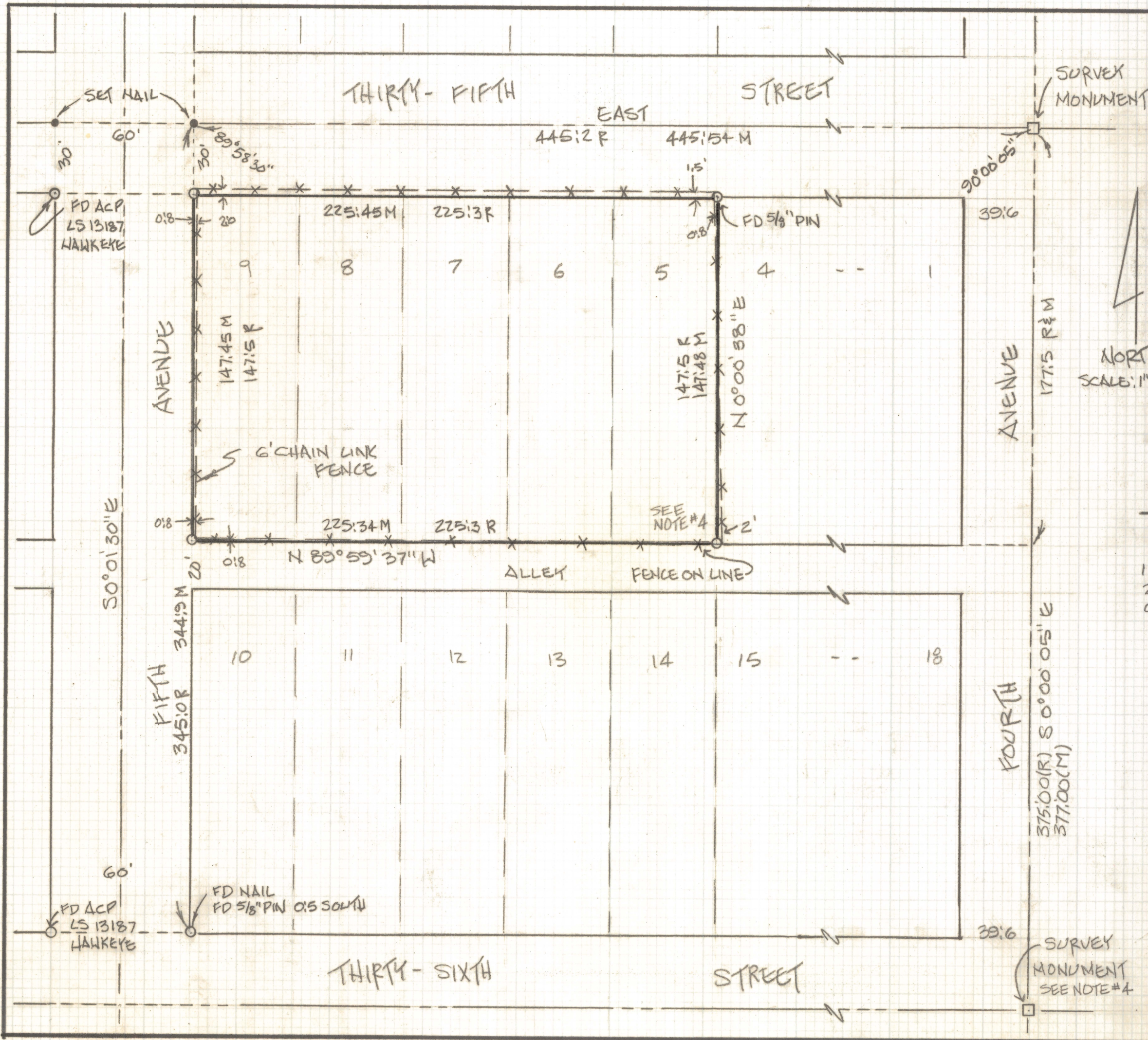


DISCLAIMER:

This unrecorded Record of Survey was donated to the City of Tucson. The City of Tucson provides this data for your personal use "as is." Additionally, the City of Tucson provides this information with the understanding that it is not guaranteed to be accurate, correct or complete and conclusions drawn from such information are the responsibility of the user.



- NOTES:**
- (1) \circ INDICATES 1/2" PIN MKD LS 4680 SET UNLESS NOTED
 - (2) R - MAP OR DEED RECORD
 - (3) M - MEASURED
 - (4) THE MONUMENT AT 36TH ST & 4TH AVE DOES NOT APPEAR TO RELATE TO THIS SUBDIVISION. THE SOUTHEAST CORNER OF THIS SURVEY WOULD MOVE 0.6'± SOUTH ON LINE IF THIS MONUMENT WERE DETERMINED TO BE THE CENTERLINE OF 36TH ST. WITH A 60' RIGHT OF WAY

RESULTS OF SURVEY

OF LOTS 5 THRU 9 OF BLOCK 20 OF HOME ADDITION NO. 2 AS RECORDED IN BOOK 5 OF MAPS AND PLATS AT PAGE 22 IN THE OFFICE OF THE PIMA COUNTY RECORDER, PIMA COUNTY, ARIZONA.



ROBERT F. MELLEN
 REGISTERED LAND SURVEYOR
 TUCSON, ARIZONA
 DB 88-144