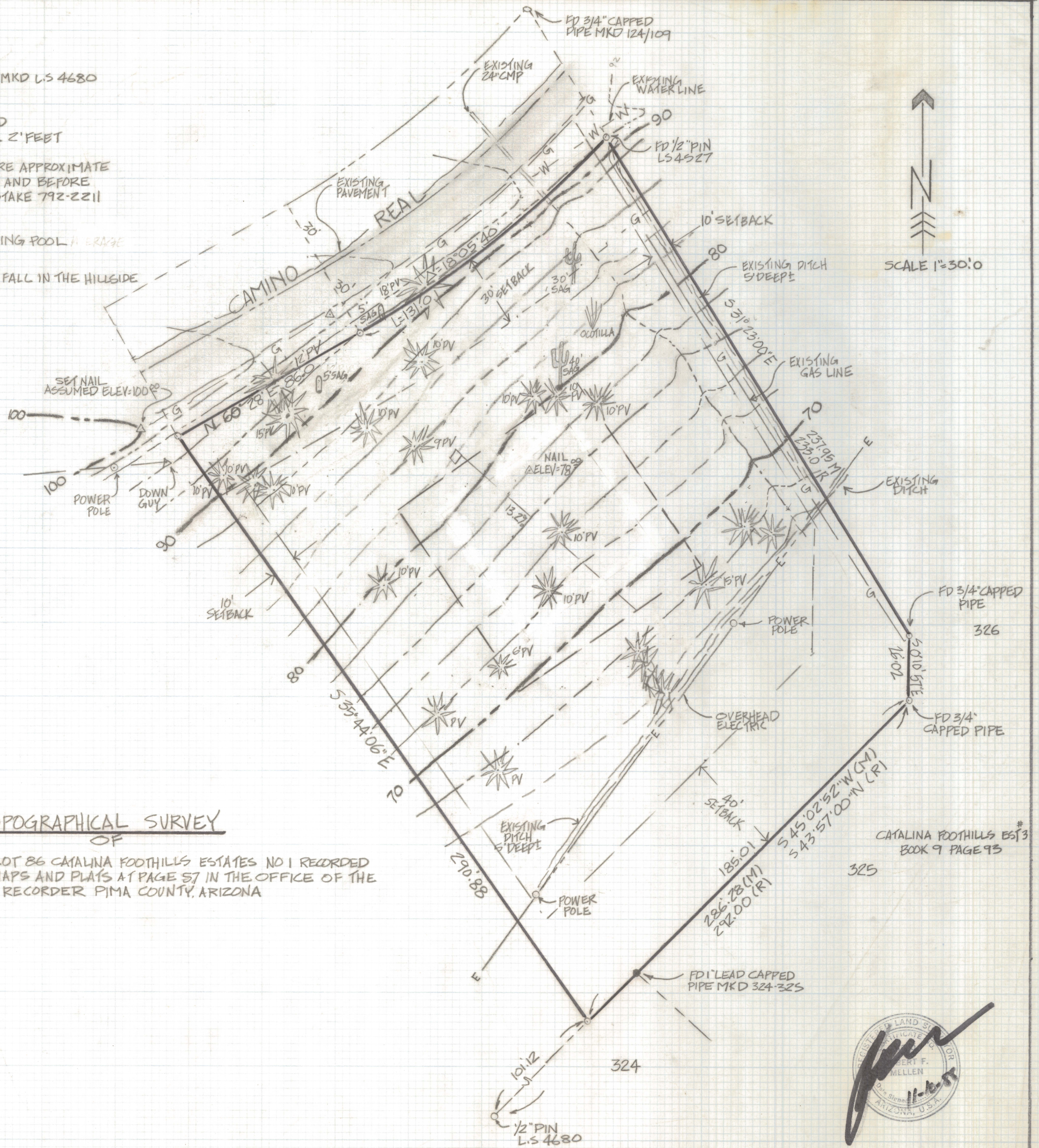


DISCLAIMER:

This unrecorded Record of Survey was donated to the City of Tucson. The City of Tucson provides this data for your personal use "as is." Additionally, the City of Tucson provides this information with the understanding that it is not guaranteed to be accurate, correct or complete and conclusions drawn from such information are the responsibility of the user.

NOTES

- (1) ♀ INDICATES SET 1/2" PIN MKD L.S. 4680 UNLESS NOTED
- (2) M- MEASURED
- (3) R- MAP OR DEED RECORD
- (4) CONTOUR INTERVAL 2' FEET
- (5) SEE JOB# 86-176
- (6) CAUTION!! UTILITIES ARE APPROXIMATE IF DESIGN IS CRITICAL AND BEFORE DIGGING CALL BLUE STAKE 792-2211
- (7) * PV PALM VERDE TREE
- (8) [] BUILDING AREA INCLUDING POOL & TERRACE CROSS SLOPE 13.2%
- (9) THIS PARCEL DOES NOT FALL IN THE HILLSIDE DEVELOPMENT ZONE



TOPOGRAPHICAL SURVEY
OF

A PORTION OF LOT 86 CATALINA FOOTHILLS ESTATES NO 1 RECORDED IN BOOK 6 OF MAPS AND PLATS AT PAGE 57 IN THE OFFICE OF THE PIMA COUNTY RECORDER PIMA COUNTY, ARIZONA

CATALINA FOOTHILLS EST#3
BOOK 9 PAGE 93

325

324



ROBERT F. MELLEN
REGISTERED LAND SURVEYOR
TUCSON, ARIZONA
JOB# 88-148