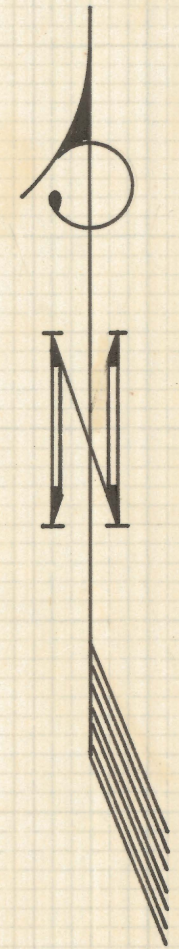
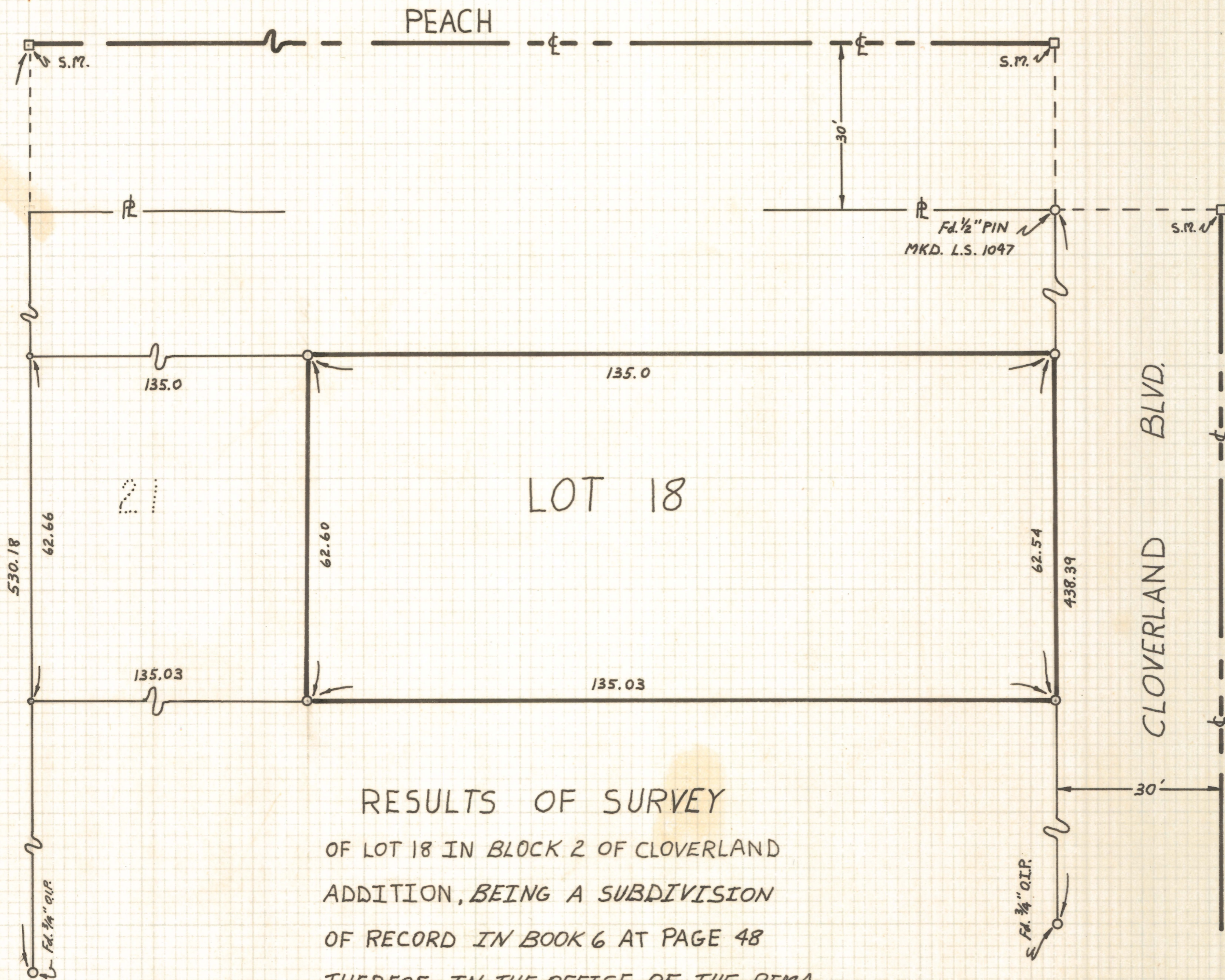


DISCLAIMER:

This unrecorded Record of Survey was donated to the City of Tucson. The City of Tucson provides this data for your personal use "as is." Additionally, the City of Tucson provides this information with the understanding that it is not guaranteed to be accurate, correct or complete and conclusions drawn from such information are the responsibility of the user.

MAGNOLIA BLVD.

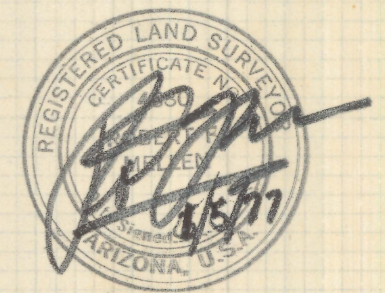


SCALE 1"=20'

NOTES:

- (1) S.M. - SURVEY MONUMENT
- (2) SET 1/2" STEEL PIN MKD. L.S. 4680 AT ALL PROP. CORNS.
- (3) O.I.P. - OPEN IRON PIPE

RESULTS OF SURVEY
 OF LOT 18 IN BLOCK 2 OF CLOVERLAND
 ADDITION, BEING A SUBDIVISION
 OF RECORD IN BOOK 6 AT PAGE 48
 THEREOF, IN THE OFFICE OF THE PIMA
 COUNTY RECORDER, PIMA COUNTY,
 ARIZONA.



ROBERT F. MELLEN
 REGISTERED LAND SURVEYOR
 TUCSON, ARIZONA
 JOB # 77-1
 JAN. 1977

B.K.

Z-2020-848