

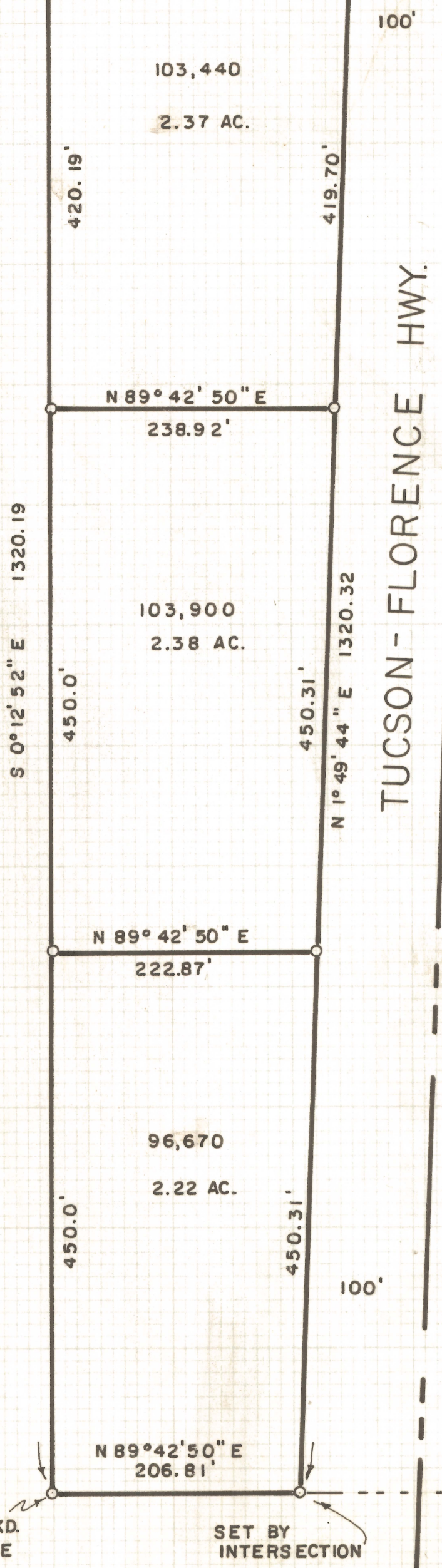
DISCLAIMER:

This unrecorded Record of Survey was donated to the City of Tucson. The City of Tucson provides this data for your personal use "as is." Additionally, the City of Tucson provides this information with the understanding that it is not guaranteed to be accurate, correct or complete and conclusions drawn from such information are the responsibility of the user.

FD. STONE
 FD. 1-1/2" LCP
 4.3' ±
BONANZA HEIGHTS
 BOOK 18 PAGE 83
 M & P
 20' ALLEY
 FD. 1/2" STEEL PIN
 FD. 1/2" STEEL PIN
 S 89° 53' 10" W 253.89'
 FD. 1-1/2" LCP
 RESET
 1" LCP
 SEE NOTE #2

N

SCALE 1" = 100'

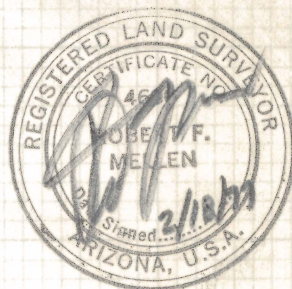


RESULTS OF SURVEY

OF THE SOUTHWEST QUARTER OF THE NORTHWEST QUARTER OF SECTION FOUR, TOWNSHIP ELEVEN SOUTH OF RANGE FOURTEEN EAST, GILA AND SALT RIVER BASE AND MERIDIAN, PIMA COUNTY, ARIZONA, LYING WEST-ERLY OF THE TUCSON - FLORENCE HIGHWAY

NOTES

- (1) INDICATES 1/2" STEEL PIN SET MKD. L.S. 4680 UNLESS NOTED
- (2) RESET NORTHWEST CORNER THIS SURVEY FROM CORNERS OF BONANZA HEIGHTS MKD. ---
- (3) BASIS OF BEARINGS SOUTH LINE OF BONANZA HEIGHTS S 89° 53' 10" W



FD. 2" LCP
 MKD. 1/16 COR.

FD. MKD. STONE
 1/4
 5 4

SET BY INTERSECTION

ROBERT F. MELLEN
 REGISTERED LAND SURVEYOR
 TUCSON, ARIZONA
 JOB # 77-9
 FEBRUARY 1977