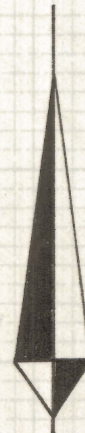


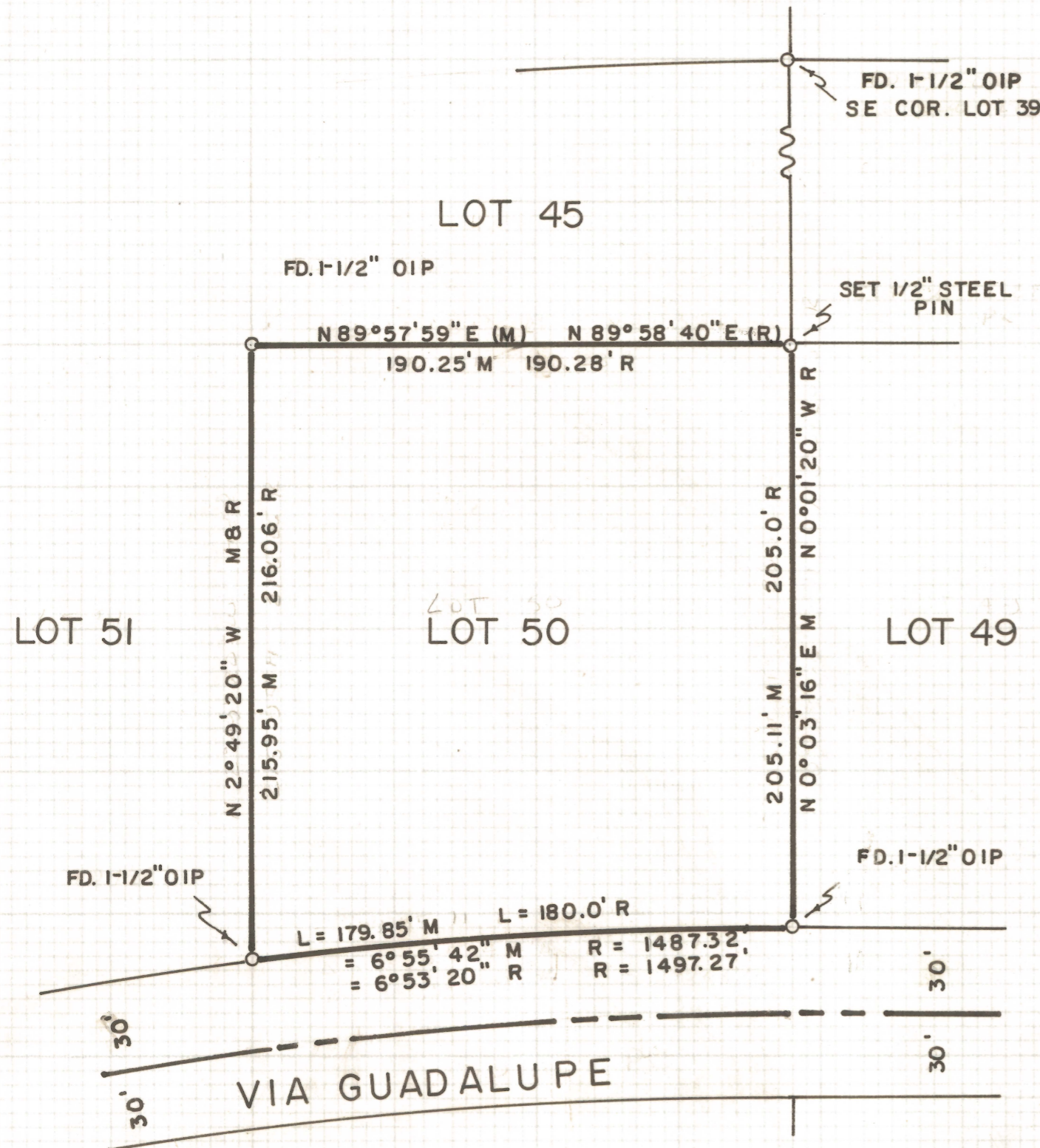
DISCLAIMER:

This unrecorded Record of Survey was donated to the City of Tucson. The City of Tucson provides this data for your personal use "as is." Additionally, the City of Tucson provides this information with the understanding that it is not guaranteed to be accurate, correct or complete and conclusions drawn from such information are the responsibility of the user.

N



SCALE 1" = 50'



RESULTS OF SURVEY

OF LOT FIFTY OF COLONIA SOLANA SUBDIVISION AS RECORDED IN BOOK FIVE AT PAGE THIRTY-TWO OF MAPS AND PLATS IN THE OFFICE OF THE PIMA COUNTY RECORDER, PIMA COUNTY, ARIZONA

NOTES

- (1) M - MEASURED
- (2) R - MAP RECORD
- (3) OIP - OPEN IRON PIPE



ROBERT F. MELLEN
 REGISTERED LAND SURVEYOR
 TUCSON, ARIZONA
 JOB # 77-21
 JANUARY 1977