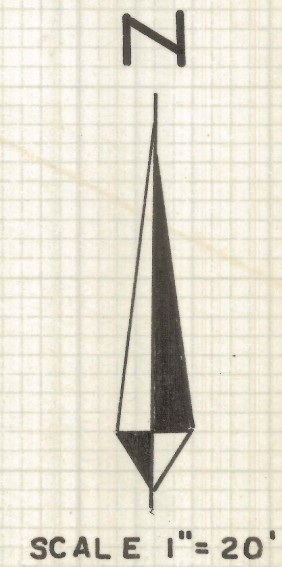
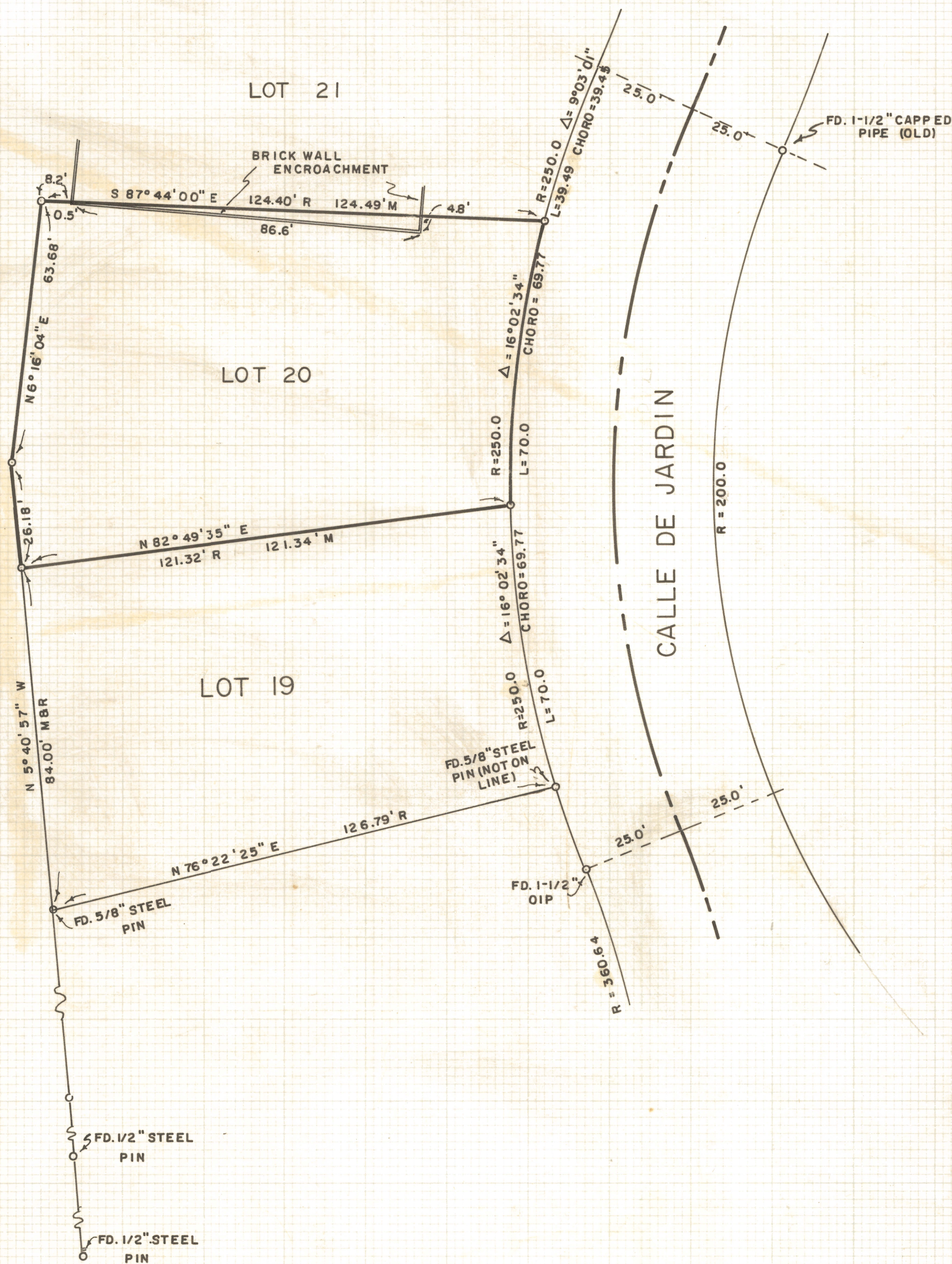


DISCLAIMER:

This unrecorded Record of Survey was donated to the City of Tucson. The City of Tucson provides this data for your personal use "as is." Additionally, the City of Tucson provides this information with the understanding that it is not guaranteed to be accurate, correct or complete and conclusions drawn from such information are the responsibility of the user.



RESULTS OF SURVEY

OF LOT TWENTY, BLOCK THREE OF SAN CLEMENTE
SUBDIVISION AS RECORDED IN BOOK SIX OF MAPS
AND PLATS AT PAGE THIRTY-FIVE IN THE OFFICE
OF THE PIMA COUNTY RECORDER, PIMA COUNTY,
ARIZONA

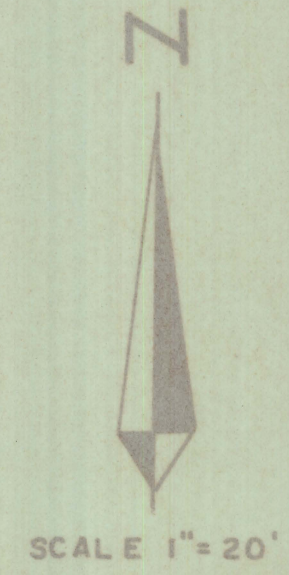
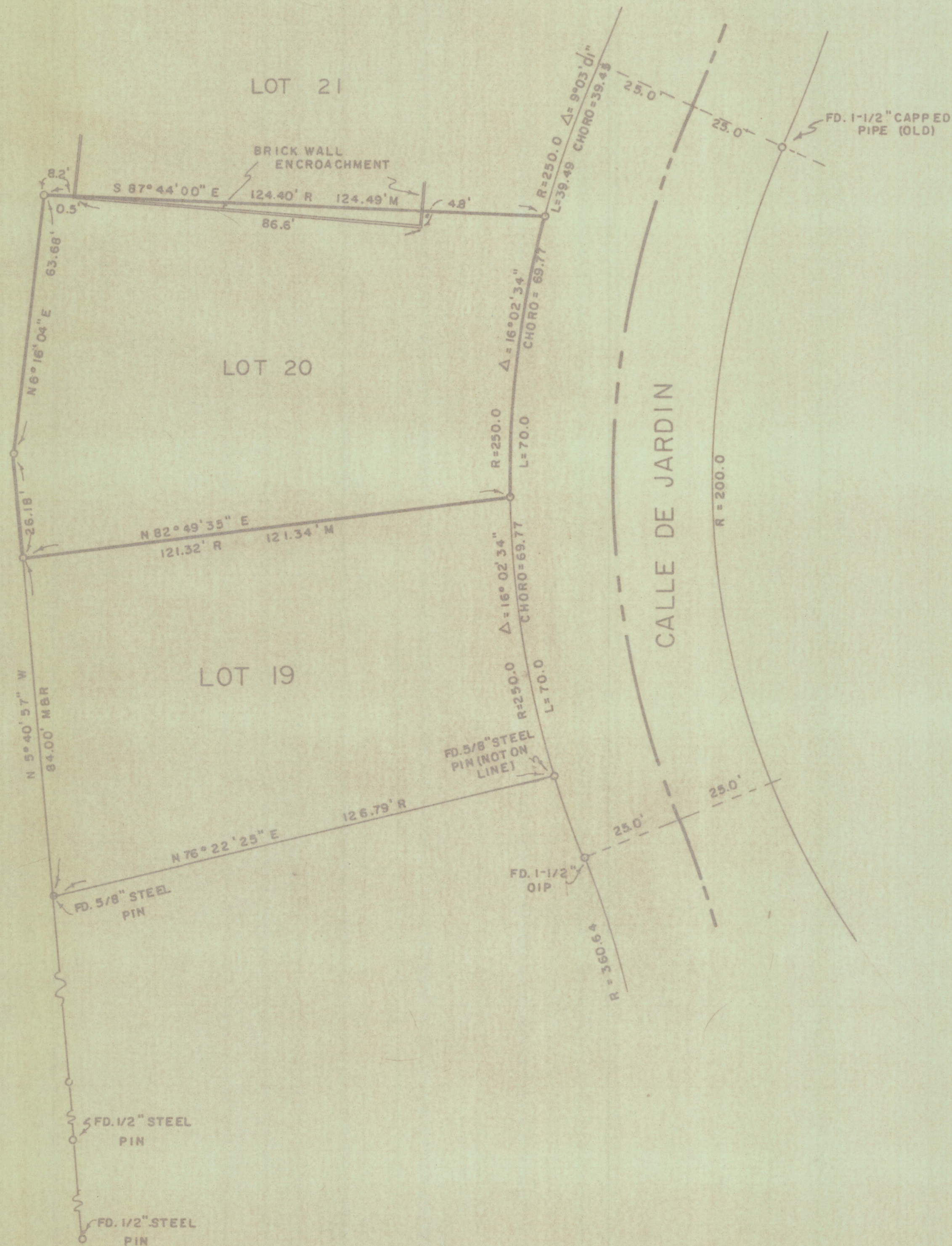
NOTES

- (1) INDICATES 1/2" STEEL PIN SET
MARKED L.S. 4680 UNLESS NOTED
- (2) R - MAP RECORD
- (3) M - MEASURED
- (4) OIP - OPEN IRON PIPE



ROBERT F. MELLEN
REGISTERED LAND SURVEYOR
TUCSON, ARIZONA
JOB # 77-25
FEBRUARY 1977

Z-2020-858-001



RESULTS OF SURVEY

OF LOT TWENTY, BLOCK THREE OF SAN CLEMENTE SUBDIVISION AS RECORDED IN BOOK SIX OF MAPS AND PLATS AT PAGE THIRTY-FIVE IN THE OFFICE OF THE PIMA COUNTY RECORDER, PIMA COUNTY, ARIZONA

NOTES

- (1) INDICATES 1/2" STEEL PIN SET MARKED L.S. 4680 UNLESS NOTED
- (2) R - MAP RECORD
- (3) M - MEASURED
- (4) OIP - OPEN IRON PIPE



ROBERT F. MELLEN
REGISTERED LAND SURVEYOR
TUCSON, ARIZONA
JOB # 77-25
FEBRUARY 1977

Z-2020-858-002