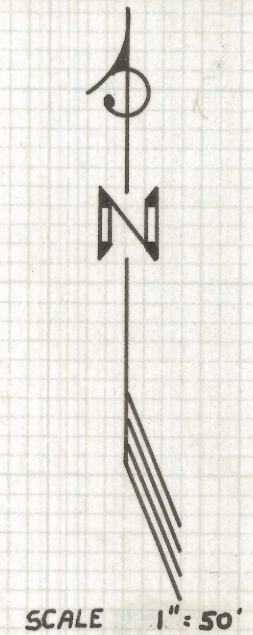
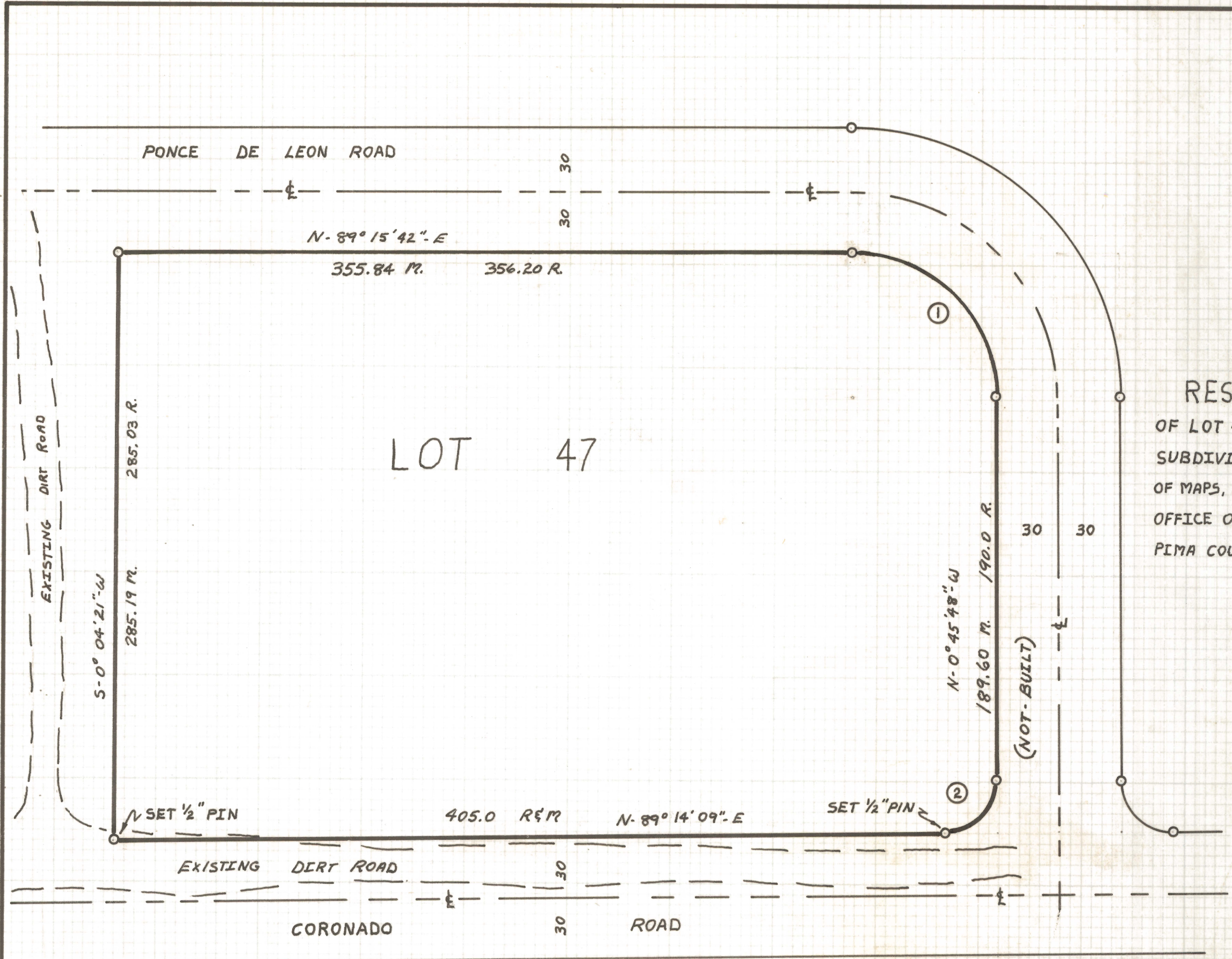


DISCLAIMER:

This unrecorded Record of Survey was donated to the City of Tucson. The City of Tucson provides this data for your personal use "as is." Additionally, the City of Tucson provides this information with the understanding that it is not guaranteed to be accurate, correct or complete and conclusions drawn from such information are the responsibility of the user.



RESULTS OF SURVEY
 OF LOT 47 IN MILAGROSA HILLS, A
 SUBDIVISION RECORDED IN BOOK 16
 OF MAPS, AT PAGE 59 THEREOF, IN THE
 OFFICE OF THE PIMA COUNTY RECORDER,
 PIMA COUNTY, ARIZONA.



CURVE		DATA		
NO.	DELTA	RADIUS	S. TAN.	LENGTH
1	89°58'30"	69.98	69.98	109.89
2	90°00'00"	25.00	25.00	39.27

- NOTES:
- (1) O — INDICATES Fd. 1/2" STEEL PIN UNLESS OTHERWISE NOTED.
 - (2) M: MEASURED DIST.
 - (3) R: RECORD DIST.

ROBERT F. MELLEN
 REGISTERED LAND SURVEYOR
 TUCSON, ARIZONA
 JOB #77-38
 FEB. 1977

B.K.

Z-2020-862