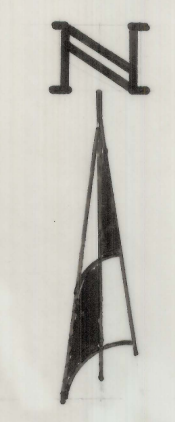


# **DISCLAIMER:**

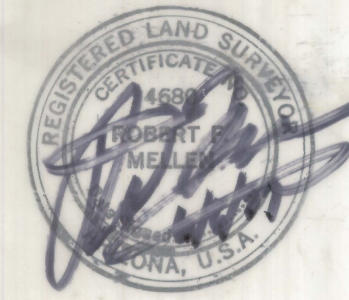
**This unrecorded Record of Survey was donated to the City of Tucson. The City of Tucson provides this data for your personal use "as is." Additionally, the City of Tucson provides this information with the understanding that it is not guaranteed to be accurate, correct or complete and conclusions drawn from such information are the responsibility of the user.**




SCALE 1" = 500'

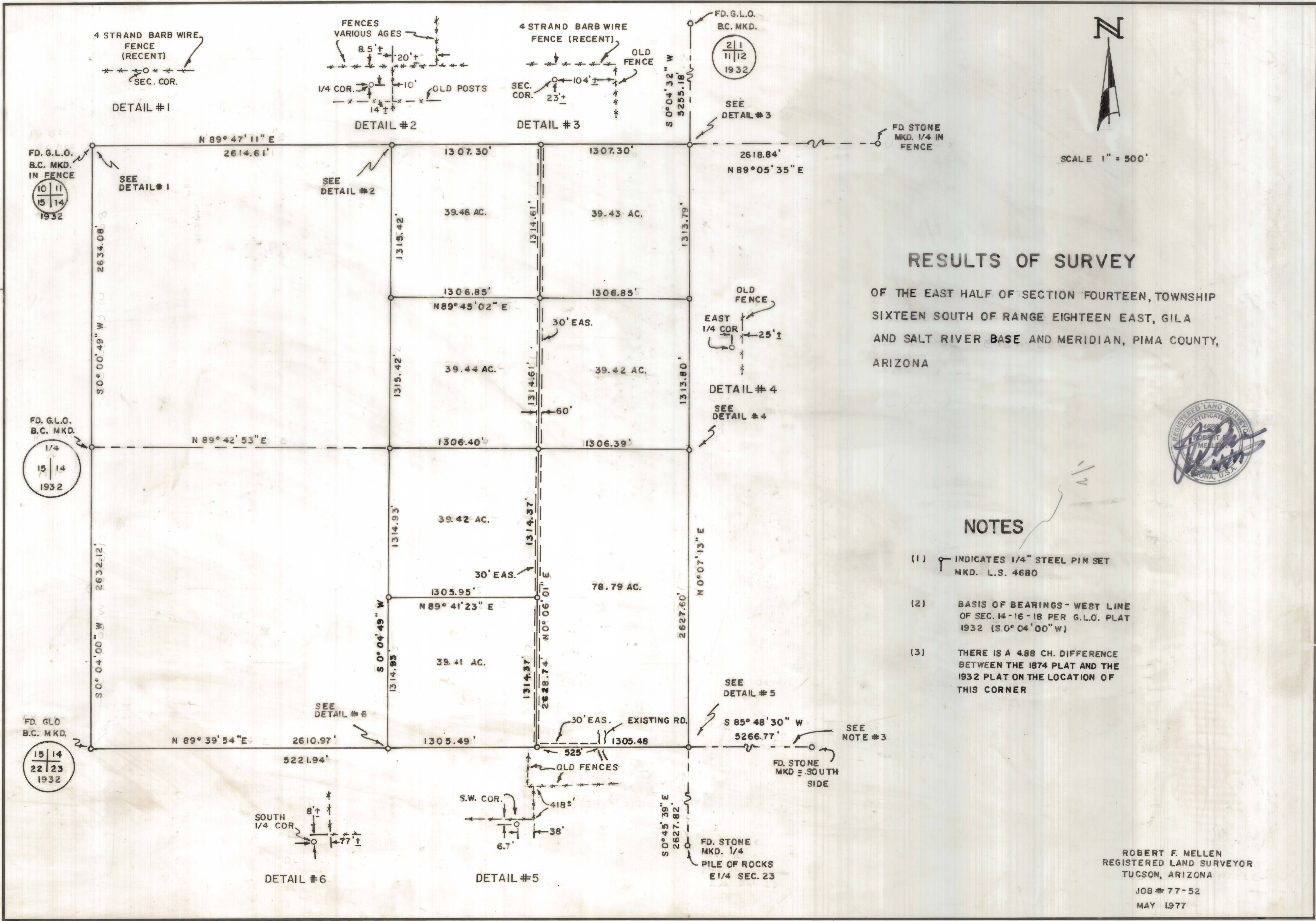
### RESULTS OF SURVEY

OF THE EAST HALF OF SECTION FOURTEEN, TOWNSHIP SIXTEEN SOUTH OF RANGE EIGHTEEN EAST, GILA AND SALT RIVER BASE AND MERIDIAN, PIMA COUNTY, ARIZONA



### NOTES

- (1)  INDICATES 1/4" STEEL PIN SET MKD. L.S. 4680
- (2) BASIS OF BEARINGS - WEST LINE OF SEC. 14 - 16 - 18 PER G.L.O. PLAT 1932 (S 0° 04' 00" W)
- (3) THERE IS A 4.88 CH. DIFFERENCE BETWEEN THE 1874 PLAT AND THE 1932 PLAT ON THE LOCATION OF THIS CORNER



ROBERT F. MELLEN  
 REGISTERED LAND SURVEYOR  
 TUCSON, ARIZONA  
 JOB # 77-52  
 MAY 1977