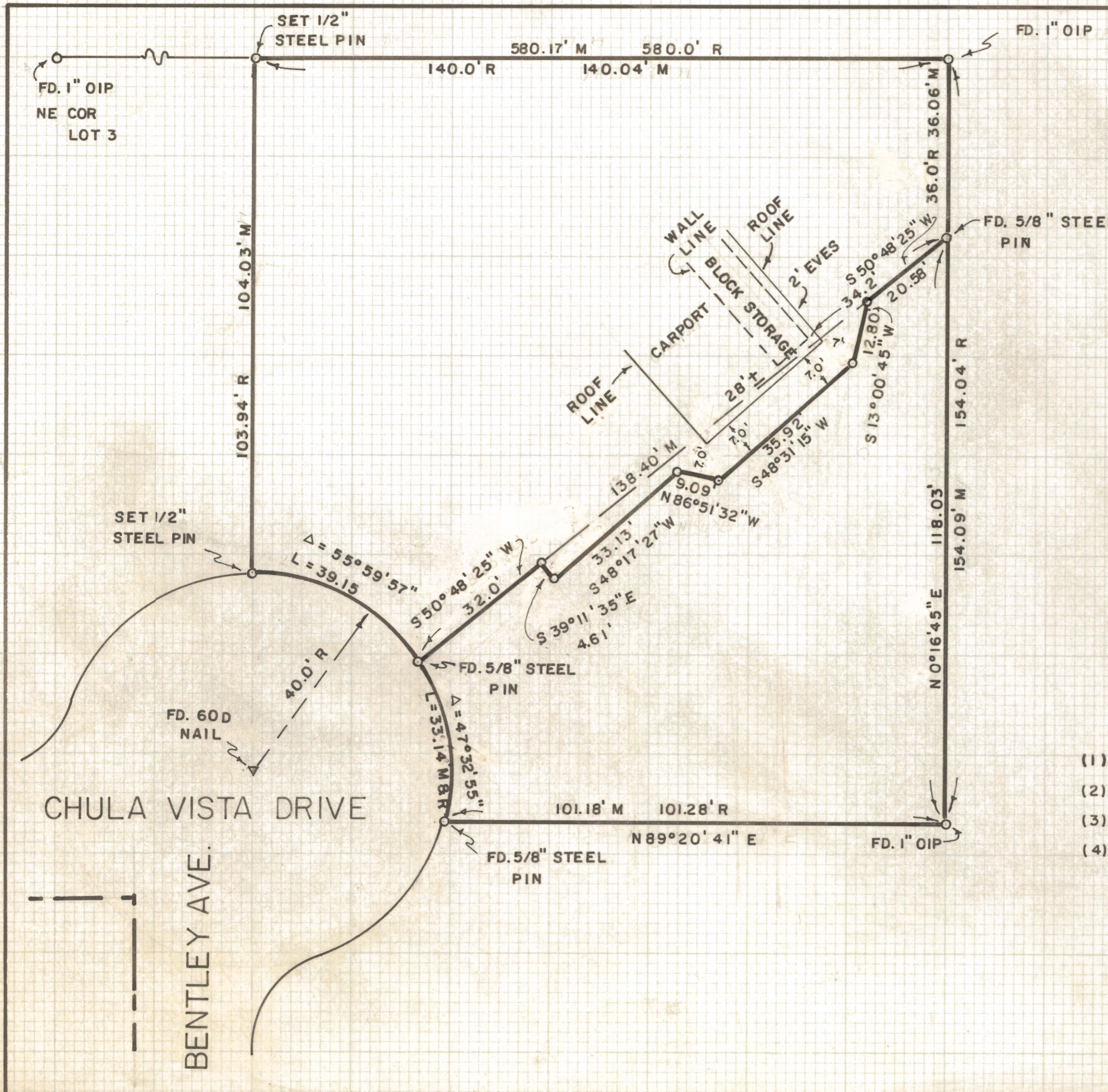


# **DISCLAIMER:**

**This unrecorded Record of Survey was donated to the City of Tucson. The City of Tucson provides this data for your personal use "as is." Additionally, the City of Tucson provides this information with the understanding that it is not guaranteed to be accurate, correct or complete and conclusions drawn from such information are the responsibility of the user.**



SCALE 1" = 20'

### RESULTS OF SURVEY

OF LOT SEVEN, CHULA VISTA ADDITION AS RECORDED IN BOOK SEVEN OF MAPS AND PLATS AT PAGE SIXTY-FOUR IN THE OFFICE OF THE PIMA COUNTY RECORDER, PIMA COUNTY, ARIZONA

### NOTES

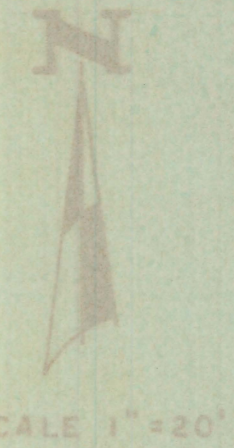
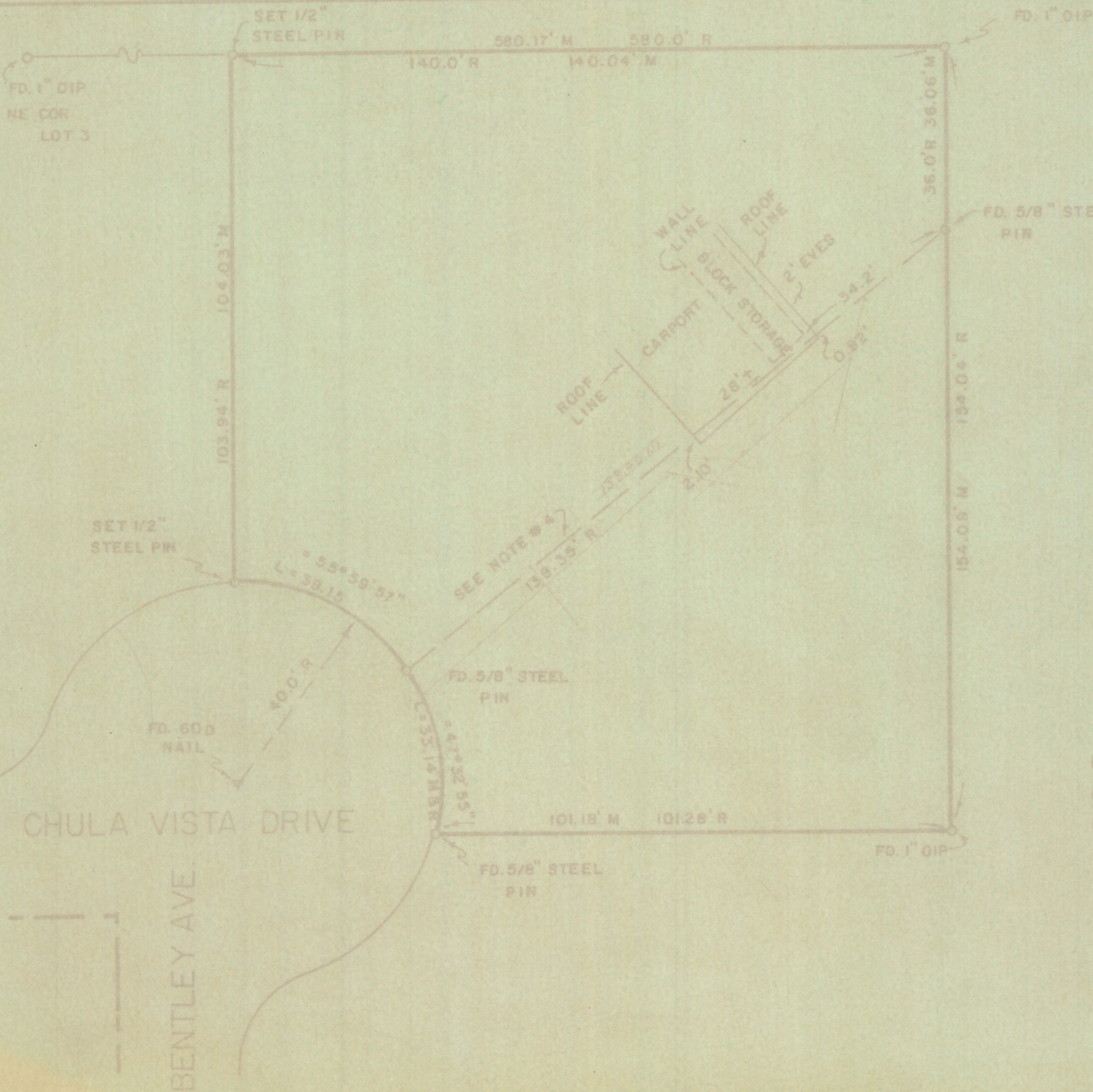
- (1) M - MEASURED
- (2) R - MAP RECORD
- (3) OIP - OPEN IRON PIPE
- (4) INDICATES 1/2" STEEL PIN SET UNLESS NOTED



REVISED 4/14/77  
 REVISED 6/27/77

ROBERT F. MELLEN  
 REGISTERED LAND SURVEYOR  
 TUCSON, ARIZONA  
 JOB #77-67  
 APRIL 1977

Z-2020-873-001



### RESULTS OF SURVEY

OF LOT SEVEN, CHULA VISTA ADDITION AS RECORDED IN BOOK SEVEN OF MAPS AND PLATS AT PAGE SIXTY-FOUR IN THE OFFICE OF THE PIMA COUNTY RECORDER, PIMA COUNTY, ARIZONA

### NOTES

- (1) M - MEASURED
- (2) R - MAP RECORD
- (3) OIP - OPEN IRON PIPE
- (4) LINE DESCRIBED BY DEED FURNISHED BY OWNER



**Z-2020-873-002**

ROBERT F. MELLEN  
REGISTERED LAND SURVEYOR  
TUCSON, ARIZONA  
JOB # 77-67  
APRIL 1977

VOID SEE REVISED *R*