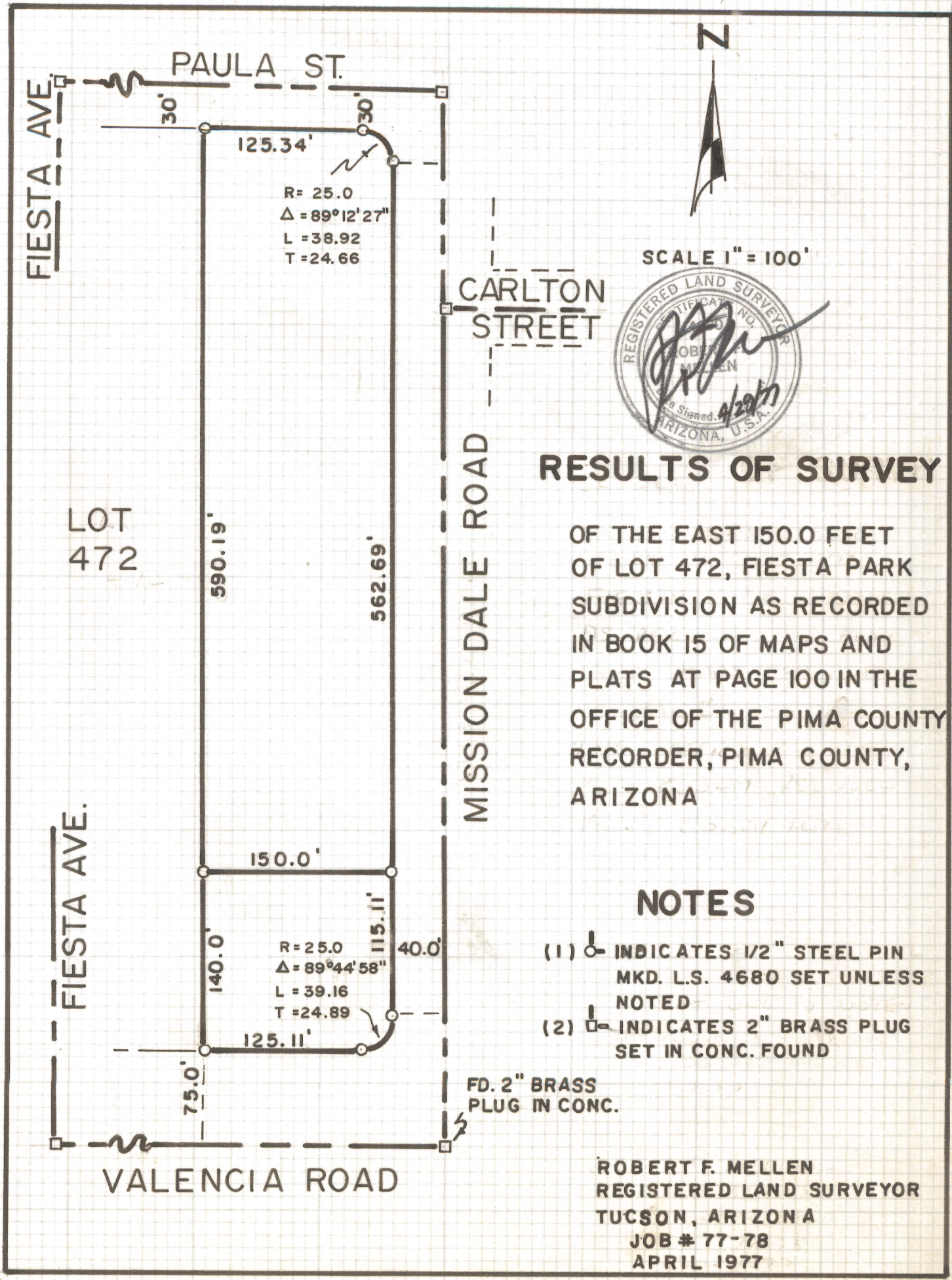


DISCLAIMER:

This unrecorded Record of Survey was donated to the City of Tucson. The City of Tucson provides this data for your personal use "as is." Additionally, the City of Tucson provides this information with the understanding that it is not guaranteed to be accurate, correct or complete and conclusions drawn from such information are the responsibility of the user.



RESULTS OF SURVEY

OF THE EAST 150.0 FEET OF LOT 472, FIESTA PARK SUBDIVISION AS RECORDED IN BOOK 15 OF MAPS AND PLATS AT PAGE 100 IN THE OFFICE OF THE PIMA COUNTY RECORDER, PIMA COUNTY, ARIZONA

NOTES

- (1) INDICATES 1/2" STEEL PIN MKD. L.S. 4680 SET UNLESS NOTED
- (2) INDICATES 2" BRASS PLUG SET IN CONC. FOUND

ROBERT F. MELLEN
 REGISTERED LAND SURVEYOR
 TUCSON, ARIZONA
 JOB # 77-78
 APRIL 1977