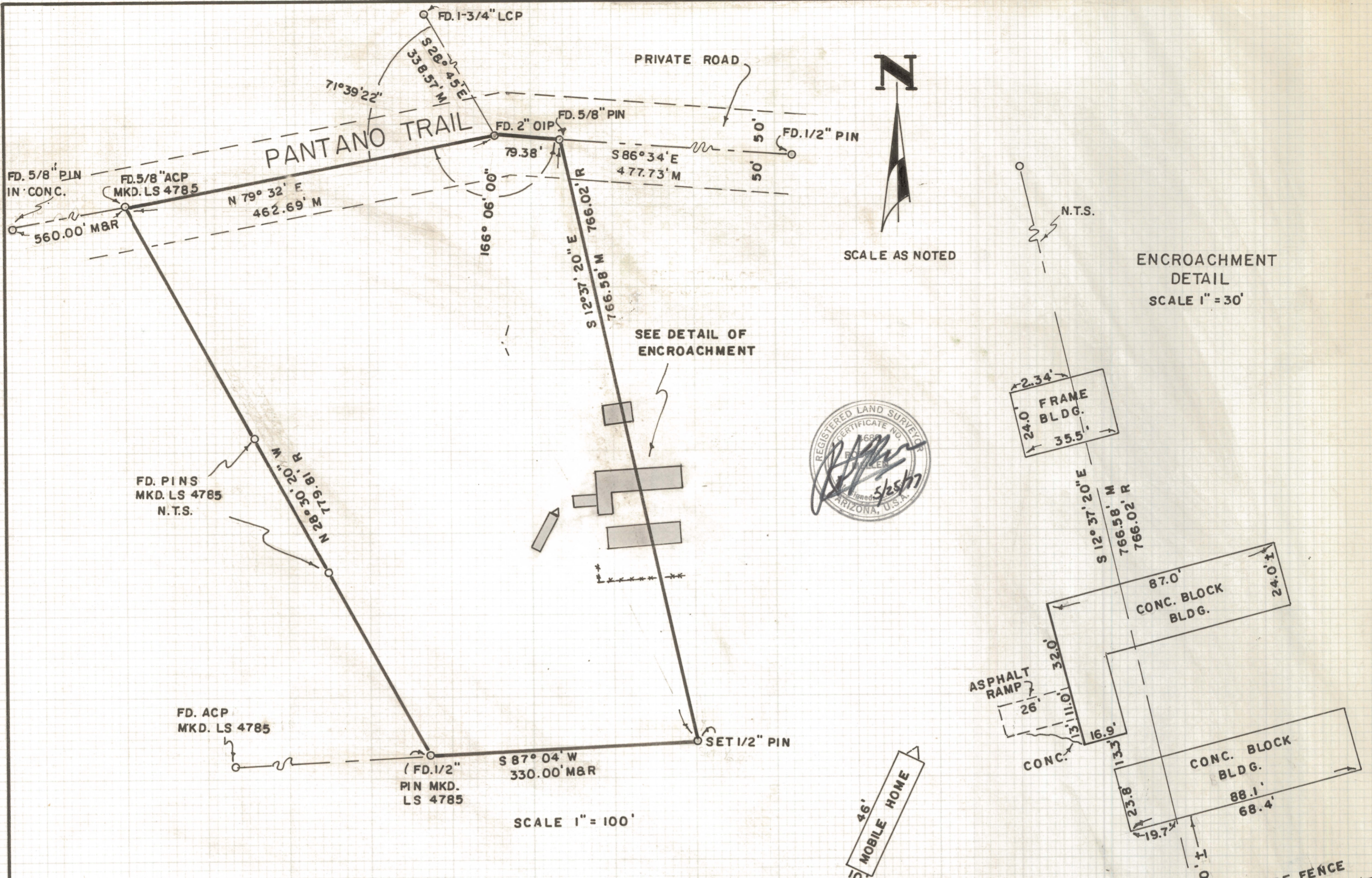


DISCLAIMER:

This unrecorded Record of Survey was donated to the City of Tucson. The City of Tucson provides this data for your personal use "as is." Additionally, the City of Tucson provides this information with the understanding that it is not guaranteed to be accurate, correct or complete and conclusions drawn from such information are the responsibility of the user.



RESULTS OF SURVEY

OF A PORTION OF LOT SEVEN OF RINCON RANCH ESTATES NO. ONE AS RECORDED IN BOOK EIGHT OF MAPS AND PLATS AT PAGE EIGHT IN THE OFFICE OF THE PIMA COUNTY RECORDER, PIMA COUNTY, ARIZONA

NOTES

- (1) N.T.S. - NOT TO SCALE
- (2) A.C.P. - ALUMINUM CAP PIN
- (3) L.C.P. - LEAD CAP PIPE
- (4) O.I.P. - OPEN IRON PIPE
- (5) SURVEY PER DOC. 3275 PAGE 541 FURNISHED BY OWNER
- (6) BLDG. LOCATED BY STADIA TRANSIT METHODS APPROXIMATE ONLY

ROBERT F. MELLEN
 REGISTERED LAND SURVEYOR
 TUCSON, ARIZONA
 JOB # 77-81
 MAY 1977