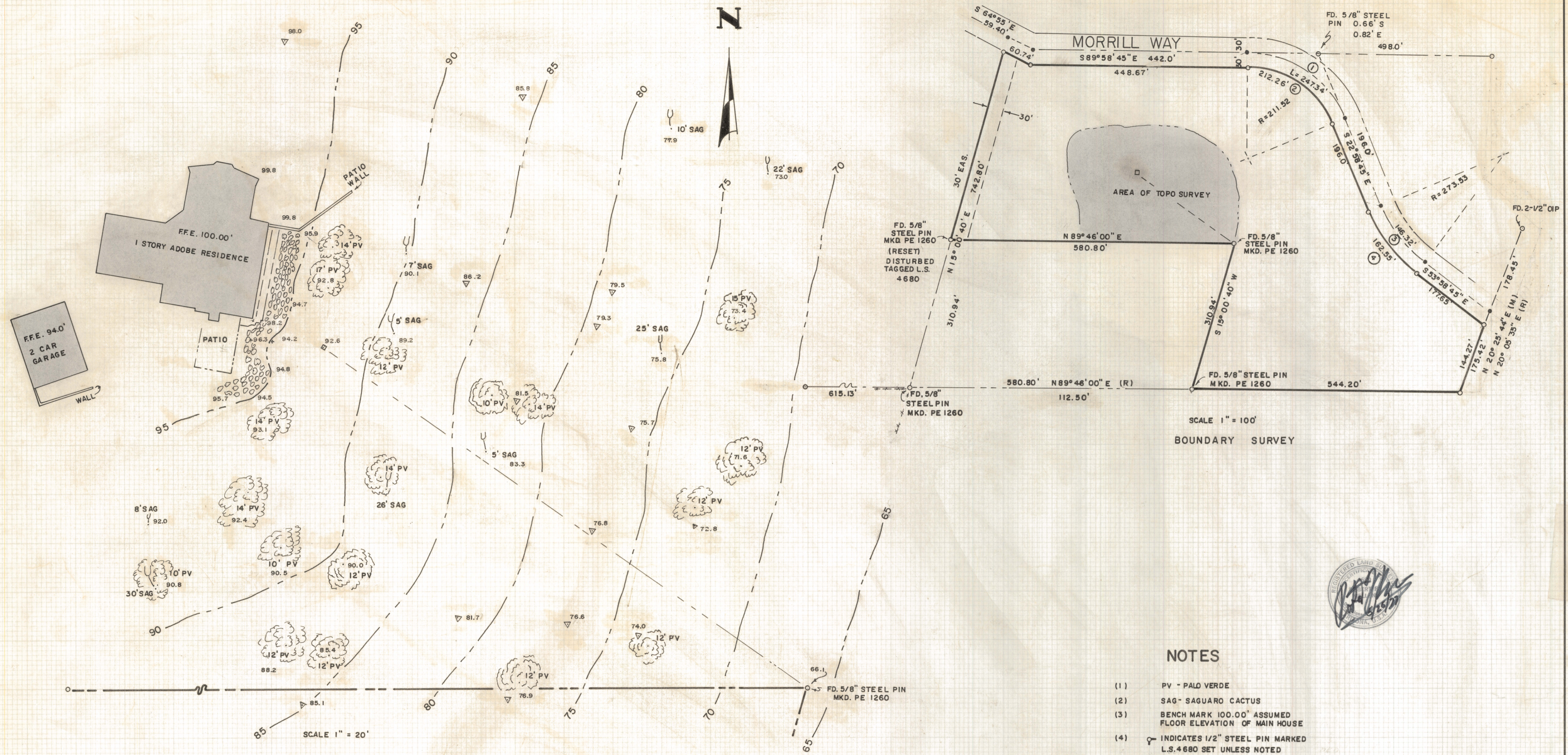


DISCLAIMER:

This unrecorded Record of Survey was donated to the City of Tucson. The City of Tucson provides this data for your personal use "as is." Additionally, the City of Tucson provides this information with the understanding that it is not guaranteed to be accurate, correct or complete and conclusions drawn from such information are the responsibility of the user.

SCALES AS NOTED



- NOTES**
- (1) PV - PALO VERDE
 - (2) SAG - SAGUARO CACTUS
 - (3) BENCH MARK 100.00' ASSUMED FLOOR ELEVATION OF MAIN HOUSE
 - (4) INDICATES 1/2" STEEL PIN MARKED L.S. 4680 SET UNLESS NOTED
 - (5) INDICATES SPOT ELEVATION
 - (6) M - MEASURED
 - (7) R - RECORD



RESULTS OF TOPOGRAPHICAL SURVEY

OF A PORTION OF THE NORTHWEST QUARTER OF SECTION THIRTY-FIVE, TOWNSHIP THIRTEEN SOUTH OF RANGE FIFTEEN, GILA AND SALT RIVER BASE AND MERIDIAN, PIMA COUNTY, ARIZONA

CURVE DATA					
NO.	RADIUS	DELTA	LENGTH	TAN.	CHORD
1	211.52	67° 00' 00"	247.34	140.0	233.48
2	181.52	67° 00' 00"	212.26	120.15	200.38
3	270.44	31° 00' 00"	146.32	75.0	144.54
4	300.44	31° 00' 00"	162.55	83.32	160.58

ROBERT F. MELLEN
 REGISTERED LAND SURVEYOR
 TUCSON, ARIZONA
 JOB # 77-84
 MAY 1977