

# **DISCLAIMER:**

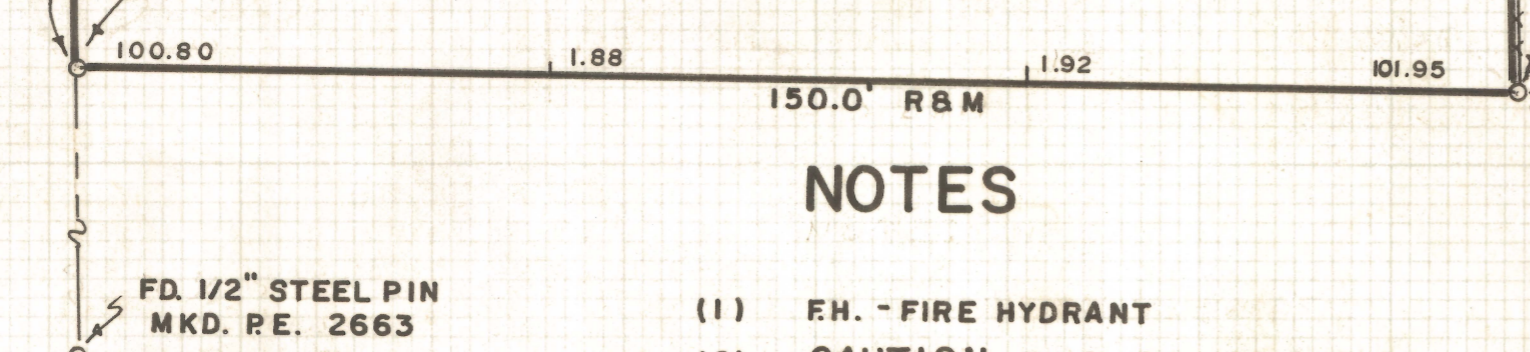
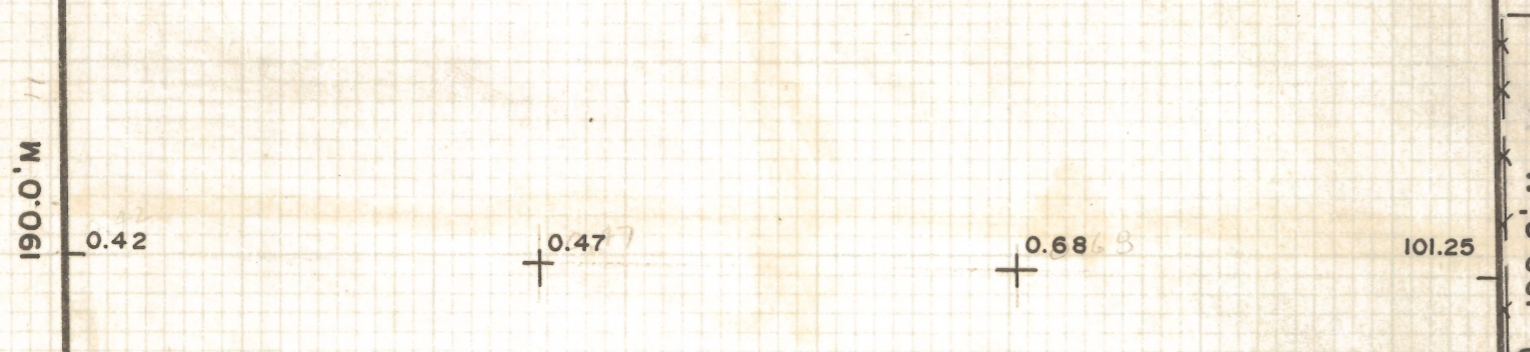
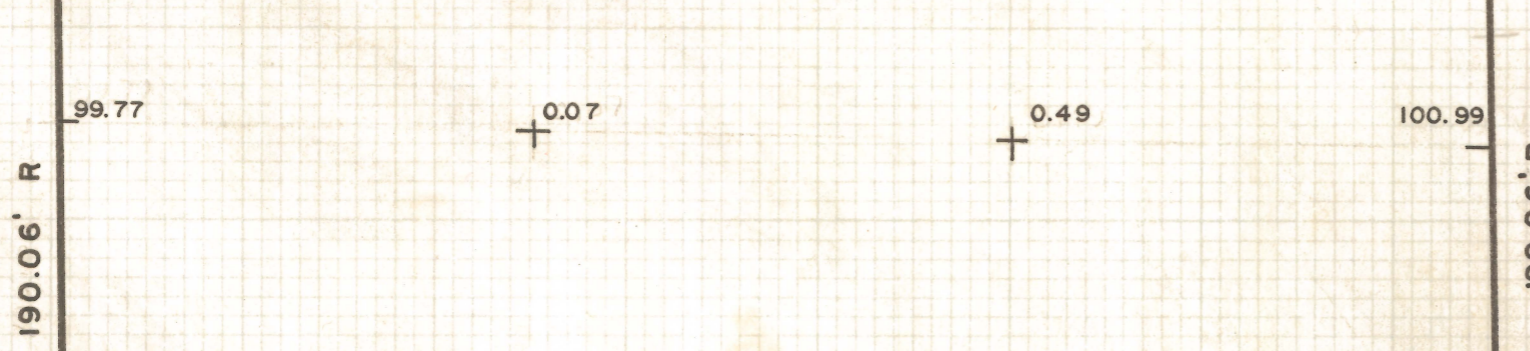
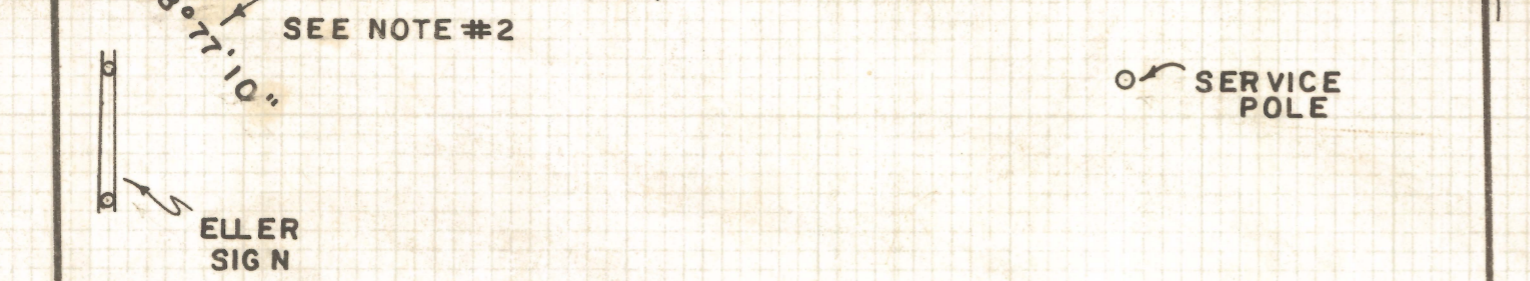
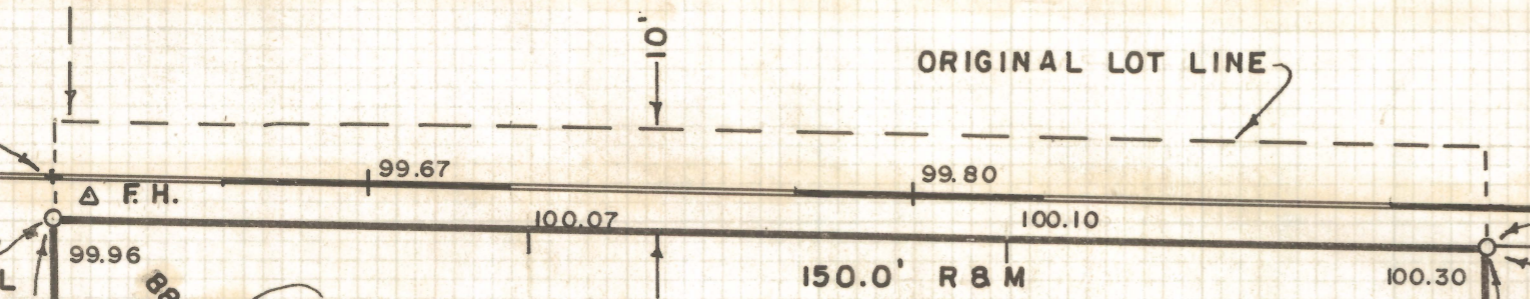
**This unrecorded Record of Survey was donated to the City of Tucson. The City of Tucson provides this data for your personal use "as is." Additionally, the City of Tucson provides this information with the understanding that it is not guaranteed to be accurate, correct or complete and conclusions drawn from such information are the responsibility of the user.**

EAST SPEEDWAY



B.M. CROSS  
ON CURB  
ELEV. 100.0

FD. 1/2" STEEL  
PIN MKD.  
P.E. 2663



SEE JOB # 75-6

NOTES

- (1) F.H. - FIRE HYDRANT
- (2) **CAUTION** THIS LOT HAS ANGLES CONSIDERABLY GREATER OR LESS THAN 90° - SEE N.W. CORNER
- (3) INDICATES 1/2" STEEL PIN SET MKD. L.S. 4680 UNLESS NOTED

SCALE 1" = 20'



RESULTS OF SURVEY

OF THE SOUTH 190.0 FEET OF THE NORTH 200.0 FEET OF LOT 5, WILMOT DESERT ESTATES RECORDED IN BOOK 7 OF MAPS AND PLATS AT PAGE 80 (EXCEPT THE EAST 159.85 FEET THEREOF) AS RECORDED IN THE OFFICE OF THE PIMA COUNTY RECORDER, PIMA COUNTY, ARIZONA

ROBERT F. MELLEN  
REGISTERED LAND SURVEYOR  
TUCSON, ARIZONA

JOB # 77-87  
MAY 1977

Z-2020-882