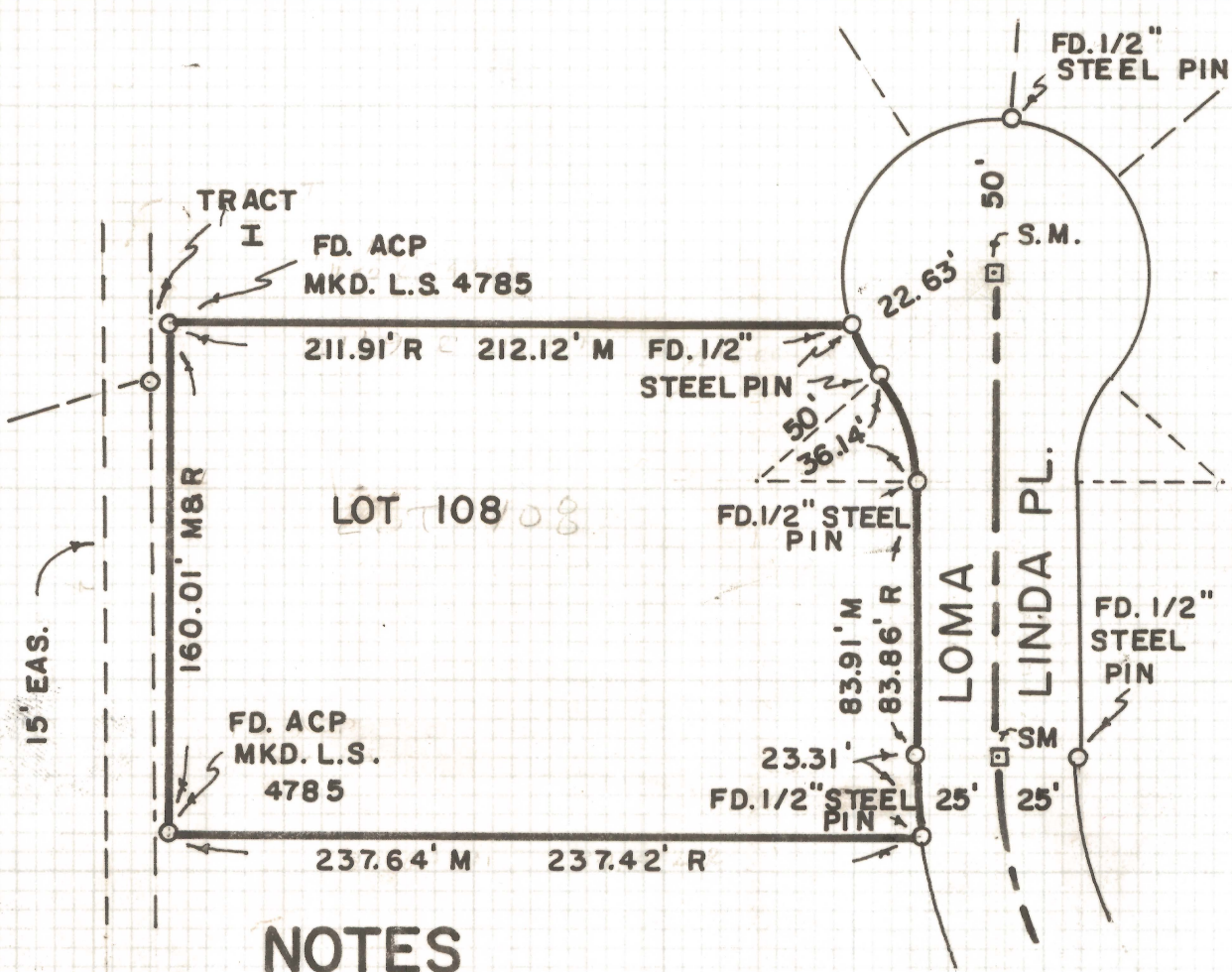


DISCLAIMER:


This unrecorded Record of Survey was donated to the City of Tucson. The City of Tucson provides this data for your personal use "as is." Additionally, the City of Tucson provides this information with the understanding that it is not guaranteed to be accurate, correct or complete and conclusions drawn from such information are the responsibility of the user.



RESULTS OF SURVEY

OF LOT 108, TRES LOMAS
SUBDIVISION AS RECORDED
IN BOOK 25 OF MAPS AND
PLATS AT PAGE 23, PIMA
COUNTY, ARIZONA

NOTES

- (1) R - MAP RECORD
- (2) M - MEASURED
- (3)  INDICATES 1/2" STEEL PIN SET MKD. L.S. 4680 UNLESS NOTED
- (4) ACP - ALUMINUM CAP PIN



ROBERT F. MELLEN
REGISTERED LAND SURVEYOR
TUCSON, ARIZONA

JOB # 77-101

Z-2020-885