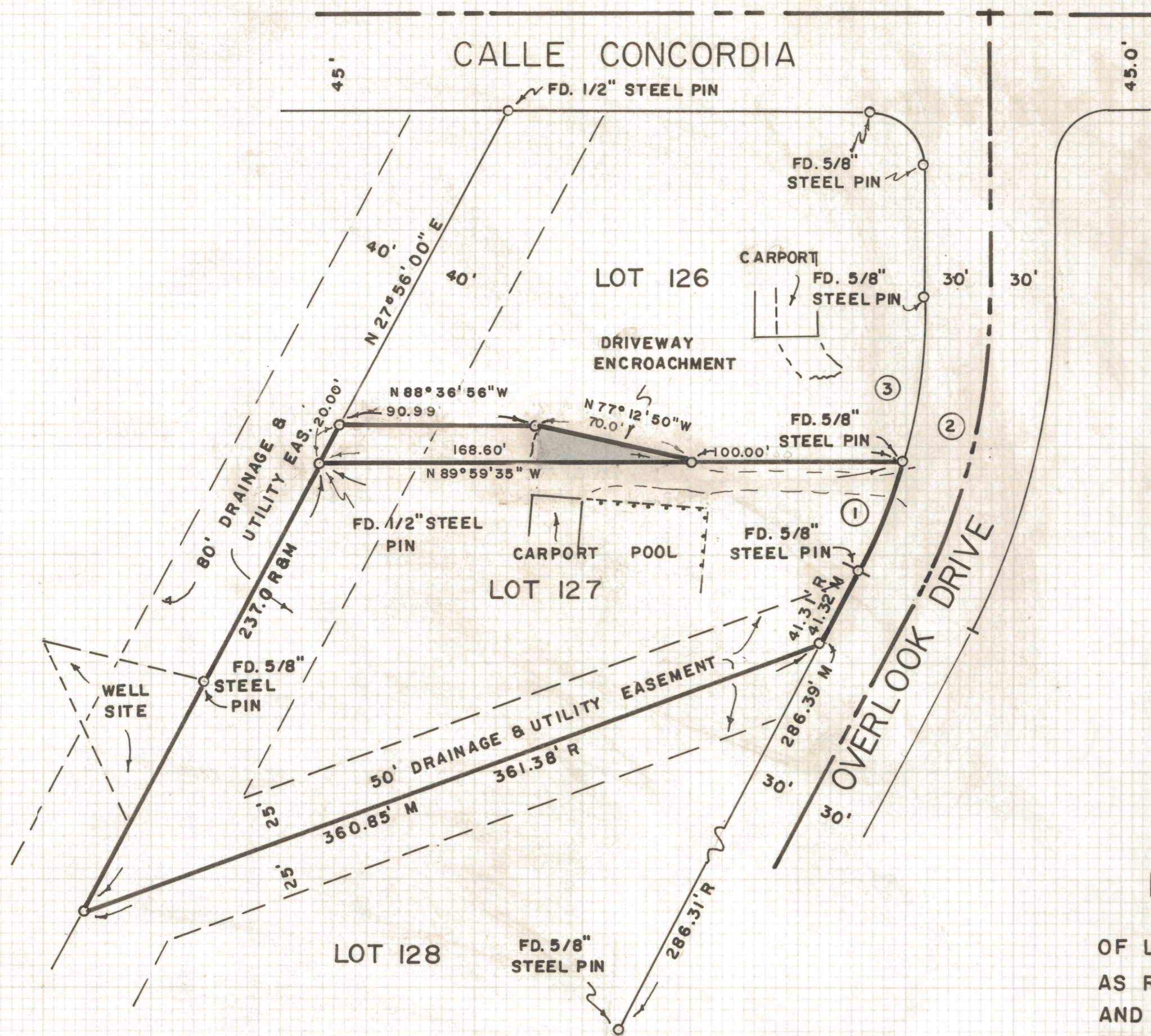


DISCLAIMER:

This unrecorded Record of Survey was donated to the City of Tucson. The City of Tucson provides this data for your personal use "as is." Additionally, the City of Tucson provides this information with the understanding that it is not guaranteed to be accurate, correct or complete and conclusions drawn from such information are the responsibility of the user.



SCALE 1" = 50'

RESULTS OF SURVEY

OF LOT 128 OF SHADOW MOUNTAIN ESTATES AS RECORDED IN BOOK THIRTEEN OF MAPS AND PLATS AT PAGE SEVENTY-FIVE IN THE OFFICE OF THE PIMA COUNTY RECORDER, PIMA COUNTY, ARIZONA

NOTES

- (1) M - MEASURED
- (2) R - MAP RECORD
- (3) INDICATES 1/2" STEEL PIN MKD. L.S. 4680 SET UNLESS NOTED
- (4) 4 INDICATES CURVE - SEE CURVE DATA



CURVE DATA				
NO.	RADIUS	DELTA	TANGENT	LENGTH
1	270.00	11° 29' 13"	27.16	54.13
2	300.00	27° 55' 35"	74.59	146.22
3	270.00	16° 26' 22"	39.00	77.47

REVISED 6/24/77 NEW LEGAL

ROBERT F. MELLEN
REGISTERED LAND SURVEYOR
TUCSON, ARIZONA
JOB # 77-102

Z-2020-886