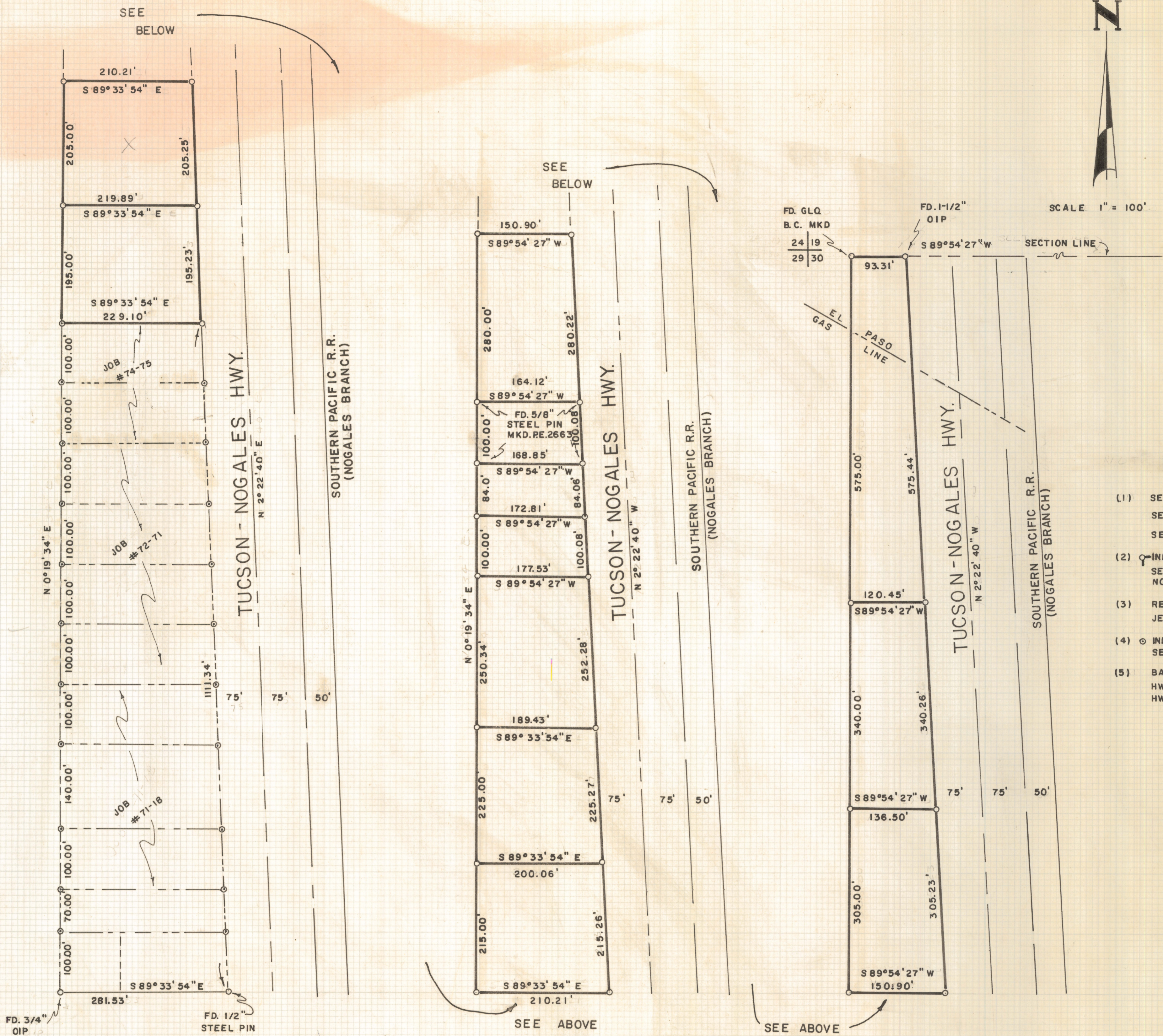


DISCLAIMER:

This unrecorded Record of Survey was donated to the City of Tucson. The City of Tucson provides this data for your personal use "as is." Additionally, the City of Tucson provides this information with the understanding that it is not guaranteed to be accurate, correct or complete and conclusions drawn from such information are the responsibility of the user.



NOTES

- (1) SEE JOB # 71-18
SEE JOB # 72-71
SEE JOB # 74-75
- (2) ⊙ INDICATES 1/2" STEEL PIN
SET MKD. L.S. 4680 UNLESS
NOTED
- (3) REFERENCE SURVEY BY E.H.
JENKINS (1961)
- (4) ⊙ INDICATES 1" OPEN IRON PIPE
SEE PREVIOUS JOBS
- (5) BASIS OF BEARINGS - ARIZONA
HWY. DEPT. TUCSON NOGALES
HWY. N 2°22'40" W

RESULTS OF SURVEY

AND DIVISION OF LOTS ONE, TWO, AND THREE OF SECTION THIRTY,
TOWNSHIP FIFTEEN SOUTH OF RANGE FOURTEEN, GILA AND SALT RIVER
BASE AND MERIDIAN, PIMA COUNTY, ARIZONA (LYING WEST OF THE OF
THE TUCSON-NOGALES HIGHWAY AS IT EXISTED ON MARCH 1960)



ROBERT F. MELLEN
REGISTERED LAND SURVEYOR
TUCSON, ARIZONA
JOB # 77-106
JUNE 1977

Z-2020-888