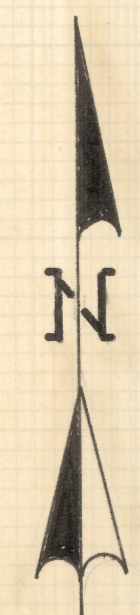
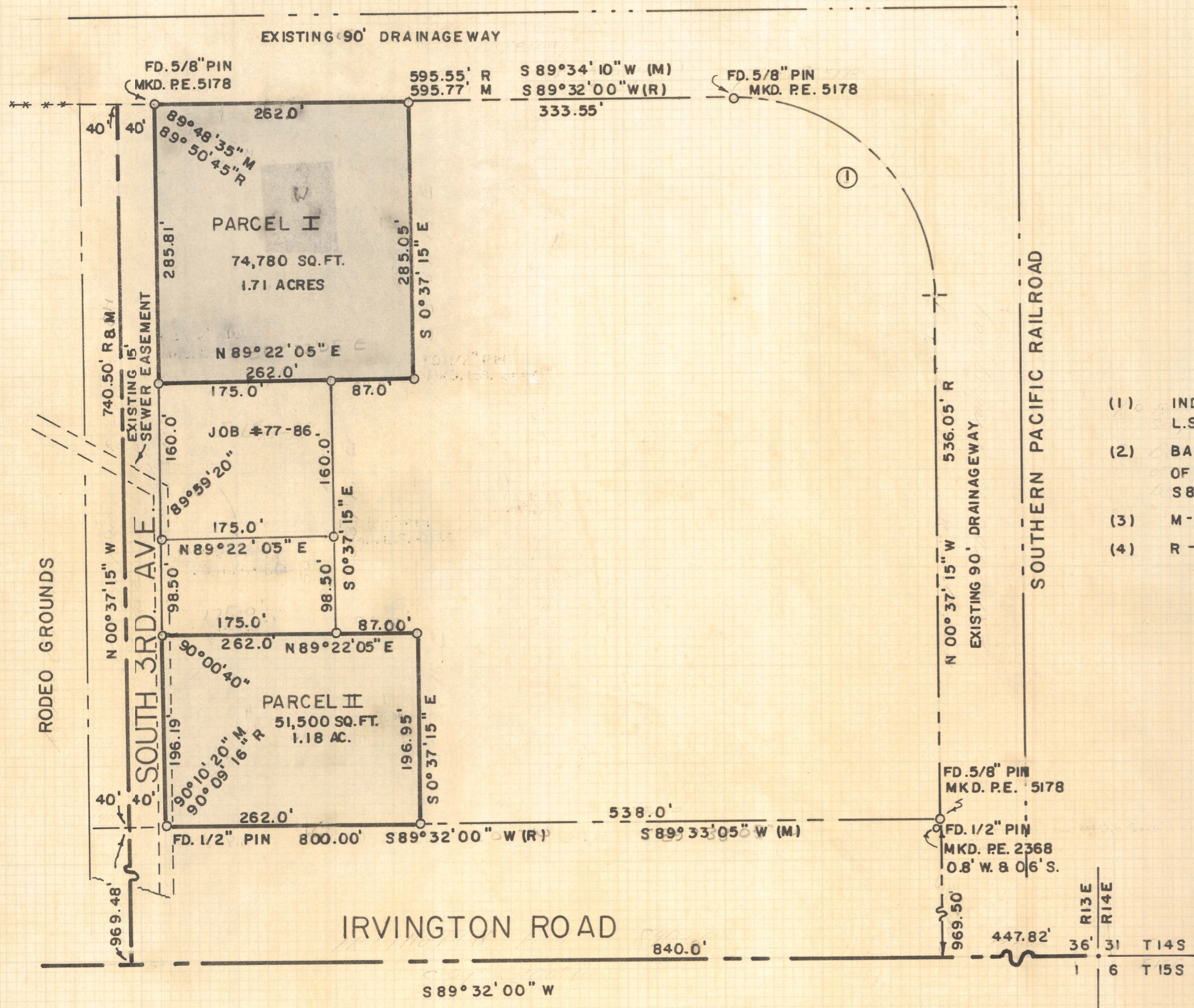


DISCLAIMER:

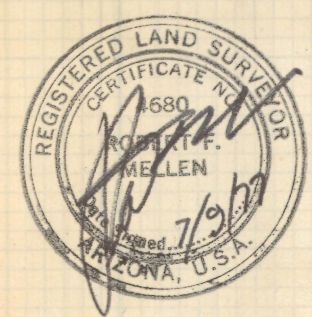
This unrecorded Record of Survey was donated to the City of Tucson. The City of Tucson provides this data for your personal use "as is." Additionally, the City of Tucson provides this information with the understanding that it is not guaranteed to be accurate, correct or complete and conclusions drawn from such information are the responsibility of the user.



SCALE 1"=100'

NOTES

- (1) INDICATES 1/2" PIN SET MARKED L.S. 4680 UNLESS NOTED
- (2) BASIS OF BEARINGS NORTH RIGHT OF WAY LINE OF IRVINGTON ROAD S 89° 32' 00" W
- (3) M - MEASURED
- (4) R - MAP OR DEED RECORD



RESULTS OF SURVEY

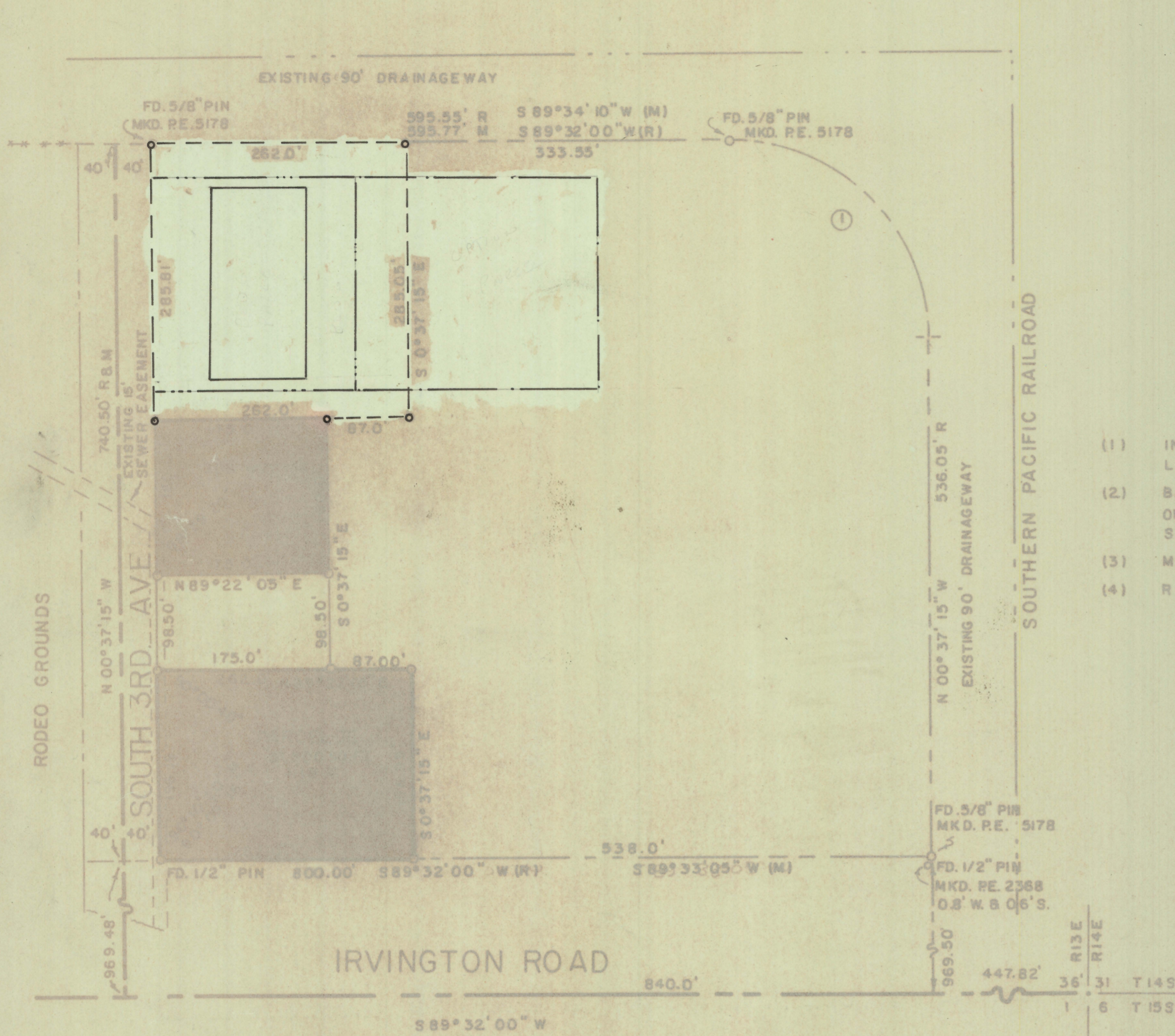
OF PART OF THE SOUTHEAST QUARTER OF SECTION 36, TOWNSHIP 14 SOUTH OF RANGE 13 EAST, GILA AND SALT RIVER BASE AND MERIDIAN, PIMA COUNTY, ARIZONA

CURVE DATA					
NO.	DELTA	RADIUS	LENGTH	TANGENT	CHORD
1	89°50'45"	205.0	321.46	204.45	289.52

ROBERT F. MELLEN
REGISTERED LAND SURVEYOR
TUCSON, ARIZONA

JOB # 77-115
JULY 1977

Z-2020-892-001



NOTES

- (1) INDICATES 1/2" PIN SET MARKED L.S. 4680 UNLESS NOTED
- (2) BASIS OF BEARINGS-NORTH RIGHT OF WAY LINE OF IRVINGTON ROAD S 89° 32' 00" W
- (3) M - MEASURED
- (4) R - MAP OR DEED RECORD



RESULTS OF SURVEY

OF PART OF THE SOUTHEAST QUARTER OF SECTION 36, TOWNSHIP 14 SOUTH OF RANGE 13 EAST, GILA AND SALT RIVER BASE AND MERIDIAN, PIMA COUNTY, ARIZONA

CURVE DATA					
NO.	DELTA	RADIUS	LENGTH	TANGENT	CHORD
1	89° 50' 45"	205.0	321.46	204.45	299.52

ROBERT F. MELLEN
REGISTERED LAND SURVEYOR
TUCSON, ARIZONA

JOB # 77-115
JULY 1977

Z-2020-892-002