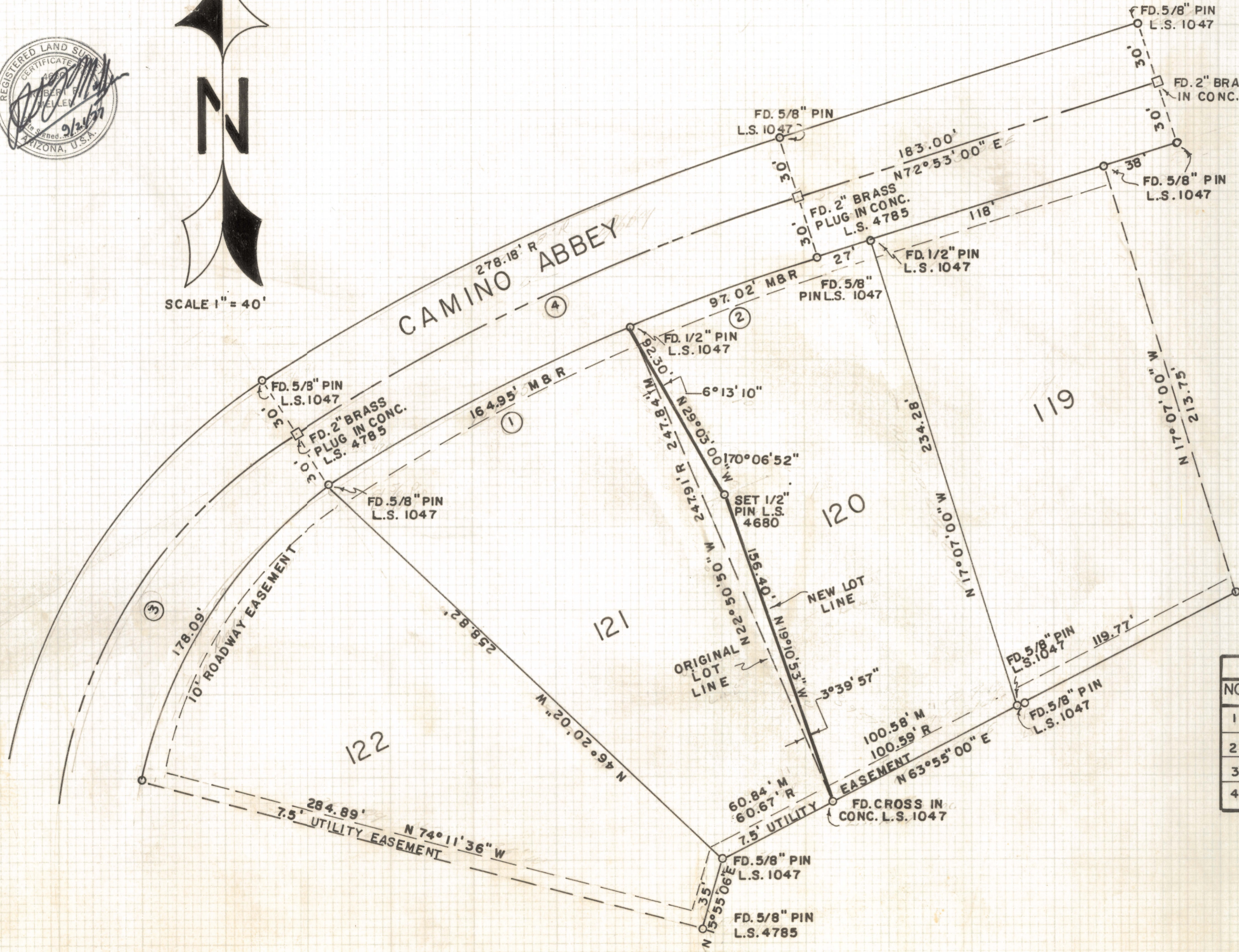
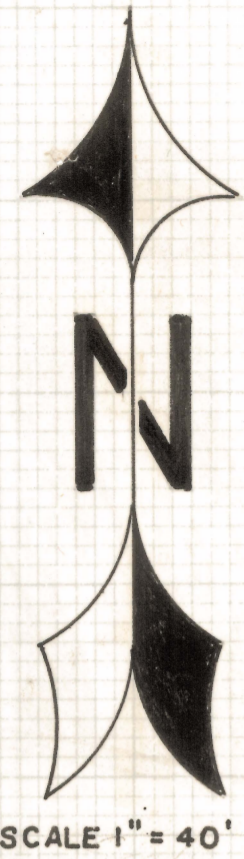


DISCLAIMER:

This unrecorded Record of Survey was donated to the City of Tucson. The City of Tucson provides this data for your personal use "as is." Additionally, the City of Tucson provides this information with the understanding that it is not guaranteed to be accurate, correct or complete and conclusions drawn from such information are the responsibility of the user.



RESULTS OF SURVEY

OF LOTS 120 AND 121 OF SANTA CATALINA ESTATES #4 AS RECORDED IN BOOK 17 OF MAPS AND PLATS AT PAGE 17 IN THE OFFICE OF THE PIMA COUNTY RECORDER, PIMA COUNTY, ARIZONA

CURVE DATA				
NO.	DELTA	RADIUS	TANGENT	LENGTH
1	9° 44' 35"	970.0	82.67	164.95
2	5° 43' 50"	970.0	48.55	97.02
3	76° 51' 08"	250.0	198.33	335.33
4	15° 28' 27"	1000.0	135.86	270.07

ROBERT F. MELLEN
 REGISTERED LAND SURVEYOR
 TUCSON, ARIZONA
 JOB # 77-135
 SEPT. 1977