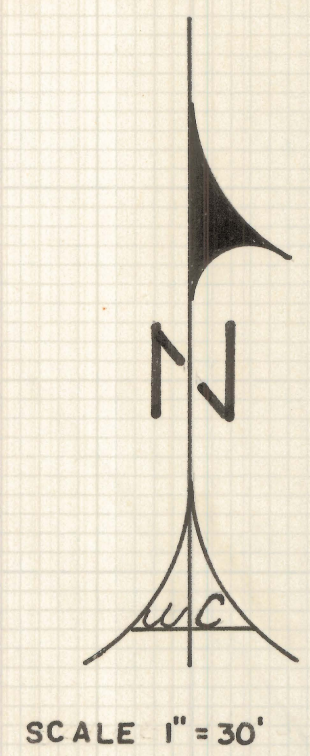
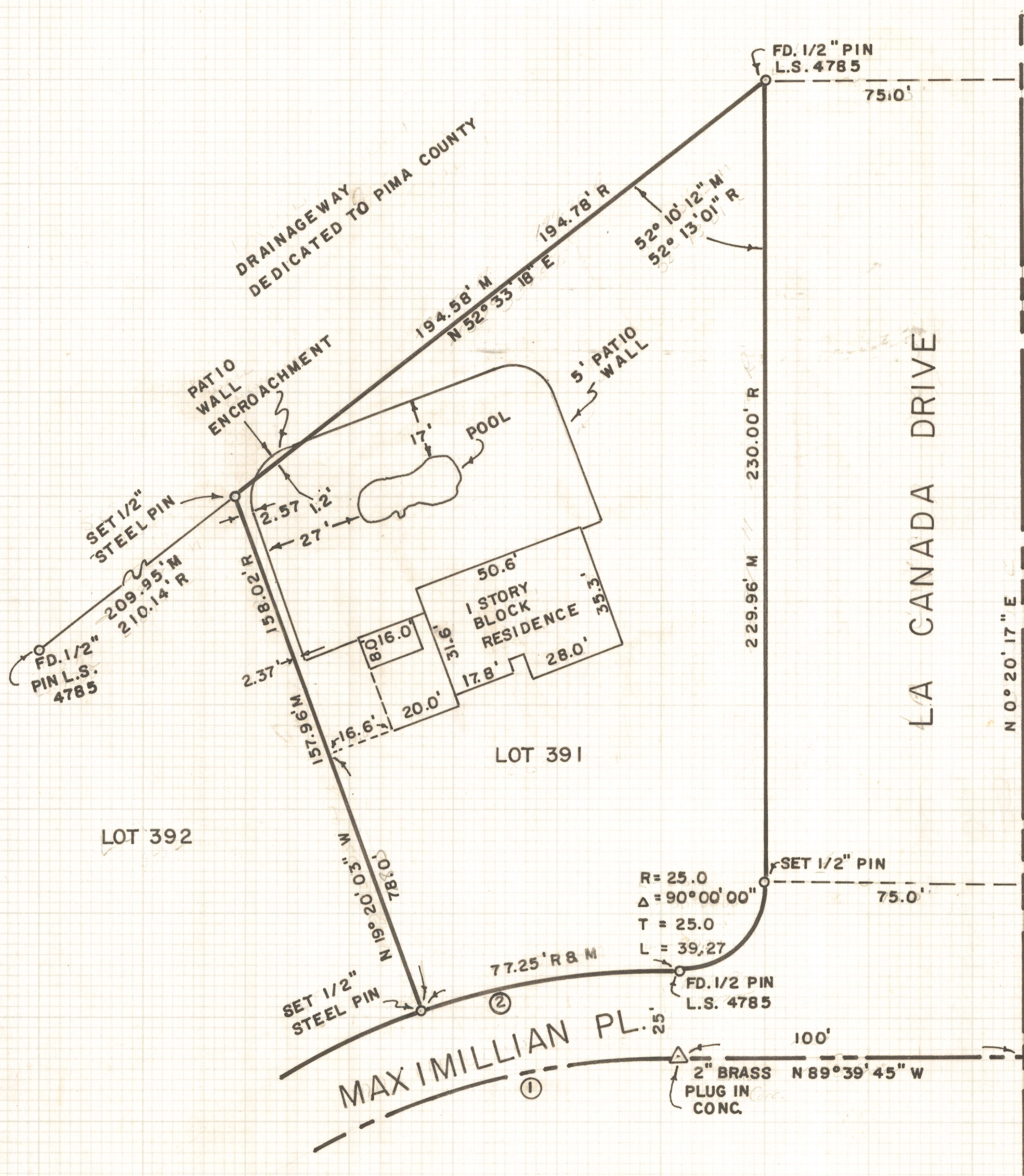


DISCLAIMER:

This unrecorded Record of Survey was donated to the City of Tucson. The City of Tucson provides this data for your personal use "as is." Additionally, the City of Tucson provides this information with the understanding that it is not guaranteed to be accurate, correct or complete and conclusions drawn from such information are the responsibility of the user.



CURVE DATA				
NO.	RADIUS	DELTA	TANGENT	LENGTH
1	200.00	90°00'00"	200.00	314.16
2	225.00	19°40'20"	39.01	77.25

NOTES

- (1) M - MEASURED
- (2) R - MAP RECORD
- (3) INDICATES 1/2" STEEL PIN MKD. L.S. 4680 UNLESS NOTED

RESULTS OF SURVEY

OF LOT 391 OF ORACLE HEIGHTS ESTATES (LOTS 368 THRU 403) AS RECORDED IN BOOK TWENTY-SEVEN AT PAGE SIX OF MAPS AND PLATS IN THE OFFICE OF THE PIMA COUNTY RECORDER, PIMA COUNTY, ARIZONA

ROBERT F. MELLEN
 REGISTERED LAND SURVEYOR
 TUCSON, ARIZONA
 JOB # 77-138
 SEPT. 19 77