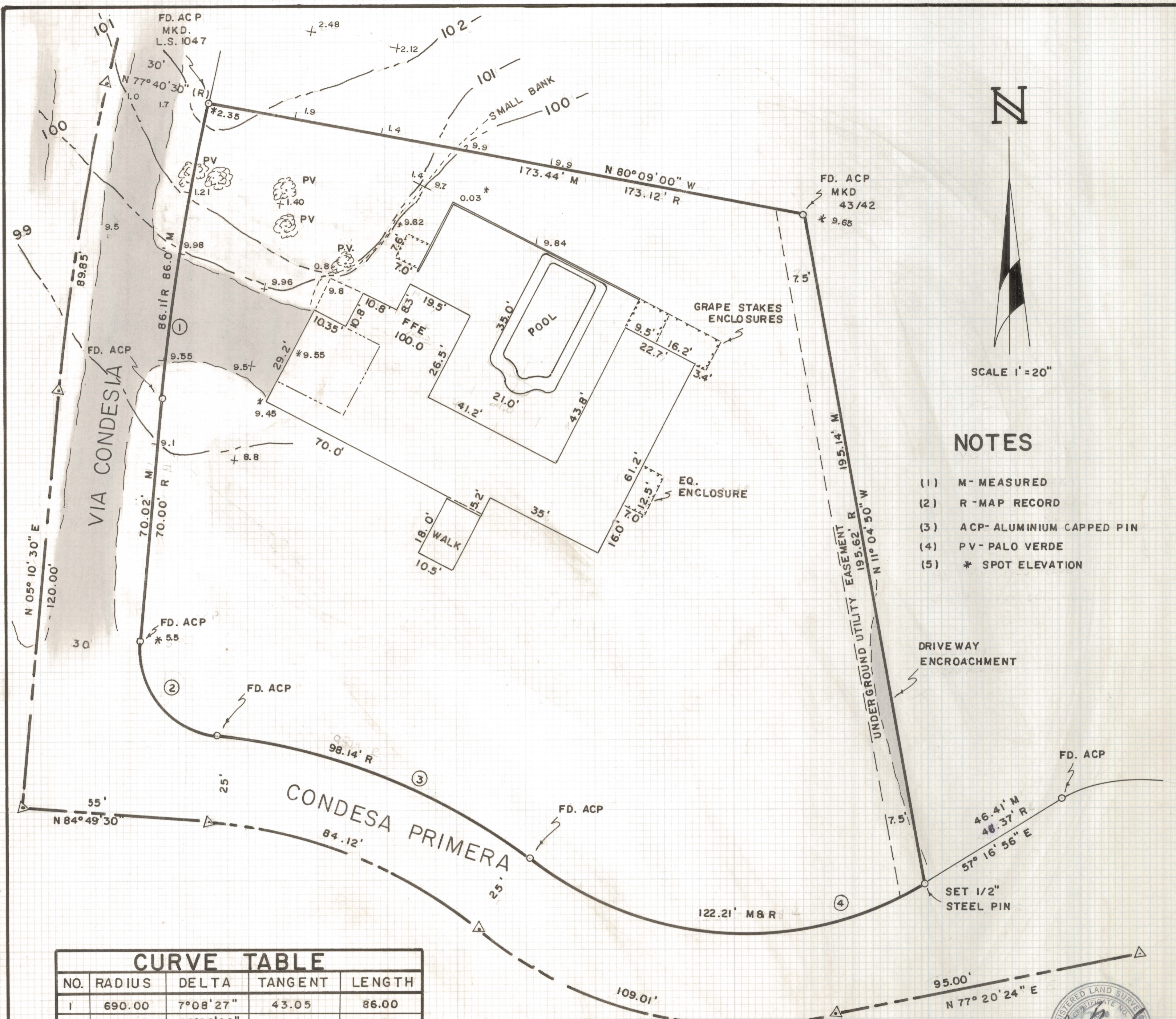


DISCLAIMER:

This unrecorded Record of Survey was donated to the City of Tucson. The City of Tucson provides this data for your personal use "as is." Additionally, the City of Tucson provides this information with the understanding that it is not guaranteed to be accurate, correct or complete and conclusions drawn from such information are the responsibility of the user.



SCALE 1" = 20"

NOTES

- (1) M - MEASURED
- (2) R - MAP RECORD
- (3) ACP - ALUMINIUM CAPPED PIN
- (4) PV - PALO VERDE
- (5) * SPOT ELEVATION

CURVE TABLE				
NO.	RADIUS	DELTA	TANGENT	LENGTH
1	690.00	7°08'27"	43.05	86.00
2	25.00	90°00'00"	25.00	39.27
3	175.00	32°07'05"	50.38	98.10
4	100.00	70°01'16"	70.05	122.21

RESULTS OF SURVEY

OF LOT 43 OF CATALINA FOOTHILLS EST. # 7 (LOTS 1-43)
 AS RECORDED IN BOOK 18 AT PAGE 64 OF MAPS & PLATS
 IN THE OFFICE OF THE PIMA COUNTY RECORDER, PIMA
 COUNTY, ARIZONA



ROBERT F. MELLEN
 REGISTERED LAND SURVEYOR
 TUCSON, ARIZONA
 JOB # 77-154
 OCT. 1977