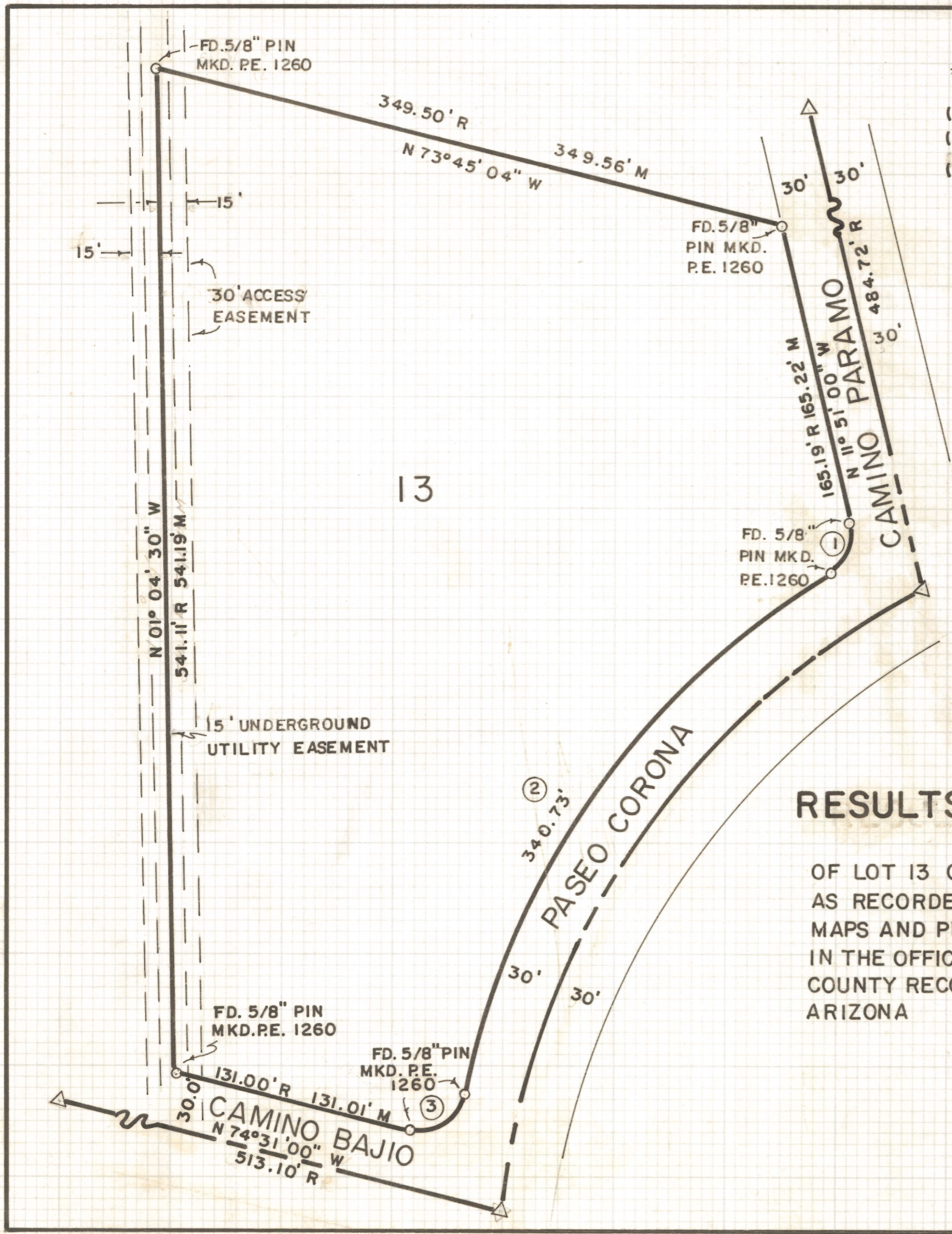


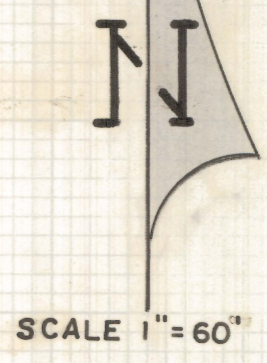
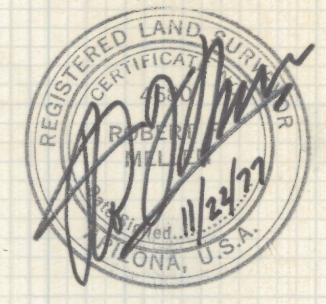
DISCLAIMER:

This unrecorded Record of Survey was donated to the City of Tucson. The City of Tucson provides this data for your personal use "as is." Additionally, the City of Tucson provides this information with the understanding that it is not guaranteed to be accurate, correct or complete and conclusions drawn from such information are the responsibility of the user.



NOTES

- (1) R - MAP RECORD
- (2) M - MEASURED
- (3) ② SEE CURVE TABLE



CURVE TABLE				
NO	DELTA	RADIUS	TANGENT	LENGTH
1	68°55'22"	25.00	17.16	30.07
2	43°57'02"	444.19	179.24	340.73
3	92°21'41"	25.00	26.05	40.30

RESULTS OF SURVEY

OF LOT 13 OF LOMAS DE ORO
 AS RECORDED IN BOOK 19 OF
 MAPS AND PLATS AT PAGE II
 IN THE OFFICE OF THE PIMA
 COUNTY RECORDER, PIMA COUNTY,
 ARIZONA

ROBERT F. MELLEN
 REGISTERED LAND SURVEYOR
 TUCSON, ARIZONA
 JOB # 77-162
 NOV. 1977.