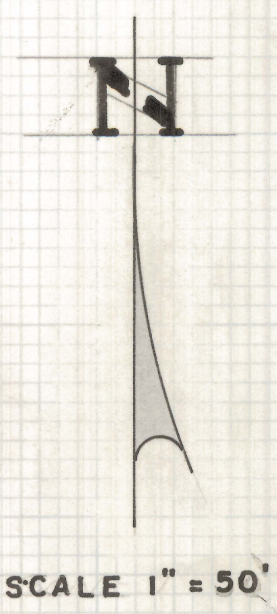
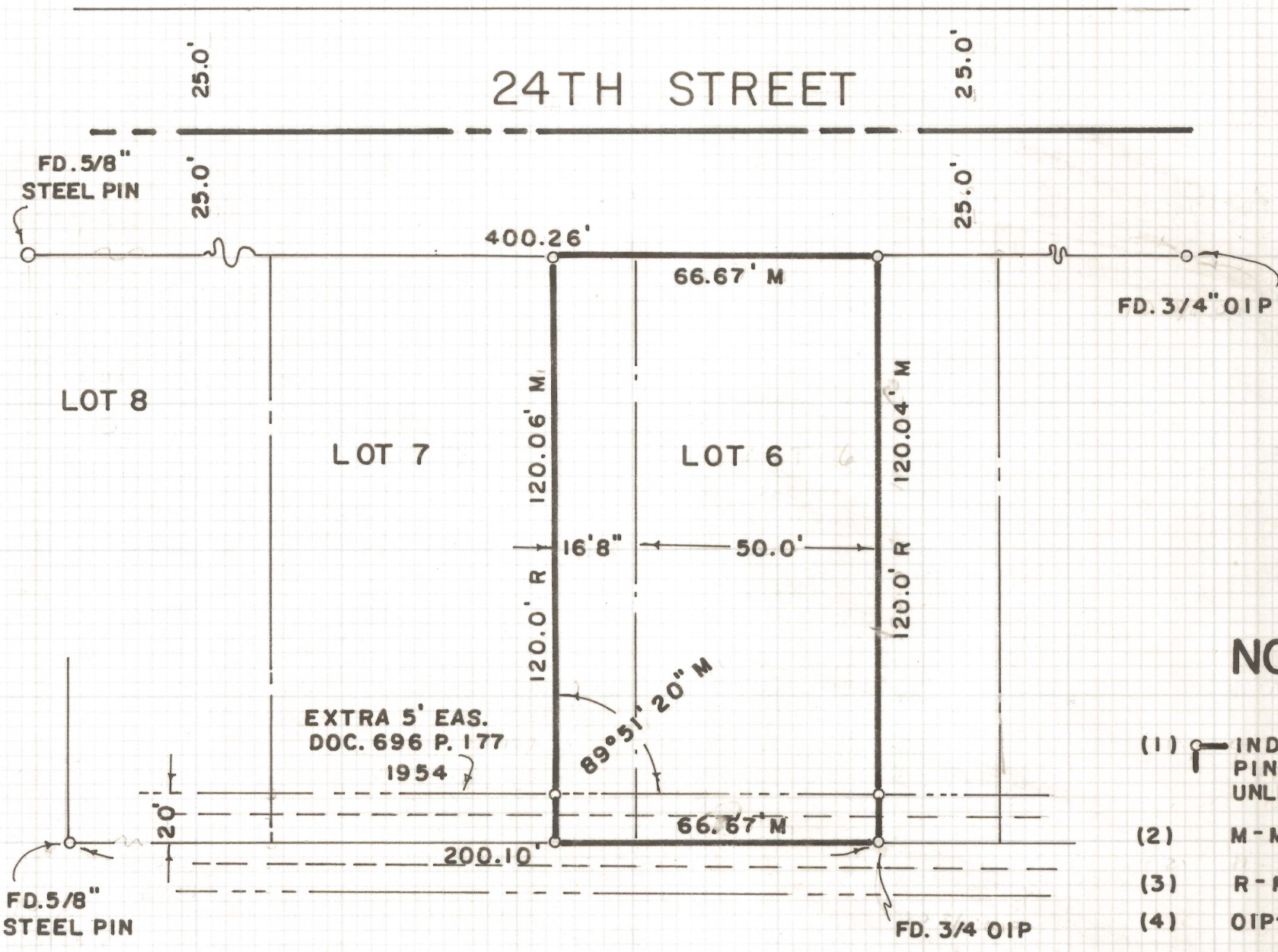


DISCLAIMER:

This unrecorded Record of Survey was donated to the City of Tucson. The City of Tucson provides this data for your personal use "as is." Additionally, the City of Tucson provides this information with the understanding that it is not guaranteed to be accurate, correct or complete and conclusions drawn from such information are the responsibility of the user.

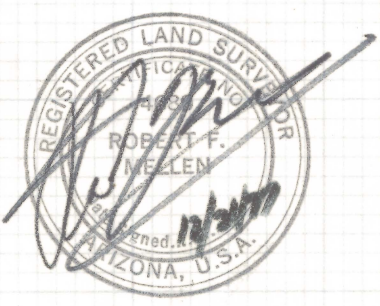


NOTES

- (1) INDICATES 1/2" STEEL PIN SET MKD. L.S. 4680 UNLESS NOTED
- (2) M - MEASURED
- (3) R - MAP RECORD
- (4) OIP - OPEN IRON PIPE

RESULTS OF SURVEY

OF THE EAST 16'8" OF LOT 7 AND THE WEST 50.0' OF LOT 6 OF SWAN PARK SUB-DIVISION AS RECORDED IN BOOK 9 OF MAPS AND PLATS AT PAGE 50 IN THE OFFICE OF THE PIMA COUNTY RECORDER, PIMA COUNTY, ARIZONA



ROBERT F. MELLEN
REGISTERED LAND SURVEYOR
TUCSON, ARIZONA
Job # 77-164

Z-2020-919