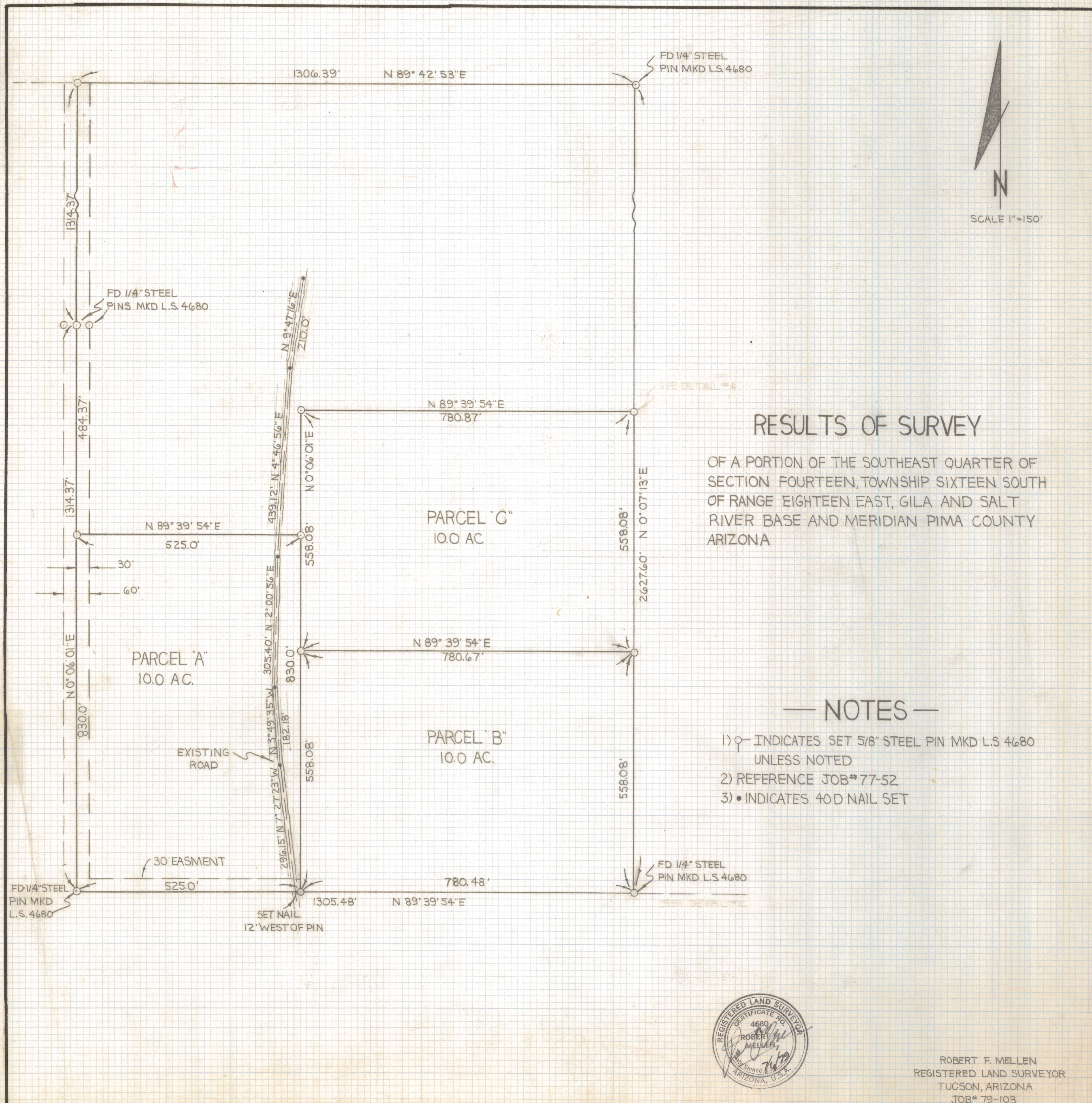
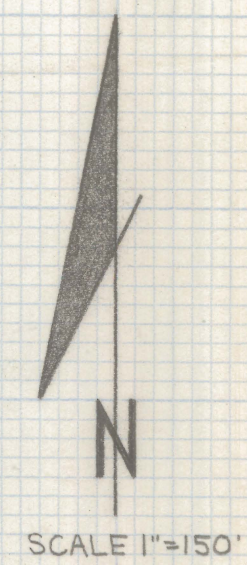


DISCLAIMER:

This unrecorded Record of Survey was donated to the City of Tucson. The City of Tucson provides this data for your personal use "as is." Additionally, the City of Tucson provides this information with the understanding that it is not guaranteed to be accurate, correct or complete and conclusions drawn from such information are the responsibility of the user.



RESULTS OF SURVEY

OF A PORTION OF THE SOUTHEAST QUARTER OF SECTION FOURTEEN, TOWNSHIP SIXTEEN SOUTH OF RANGE EIGHTEEN EAST, GILA AND SALT RIVER BASE AND MERIDIAN PIMA COUNTY ARIZONA

— NOTES —

- 1) \circ INDICATES SET 5/8" STEEL PIN MKD L.S. 4680 UNLESS NOTED
- 2) REFERENCE JOB# 77-52
- 3) \bullet INDICATES 40D NAIL SET



ROBERT F. MELLEN
 REGISTERED LAND SURVEYOR
 TUCSON, ARIZONA
 JOB# 79-103

Z-2020-930