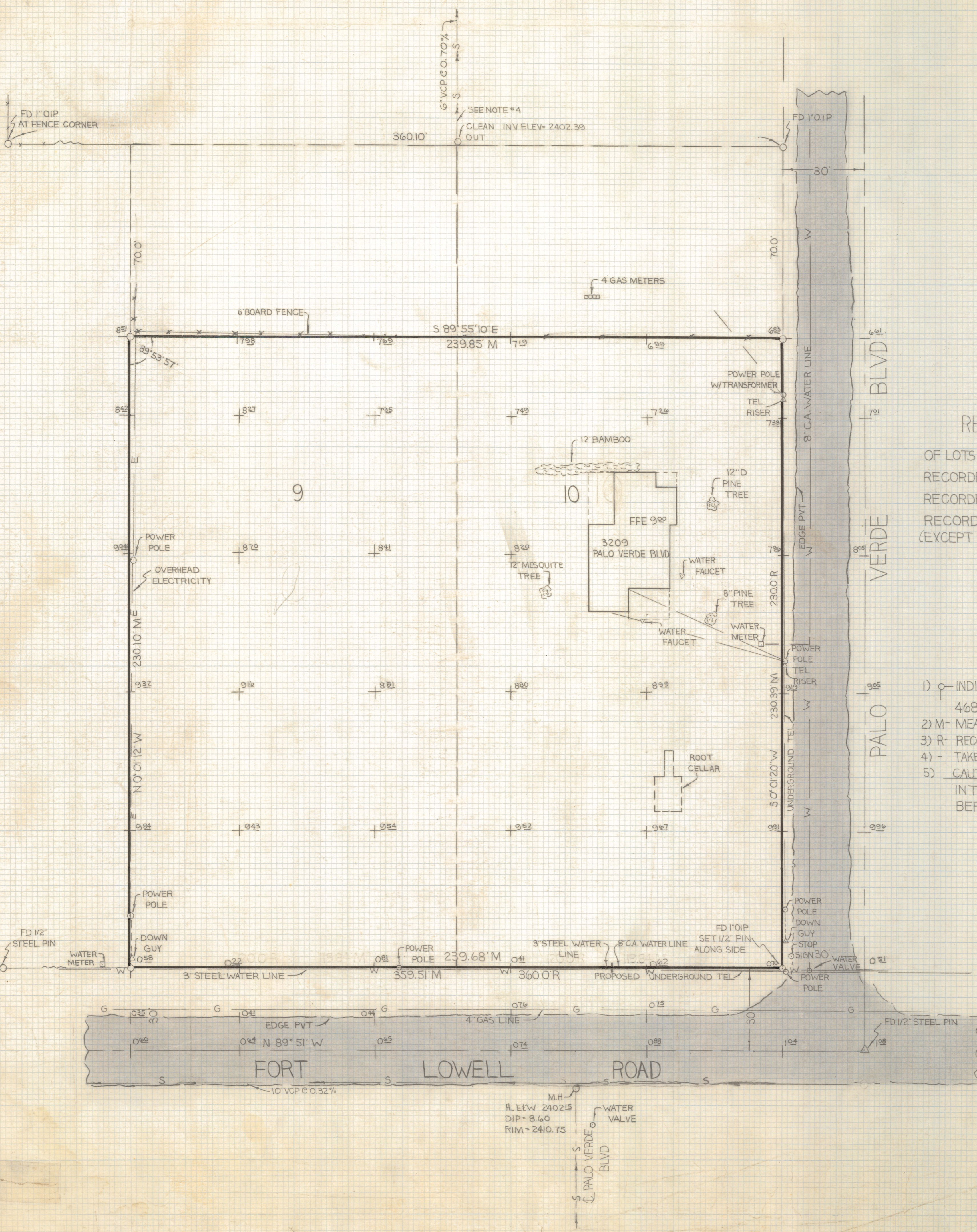


DISCLAIMER:

This unrecorded Record of Survey was donated to the City of Tucson. The City of Tucson provides this data for your personal use "as is." Additionally, the City of Tucson provides this information with the understanding that it is not guaranteed to be accurate, correct or complete and conclusions drawn from such information are the responsibility of the user.



RESULTS OF SURVEY
 OF LOTS 9 AND 10 BLOCK 1 OF McCALL ADDITION
 RECORDED IN BOOK 4 OF MAPS AND PLATS AS
 RECORDED IN THE OFFICE OF THE PIMA COUNTY
 RECORDER PIMA COUNTY ARIZONA
 (EXCEPT THE NORTH 70.0 FEET THEREOF)

- NOTES**
- 1) \circ INDICATES SET 1/2" STEEL PIN MKD L.S. 4680 UNLESS NOTED
 - 2) M- MEASURED DISTANCE
 - 3) R- RECORD DISTANCE
 - 4) - TAKEN FROM PLANS NOT VERIFIED
 - 5) CAUTION UNDERGROUND UTILITIES IN THE AREA CALL BLUE STAKE BEFORE DIGGING 792-2211

ROBERT F. MELLEN
 REGISTERED LAND SURVEYOR
 TUCSON, ARIZONA
 JOB # 79-124