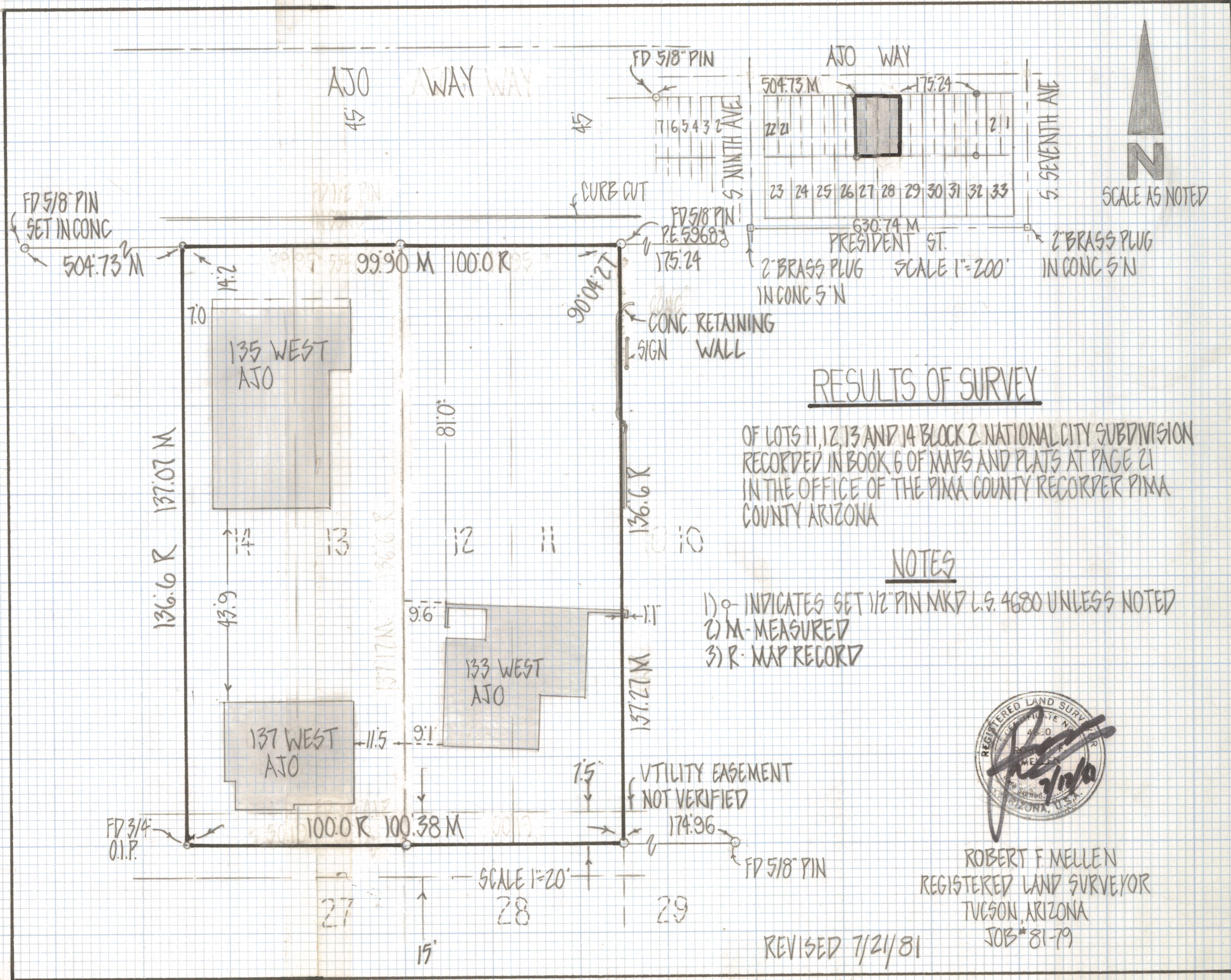


DISCLAIMER:

This unrecorded Record of Survey was donated to the City of Tucson. The City of Tucson provides this data for your personal use "as is." Additionally, the City of Tucson provides this information with the understanding that it is not guaranteed to be accurate, correct or complete and conclusions drawn from such information are the responsibility of the user.



RESULTS OF SURVEY

OF LOTS 11, 12, 13 AND 14 BLOCK 2 NATIONAL CITY SUBDIVISION
 RECORDED IN BOOK 6 OF MAPS AND PLATS AT PAGE 21
 IN THE OFFICE OF THE PINA COUNTY RECORDER PINA
 COUNTY ARIZONA

NOTES

- 1) ○ INDICATES SET 1/2" PIN MKD L.S. 4680 UNLESS NOTED
- 2) M - MEASURED
- 3) R - MAP RECORD



ROBERT F. MELLEN
 REGISTERED LAND SURVEYOR
 TUCSON, ARIZONA
 JOB # 81-79

REVISED 7/21/81