

# **DISCLAIMER:**

**This unrecorded Record of Survey was donated to the City of Tucson. The City of Tucson provides this data for your personal use "as is." Additionally, the City of Tucson provides this information with the understanding that it is not guaranteed to be accurate, correct or complete and conclusions drawn from such information are the responsibility of the user.**

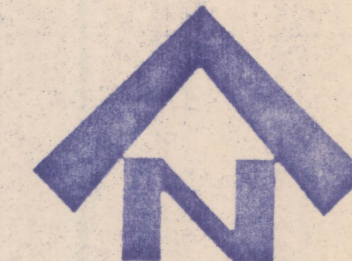
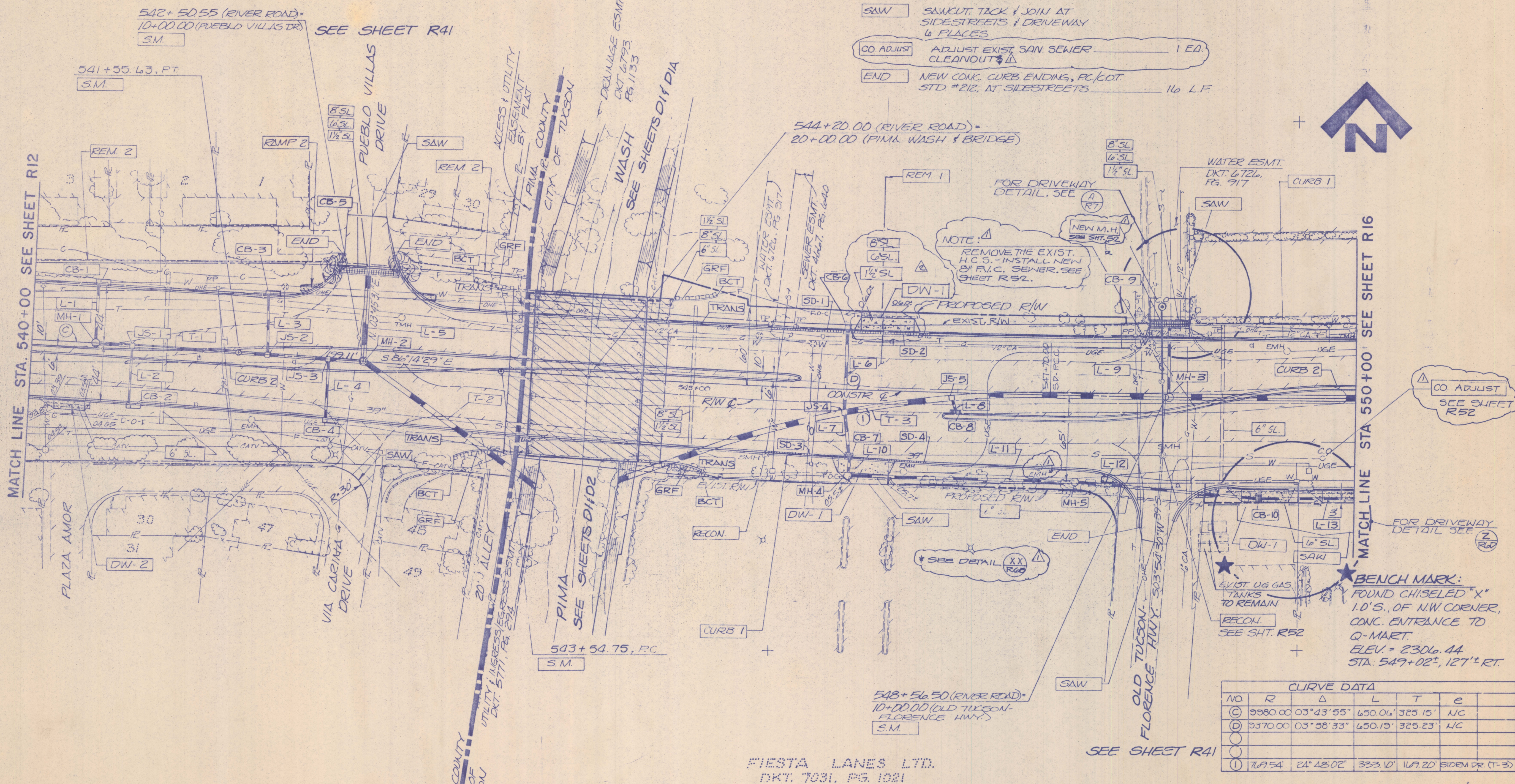
PUEBLO VILLAS, LOTS 1 - 38  
BK. 23, PG. 66

REM. REMOVALS:  
1. EXIST. PAVT. STA. 540+00 TO STA. 550+00, SIDESTREETS & DRIVEWAYS.  
2. EXIST. 6" HIGH WALL STA. 540+00, LT. TO STA. 543+70, LT.

MH JS CB T L SD  
REFER TO STRUCTURE TABLES (SHEETS RB & R9) FOR STORM DRAIN DETAILS.

CURB 2 NEW CONC. CURB, PER DETAIL STA. 540+00 TO STA. 550+00 1,529 L.F.  
CURB 1 NEW CONC. CURB, PER DETAIL STA. 540+00 TO STA. 550+00 1,739 L.F.  
DW-1 NEW CONC. DRIVEWAY, PER DETAIL LT-1 PLACE, RT-1 PLACE 860 S.F.  
DW-2 NEW CONC. DRIVEWAY, PER DETAIL LT-1 PLACE, RT-3 PLACES 1,276 S.F.  
RAMP 2 NEW CONC. WHEELCHAIR RAMP PER DETAIL 4 PLACES 4 EA.  
S.M. NEW SURVEY MONUMENT, P.C./G.O.T. STD. #103 4 EA.  
RECON. RECONSTRUCT SAN SEWER MANHOLES, P.C./W.M. STD. DETAIL 303 1 EA.  
SAW SAWCUT, TACK & JOIN AT SIDESTREETS & DRIVEWAY 6 PLACES  
CO ADJUST ADJUST EXIST. SAN SEWER CLEANOUT 1 EA.  
END NEW CONC. CURB ENDINGS, P.C./G.O.T. STD. #216, AT SIDESTREETS 16 L.F.

TRANS TRANSITION TO NEW 2 1/2" CONC. CURB, PER DETAIL 4 PLACES AT BRIDGE 100 L.F.  
8" SL 8" SLEEVE FOR MAIN LINE 5 EA.  
6" SL 6" SLEEVE FOR LATERALS 10 EA.  
1/2" SL 1/2" SLEEVE FOR WIRES 5 EA.  
GRF GUARD RAIL FLARE PER DETAIL 150 L.F.  
BCT BREAKAWAY CABLE TERMINAL ASSEMBLY PER DETAIL 4 EA.



WATER ESMT. DKT. 6726, PG. 917

MATCH LINE STA. 540+00 SEE SHEET R12

MATCH LINE STA. 550+00 SEE SHEET R16

BENCH MARK:  
FOUND CHISELED "X" 1.0'S. OF N.W. CORNER, CONC. ENTRANCE TO Q-MART.  
ELEV. = 2306.44  
STA. 549+02", 127' RT.

NO	R	Δ	L	T	e
(C)	9380.00	03°43'55"	650.06'	325.15'	N/C
(D)	9370.00	03°58'33"	650.19'	325.23'	N/C
(E)					
(L)	769.54	24°48'02"	333.10'	1169.20'	SIDEM DR (T-3)

FIESTA LANES LTD.  
DKT. 7031, PG. 1021

NOTE: FOR R/W & EASEMENTS, SEE SHEETS RW3 & RW4.

NOTE: HORIZONTAL CONTROL FOR THIS SHEET SHOWN ON SHEET H2.

Two working days before you dig  
CALL FOR THE BLUE STAKES  
**792-2211**  
Blue Stake Center  
CALL COLLECT

CASA CARINA TOWNHOMES  
LOTS 1 - 49  
BK. 32, PG. 95

SCALE HORZ 1" = 40' SHEET R14 OF 177

Z-2020-937

PIMA COUNTY DEPARTMENT OF TRANSPORTATION AND FLOOD CONTROL DISTRICT



DATE	DESIGNED	CHECKED	PROJ. ENGR.
4/90			
4/90			
4/90			
4/90			

PLAN SHEET  
540+00 TO 550+00