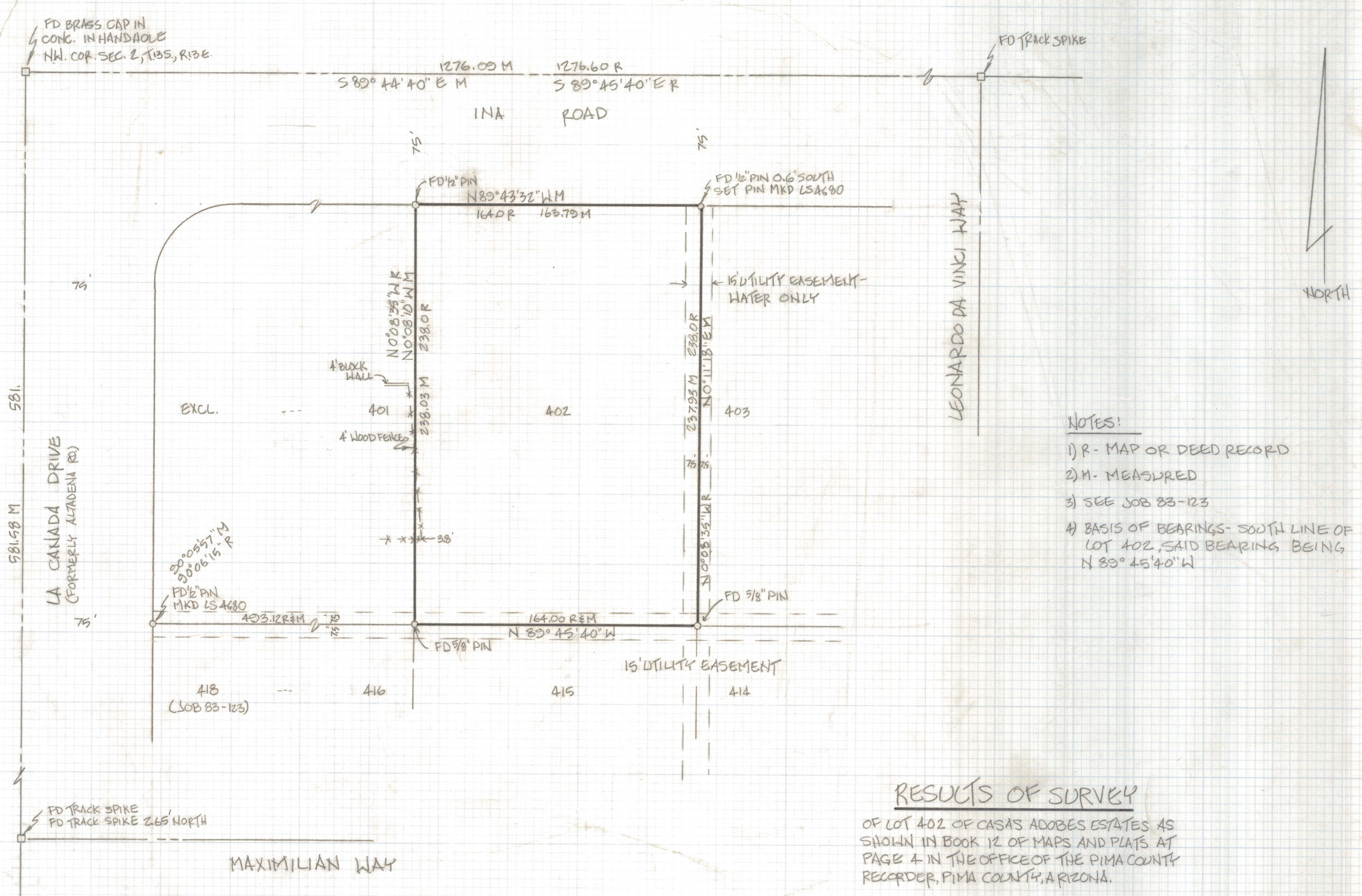


DISCLAIMER:

This unrecorded Record of Survey was donated to the City of Tucson. The City of Tucson provides this data for your personal use "as is." Additionally, the City of Tucson provides this information with the understanding that it is not guaranteed to be accurate, correct or complete and conclusions drawn from such information are the responsibility of the user.



- NOTES:
- 1) R - MAP OR DEED RECORD
 - 2) M - MEASURED
 - 3) SEE JOB 83-123
 - 4) BASIS OF BEARINGS - SOUTH LINE OF LOT 402, SAID BEARING BEING N 89° 45' 40" W

RESULTS OF SURVEY

OF LOT 402 OF CASAS ADOBES ESTATES AS SHOWN IN BOOK 12 OF MAPS AND PLATS AT PAGE 4 IN THE OFFICE OF THE PIMA COUNTY RECORDER, PIMA COUNTY, ARIZONA.



RFM	ROBERT F. MELLEN	
	REGISTERED LAND SURVEYOR	DATE: 5-3-90
	1250 W. MOLLAVE ST. TUCSON, ARIZONA	DR BY: GJM CBY: RFM
	(602) 888-1012 SCALE: 1" = 40'	JOB NO. 90-45
		REVISIONS DATE
		SHEET 1 OF 1