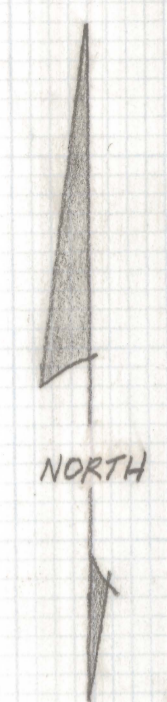
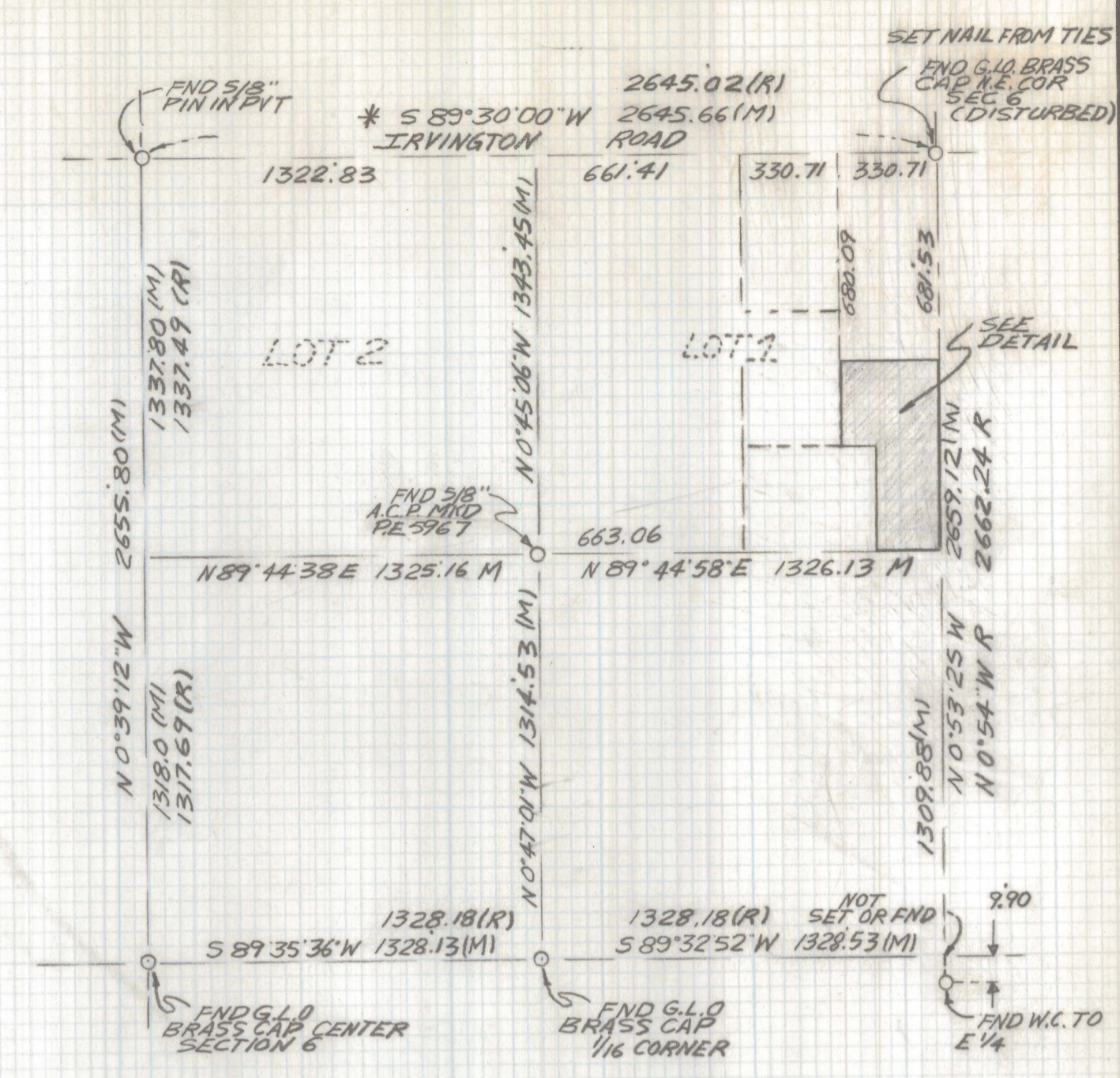
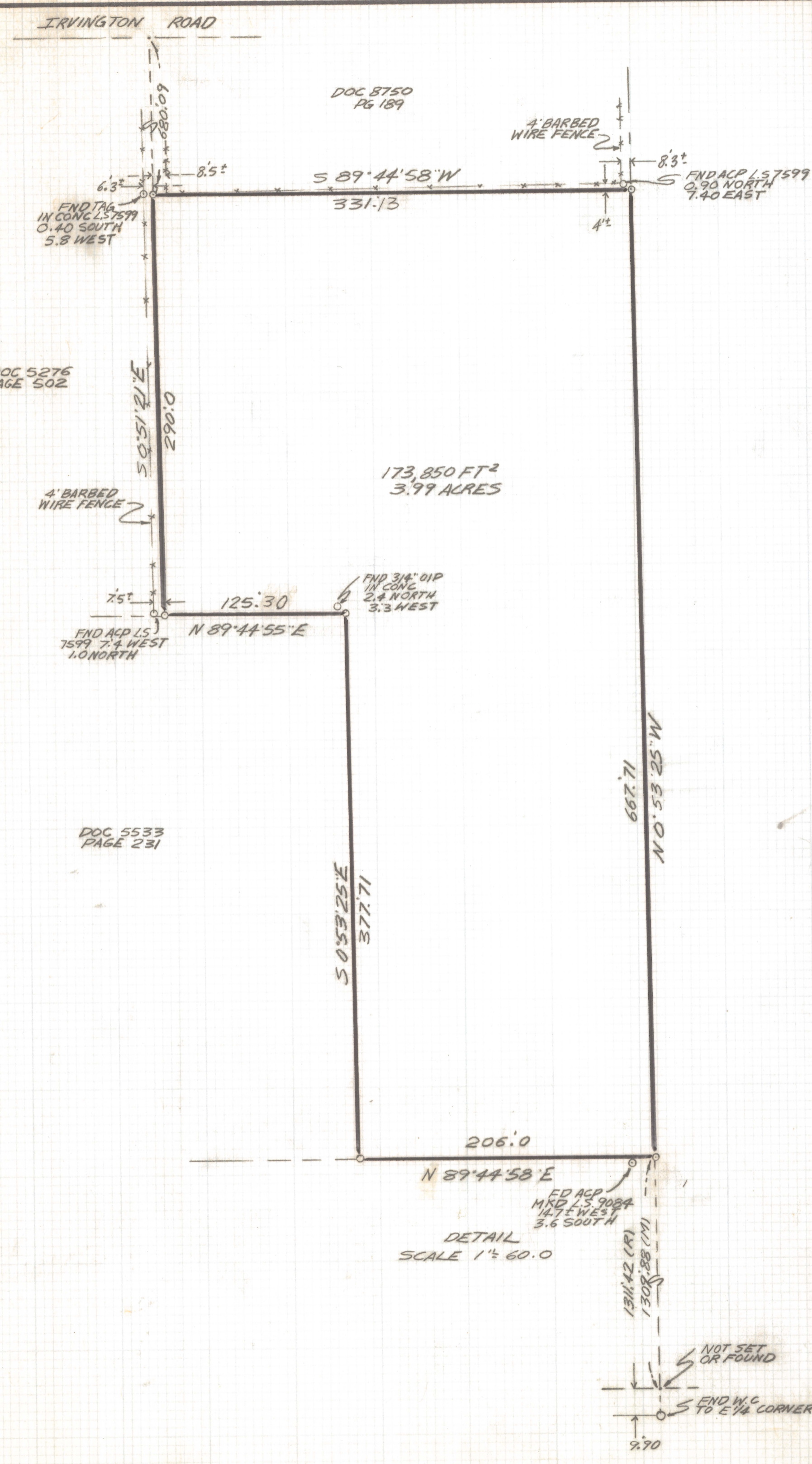


DISCLAIMER:

This unrecorded Record of Survey was donated to the City of Tucson. The City of Tucson provides this data for your personal use "as is." Additionally, the City of Tucson provides this information with the understanding that it is not guaranteed to be accurate, correct or complete and conclusions drawn from such information are the responsibility of the user.



LOCATION MAP
 NORTHEAST CORNER SECTION 6
 TWP 15 S, R13E, G5SRB1M
 PIMA COUNTY, ARIZONA
 SCALE 1"=500'

NOTES

- (1) Q INDICATES SET 1/2" PIN MKD L.S. 4680 UNLESS NOTED
- (2) M- MEASURED
- (3) R- MAP OR DEED RECORD
- (4) * BASIS OF BEARINGS S 89°30'00" W NORTH LINE SECTION 6 G.L.O.
- (5) SEE RECORD OF SURVEY OF A PORTION OF SECTION 6 TWP 15 S R13E G5SRB1M, PIMA COUNTY, BY URBAN ENGINEERING DATED OCT. 24, 1975 RECORDED IN BOOK 1 PG 77 RECORD OF SURVEY
- (6) SEE JOB 487-75

RESULTS OF SURVEY

OF A PORTION OF THE EAST HALF OF LOT ONE OF SECTION 6 TOWNSHIP 15 SOUTH, RANGE 13 EAST, GILA AND SALT RIVER BASE AND MERIDIAN, PIMA COUNTY, ARIZONA



REVISIONS	DATE
	DATE: 10-22-90 57
	DR BY: EMT CKB41
	JOB NO. 90-88
	SHEET 1 OF 1

