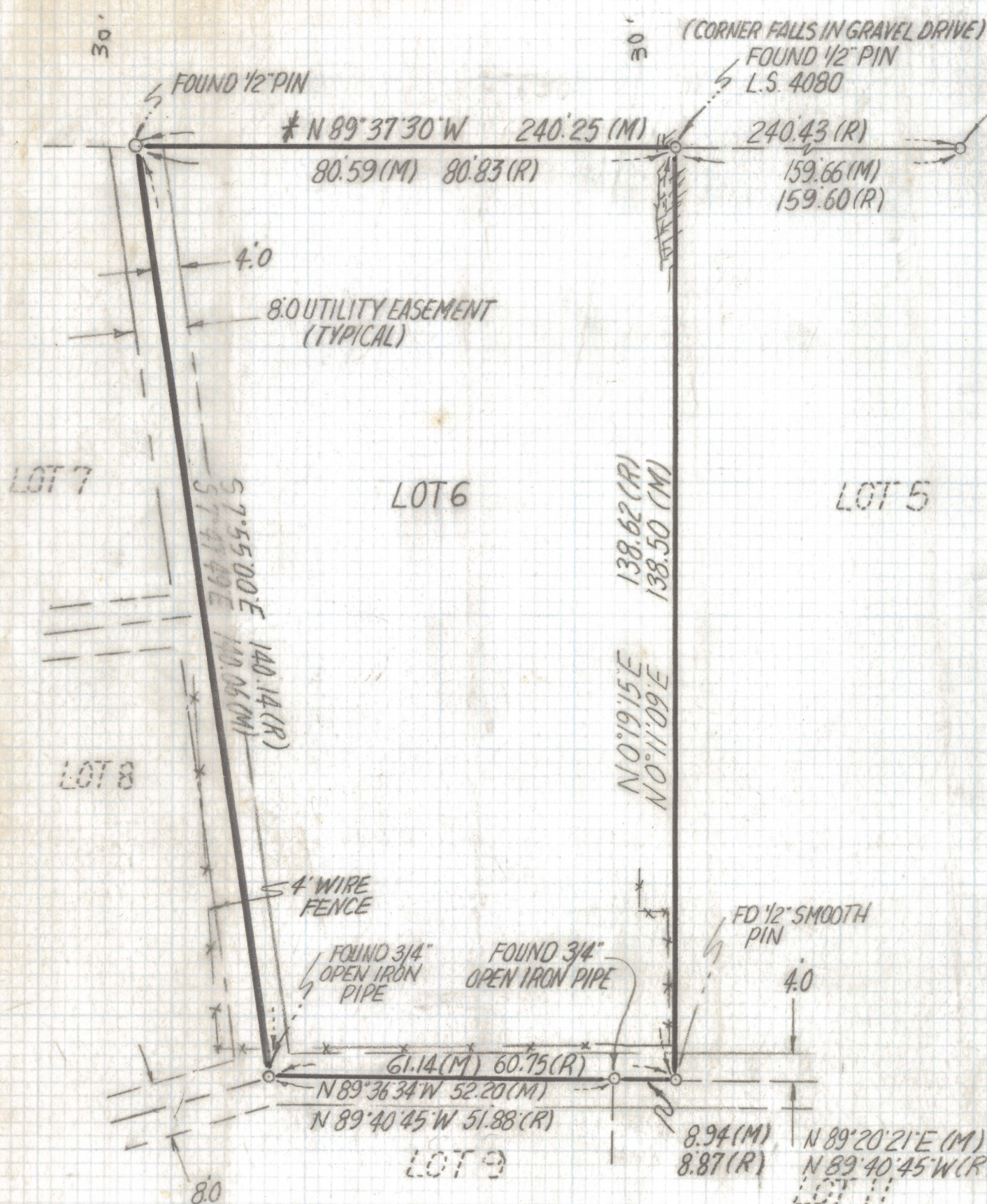


# **DISCLAIMER:**

**This unrecorded Record of Survey was donated to the City of Tucson. The City of Tucson provides this data for your personal use "as is." Additionally, the City of Tucson provides this information with the understanding that it is not guaranteed to be accurate, correct or complete and conclusions drawn from such information are the responsibility of the user.**



HAYNE STREET



*Everett M. Trueblood*  
 NOTES



- (1) ♀ INDICATES SET 1/2" PIN MKD RLS 25405 UNLESS NOTED
- (2) M- MEASURED
- (3) R- MAP OR DEED RECORD
- (4) \* BASIS OF BEARINGS N 89° 37' 30" W NORTH LINE LOT 6 BLOCK 4 SAN GABRIEL BOOK 6 PAGE 98 MAPS AND PLATS
- (5) EASEMENTS TAKEN FROM ORIGINAL SUBDIVISION PLAT, NO TITLE REPORT FURNISHED

RESULTS OF SURVEY

OF LOT 6 BLOCK 4 SAN GABRIEL AS RECORDED IN BOOK 6 OF MAPS AND PLATS AT PAGE 98 IN THE OFFICE OF THE PIMA COUNTY RECORDER PIMA COUNTY, ARIZONA.

SCALE 1"=20'0

EVERETT M. TRUEBLOOD  
 REGISTERED LAND SURVEYOR  
 TUCSON, ARIZONA  
 JOB # 93-6