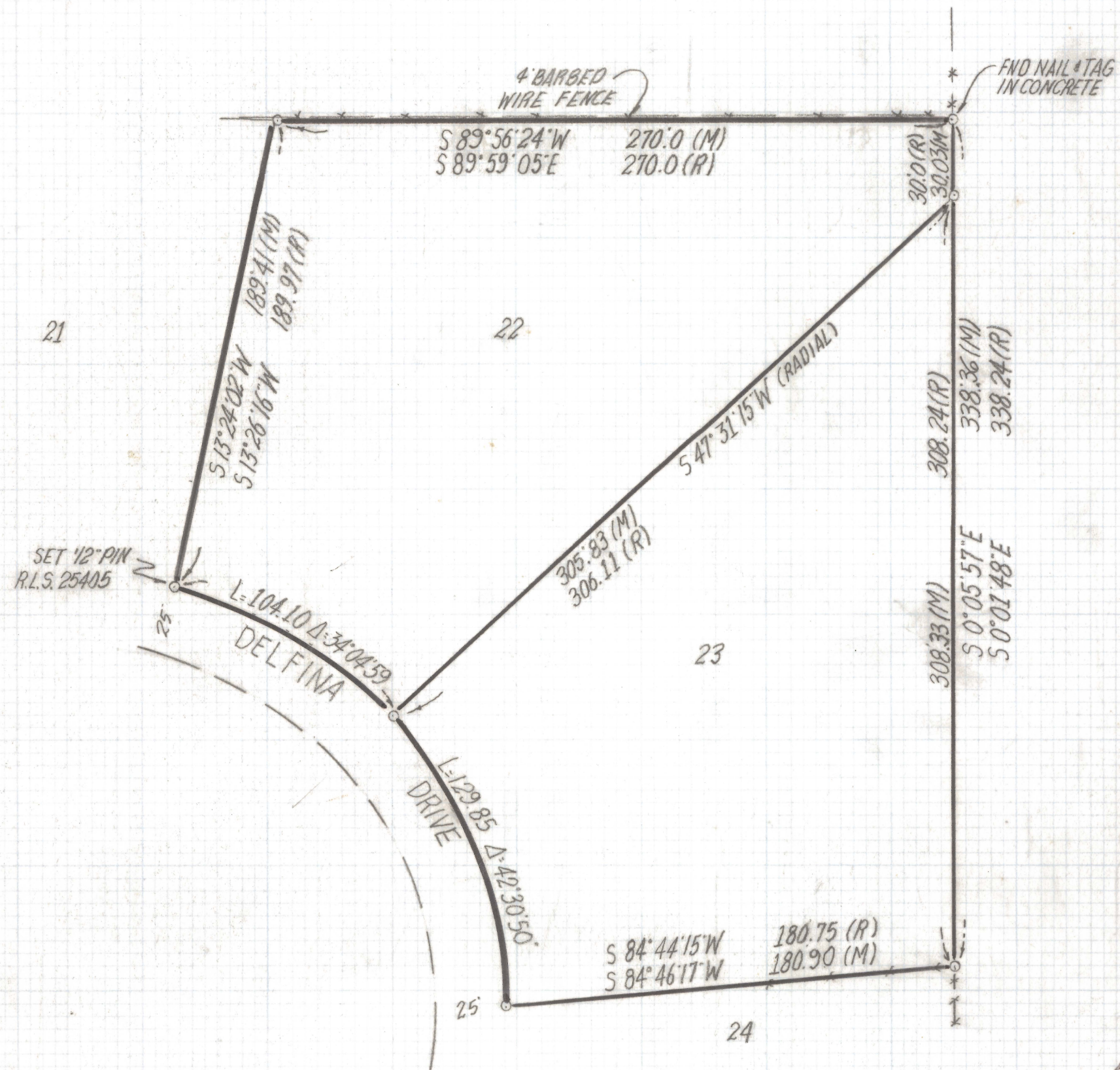


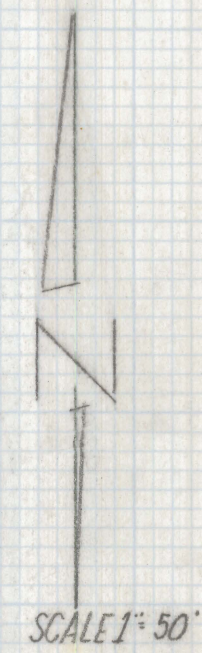
# **DISCLAIMER:**

**This unrecorded Record of Survey was donated to the City of Tucson. The City of Tucson provides this data for your personal use "as is." Additionally, the City of Tucson provides this information with the understanding that it is not guaranteed to be accurate, correct or complete and conclusions drawn from such information are the responsibility of the user.**





CURVE DATA					
N <sup>o</sup>	RADIUS	DELTA	TANGENT	LENGTH	CHORD
1	175.0	34°04'59"	53.64	104.10	102.57
2	175.0	42°30'50"	68.08	129.85	126.89



NOTES

- (1) ♀ INDICATES FOUND 1/2" PIN MKD P.E. 2663 UNLESS NOTED
- (2) M-MEASURED
- (3) R-MAP OR DEED RECORD
- (4) \* BASIS OF BEARINGS S 47°31'15"W PROPERTY LINE BETWEEN LOTS 22 AND 23 PER TUCSON MTN. PARK EST. BOOK 25 PAGE 39 MAPS AND PLATS.
- (5) NO TITLE REPORT FURNISHED

RESULTS OF SURVEY

OF LOTS 22 AND 23 TUCSON MOUNTAIN PARK ESTATES AS RECORDED IN BOOK 25 OF MAPS AND PLATS PAGE 39 IN THE OFFICE OF THE PIMA COUNTY RECORDER PIMA COUNTY ARIZONA



EVERETT M. TRUEBLOOD  
REGISTERED LAND SURVEYOR  
TUCSON, ARIZONA  
JOB# 95-6