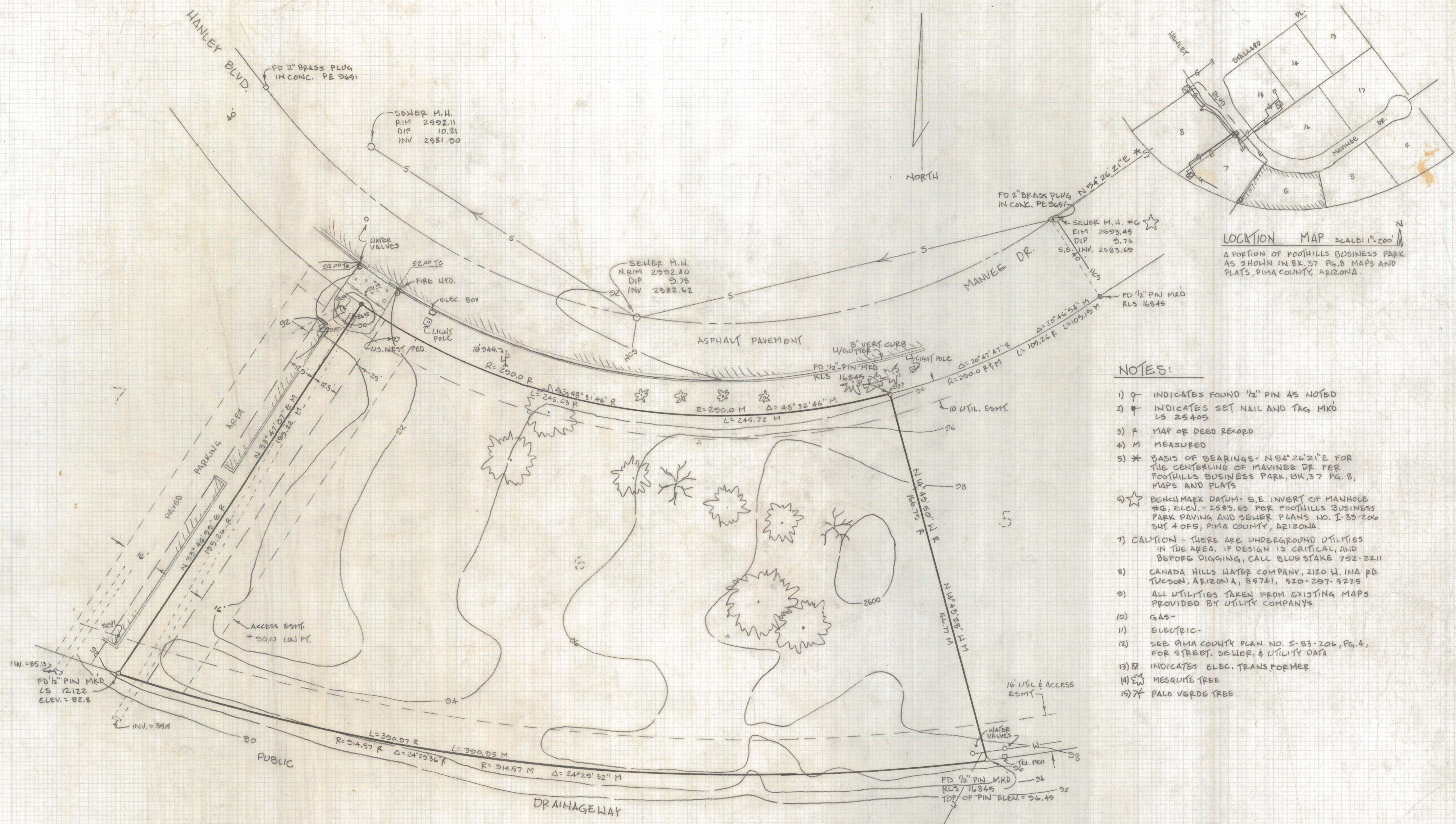
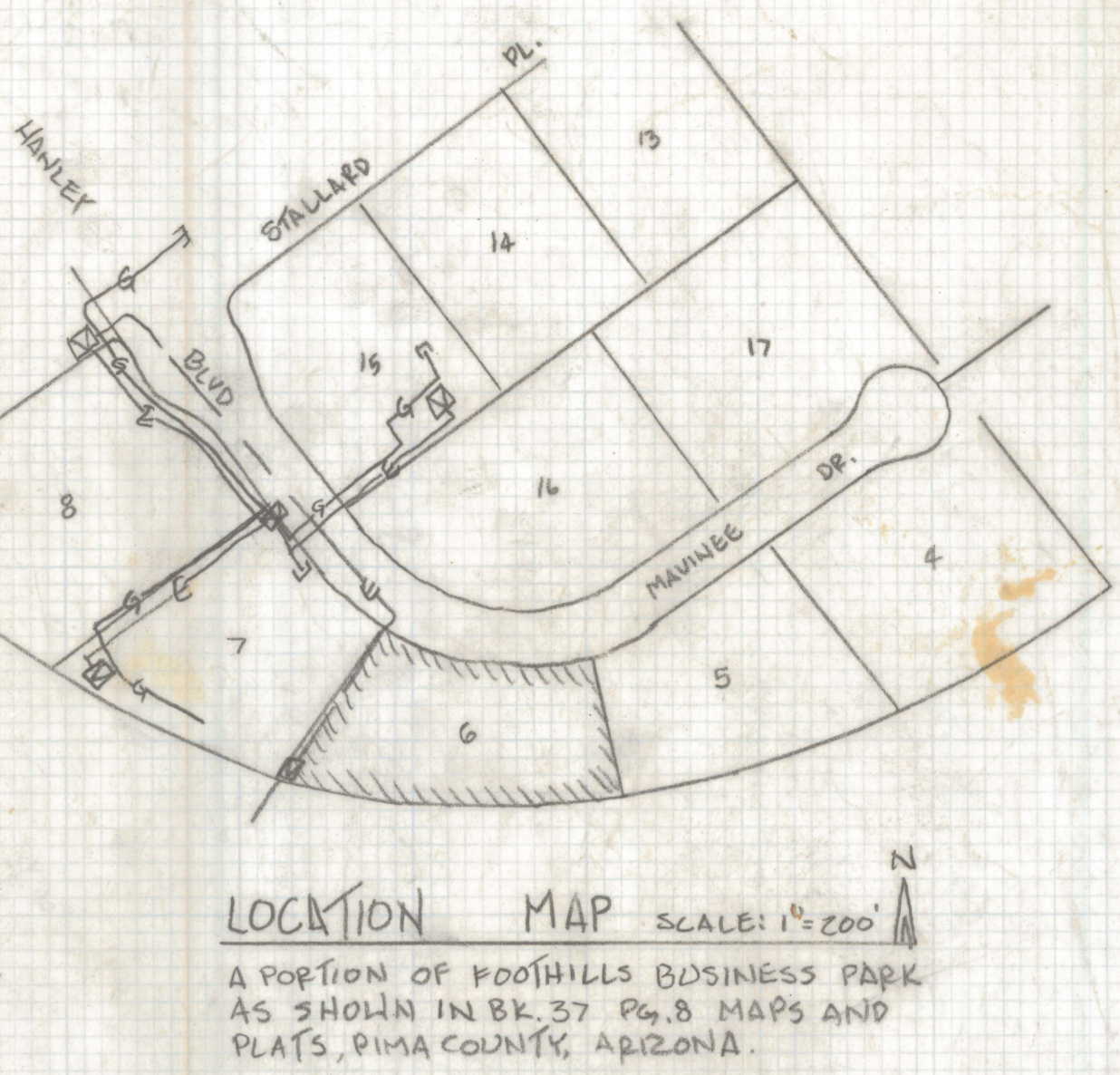


DISCLAIMER:

This unrecorded Record of Survey was donated to the City of Tucson. The City of Tucson provides this data for your personal use "as is." Additionally, the City of Tucson provides this information with the understanding that it is not guaranteed to be accurate, correct or complete and conclusions drawn from such information are the responsibility of the user.



- NOTES:**
- 1) \circ INDICATES FOUND 1/2" PIN AS NOTED
 - 2) \bullet INDICATES SET NAIL AND TAG MKD LS 25405
 - 3) R MAP OR DEED RECORD
 - 4) M MEASURED
 - 5) * BASIS OF BEARINGS - $N 54^{\circ} 26' 21'' E$ FOR THE CENTERLINE OF MANNEE DR PER FOOTHILLS BUSINESS PARK, BK. 37 PG. 8, MAPS AND PLATS
 - 6) \star BENCHMARK DATUM - S.E. INVERT OF MANHOLE #6, ELEV. = 2583.69 PER FOOTHILLS BUSINESS PARK PAVING AND SEWER PLANS NO. I-83-206 SHT. 4 OF 5, PIMA COUNTY, ARIZONA.
 - 7) CAUTION - THERE ARE UNDERGROUND UTILITIES IN THE AREA. IF DESIGN IS CRITICAL, AND BEFORE DIGGING, CALL BLUE STAKE 792-2211
 - 8) CANADA HILLS WATER COMPANY, 2120 W. INA RD. TUCSON, ARIZONA, 85741, 520-297-5225
 - 9) ALL UTILITIES TAKEN FROM EXISTING MAPS PROVIDED BY UTILITY COMPANYS
 - 10) GAS-
 - 11) ELECTRIC-
 - 12) SEE PIMA COUNTY PLAN NO. I-83-206, PG. 4, FOR STREET, SEWER, & UTILITY DATA
 - 13) \square INDICATES ELEC. TRANSFORMER
 - 14) \square MESQUITE TREE
 - 15) \star PALO VERDE TREE



SCALE: 1"=20'
 CONTOUR INT. = 2'

RESULTS OF SURVEY

OF LOT 6 OF FOOTHILLS BUSINESS PARK AS RECORDED IN BOOK 37 OF MAPS AND PLATS AT PAGE 8 IN THE OFFICE OF THE PIMA COUNTY RECORDER, PIMA COUNTY, ARIZONA.



EVERETT M. TRUEBLOOD
 REGISTERED LAND SURVEYOR
 TUCSON, ARIZONA
 JOB 96-8