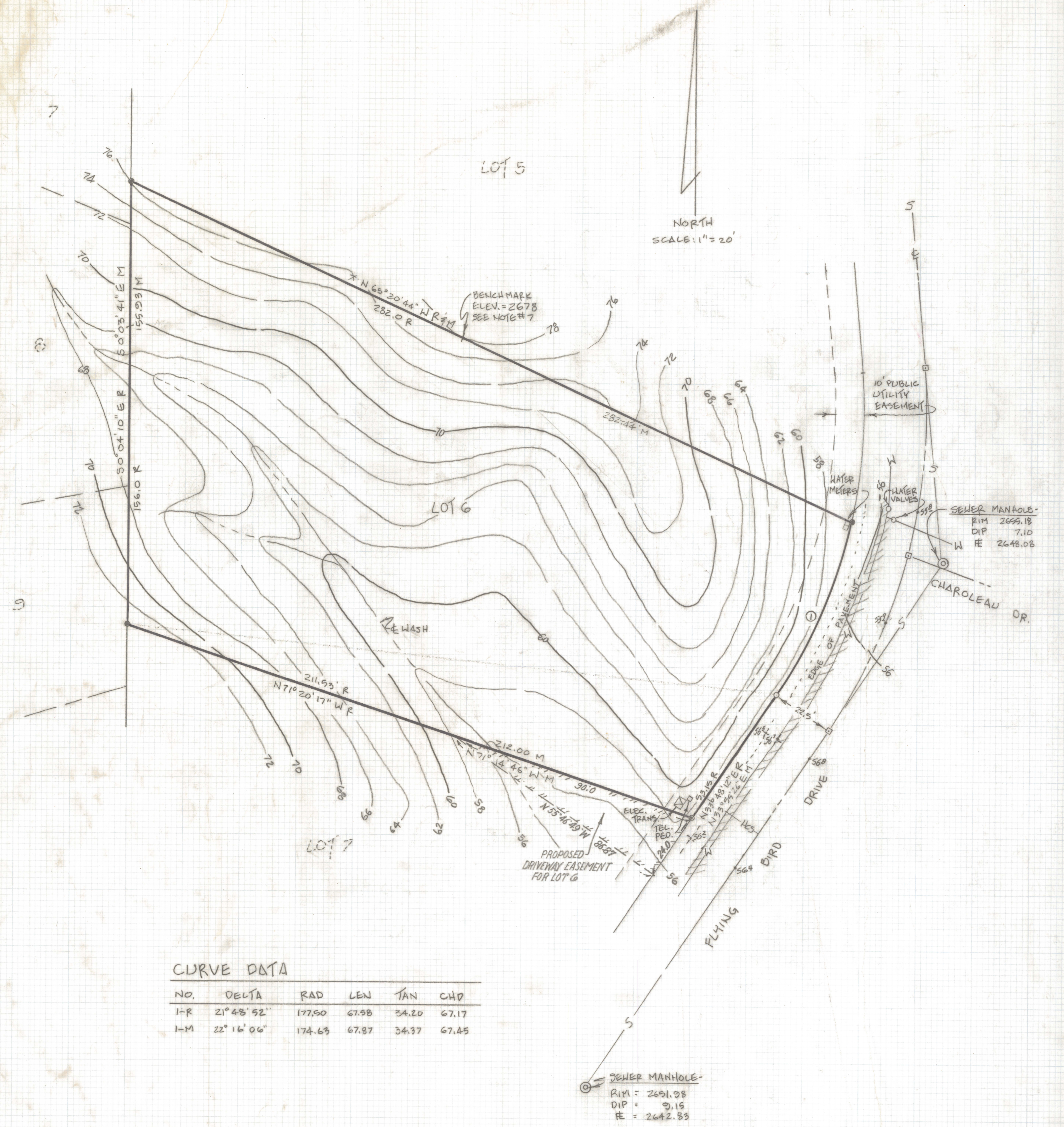


DISCLAIMER:

This unrecorded Record of Survey was donated to the City of Tucson. The City of Tucson provides this data for your personal use "as is." Additionally, the City of Tucson provides this information with the understanding that it is not guaranteed to be accurate, correct or complete and conclusions drawn from such information are the responsibility of the user.

PALISADES SOUTH
BK 45 PG 90 MAP



NORTH
SCALE: 1" = 20'

NOTES

- 1) P INDICATES 1/2" PIN MKD LS 26405 SET UNLESS NOTED
- 2) F INDICATES FOUND 1/2" PIN MKD RLS 11892 UNLESS NOTED
- 3) Q INDICATES SURVEY MONUMENT MKD RLS 11892
- 4) R MAP OR DEED RECORD
- 5) M MEASURED
- 6) * BASIS OF BEARINGS - N 65° 20' 44" W FOR THE NORTHERLY LINE OF LOT 6 OF PALISADES POINT PER BOOK 45 PAGE 48 OF MAPS AND PLATS
- 7) BENCHMARK ELEVATION 2678.00 FROM TOPOGRAPHICAL MAP PROVIDED BY OWNER OF SUBJECT PROPERTY
- 8) CAUTION - THERE ARE UNDERGROUND UTILITIES IN THE AREA; IF DESIGN IS CRITICAL, AND BEFORE DIGGING, CALL BLUE STAKE - 792-2211
- 9) HCS HOSE CONNECTION SERVICE FOR SEWER

RESULTS OF TOPOGRAPHICAL SURVEY

OF LOT 6 OF PALISADES POINT AS SHOWN IN BOOK 45 OF MAPS AND PLATS AT PAGE 48 IN THE RECORDS OF THE PIMA COUNTY RECORDER, PIMA COUNTY, ARIZONA.

CURVE DATA

NO.	DELTA	RAD	LEN	TAN	CHD
I-R	21° 48' 52"	177.50	67.98	34.20	67.17
I-M	22° 16' 06"	174.63	67.87	34.37	67.45

SEWER MANHOLE -
RIM = 2651.38
DIP = 0.15
FE = 2642.83

