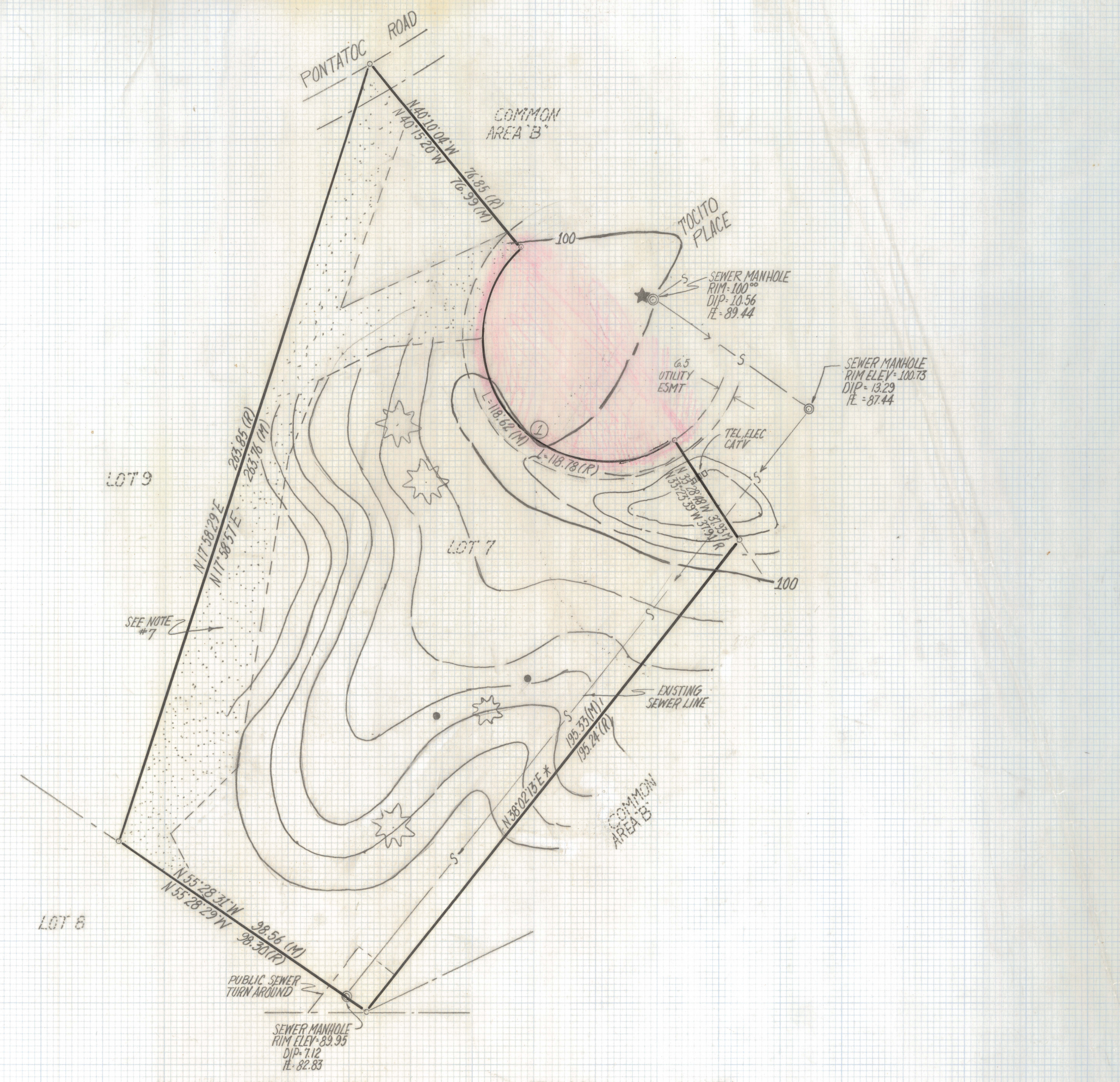


# **DISCLAIMER:**

**This unrecorded Record of Survey was donated to the City of Tucson. The City of Tucson provides this data for your personal use "as is." Additionally, the City of Tucson provides this information with the understanding that it is not guaranteed to be accurate, correct or complete and conclusions drawn from such information are the responsibility of the user.**



CURVE DATA				
N°	RADIUS	DELTA	TANGENT	LENGTH CHORD
1	40.0	169°34'32"	453.05	118.62 79.89

**NOTES**

- 1)  $\square$  INDICATES FOUND 1/2" STEEL PIN AT ALL CORNERS UNLESS NOTED
- 2) M - MEASURED
- 3) R - MAP OR DEED RECORD
- 4) \* BASIS OF BEARINGS N 38°02'13"E EASTERLY LINE LOT 7 OF KACHINA HILLS PER BOOK 39 PAGE 61 MAPS AND PLATS.
- 5)  $\star$  BENCHMARK NORTH RIM OF SEWER MANHOLE IN CUL-DE-SAC ASSUMED ELEVATION 100.00
- 6) CAUTION THERE ARE UNDERGROUND UTILITIES IN THE AREA BEFORE DIGGING CALL BLUE-STAKE 745-2211
- 7) SEE DRAWING OF PRIVATE DRAINAGE EASEMENT OVER A PORTION OF LOT 7 BY CELLA BARR AND ASSOC. JOB # 04626 06-02 AND RECORDED IN DOCKET 8709 PAGE 1316
- 8)  $\bullet$  BARREL CACTUS
- 9)  $\star$  PALO VERDE TREE
- 10) 1 FOOT CONTOUR INTERVAL

HACIENDAS CATALINA DEL REY

**TOPOGRAPHICAL SURVEY**

OF A PORTION OF LOT 7 KACHINA HILLS AS RECORDED IN BOOK 39 OF MAPS AND PLATS AT PAGE 61 IN THE OFFICE OF THE PIMA COUNTY RECORDER, PIMA COUNTY ARIZONA



EVERETT M. TRUEBLOOD  
 REGISTERED LAND SURVEYOR  
 TUCSON, ARIZONA  
 JOB # 96-18  
 PH. 1-520-888-2549