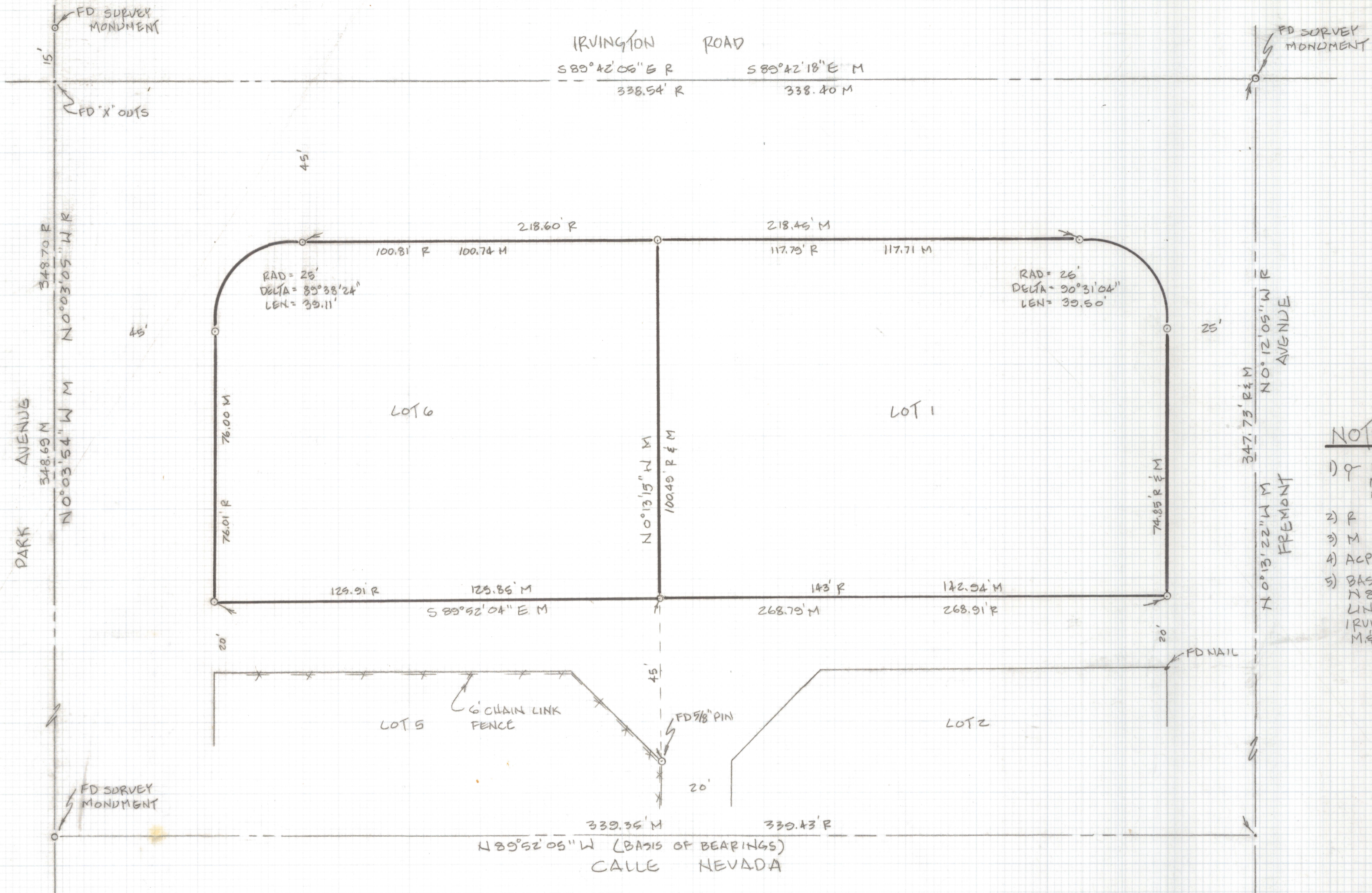


DISCLAIMER:

This unrecorded Record of Survey was donated to the City of Tucson. The City of Tucson provides this data for your personal use "as is." Additionally, the City of Tucson provides this information with the understanding that it is not guaranteed to be accurate, correct or complete and conclusions drawn from such information are the responsibility of the user.



NORTH
SCALE: 1" = 20'

NOTES

- 1) \circ INDICATES SET 1/2" PIN MKD LS 25405 UNLESS NOTED
- 2) R MAP OR DEED RECORD
- 3) M MEASURED
- 4) ACP ALUMINUM CAPPED PIN
- 5) BASIS OF BEARINGS - $N 89^{\circ} 52' 05'' W$ FOR SOUTH LINE OF BLOCK 1 OF IRVINGTON PARK BK 9 PG 98, M & P.

RESULTS OF SURVEY

OF LOT 1 AND LOT 6 OF BLOCK 1 OF IRVINGTON PARK AS SHOWN IN BOOK 9 OF MAPS AND PLATS AT PAGE 98 IN THE OFFICE OF THE PIMA COUNTY RECORDER, PIMA COUNTY, ARIZONA.



EVERETT M. TRUEBLOOD
REGISTERED LAND SURVEYOR
TUCSON, ARIZONA
JOB 96-36