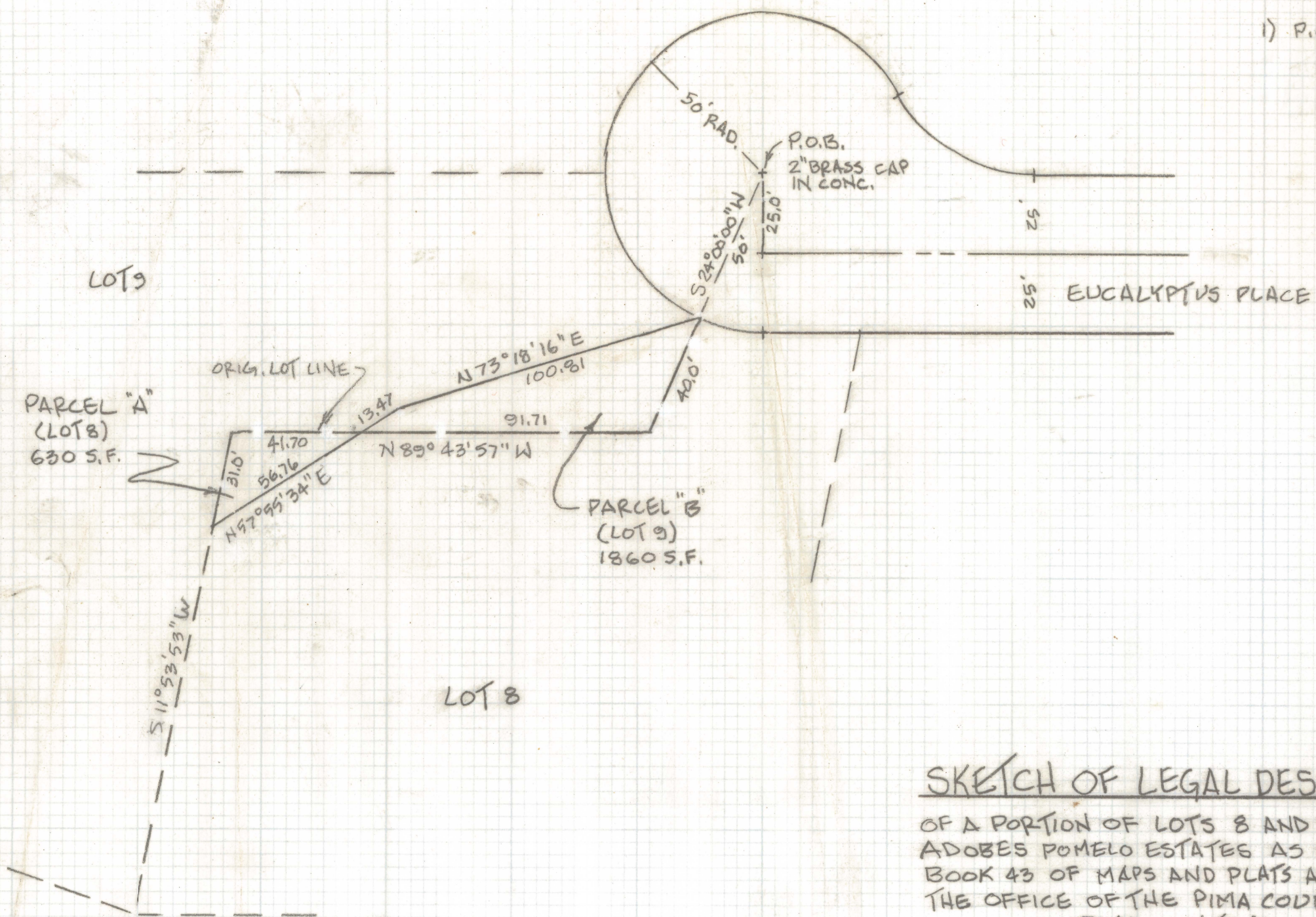


DISCLAIMER:

This unrecorded Record of Survey was donated to the City of Tucson. The City of Tucson provides this data for your personal use "as is." Additionally, the City of Tucson provides this information with the understanding that it is not guaranteed to be accurate, correct or complete and conclusions drawn from such information are the responsibility of the user.

NOTES:

1) P.O.B. POINT OF BEGINNING



SKETCH OF LEGAL DESCRIPTION

OF A PORTION OF LOTS 8 AND 9 OF CASAS
ADOBES POMELO ESTATES AS SHOWN IN
BOOK 43 OF MAPS AND PLATS AT PAGE 69 IN
THE OFFICE OF THE PIMA COUNTY RECORDER,
PIMA COUNTY, ARIZONA.



EVERETT M. TRUEBLOOD
REGISTERED LAND SURVEYOR
TUCSON, ARIZONA
JOB 96-48

Z-2020-978