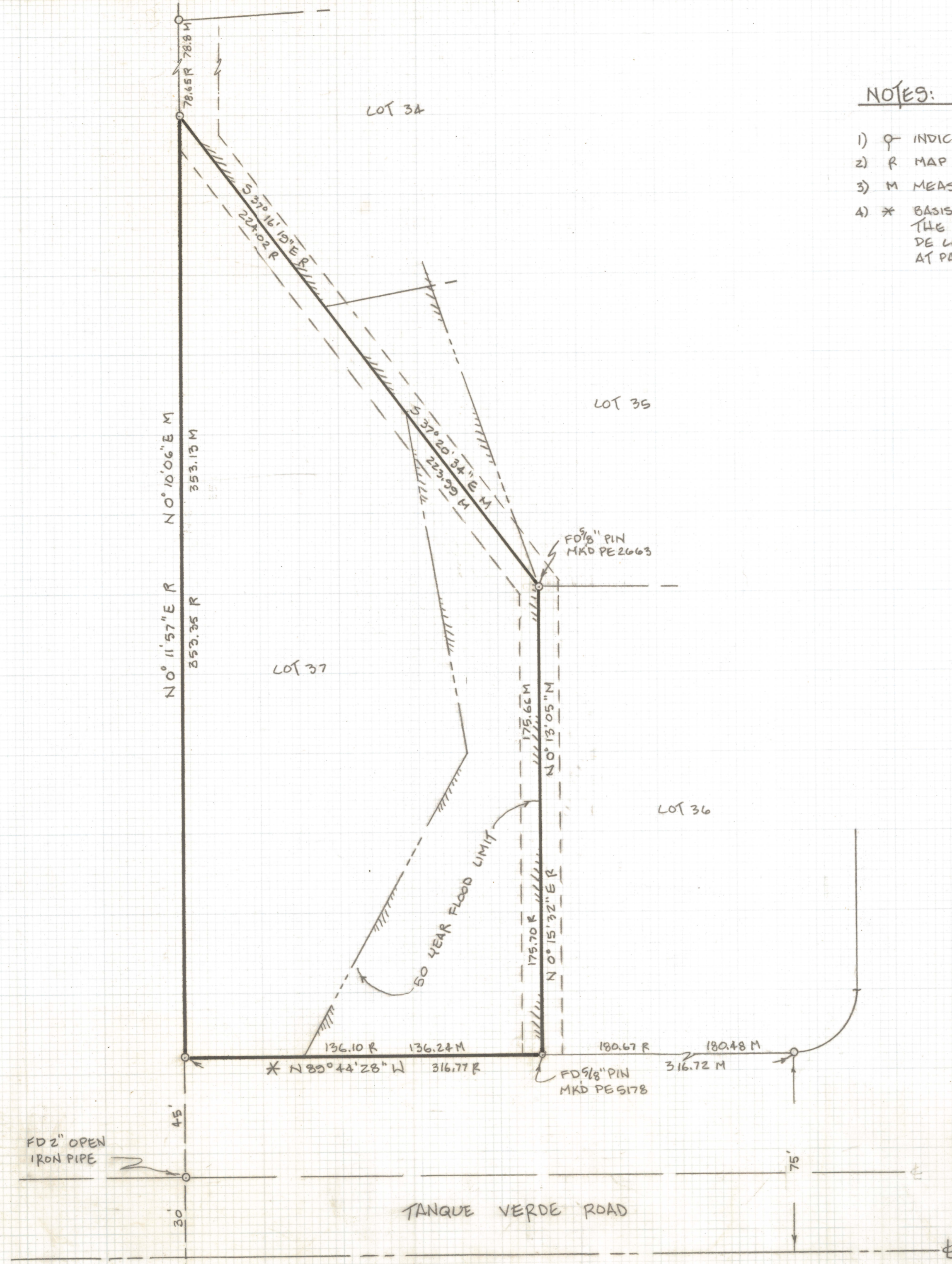


# **DISCLAIMER:**

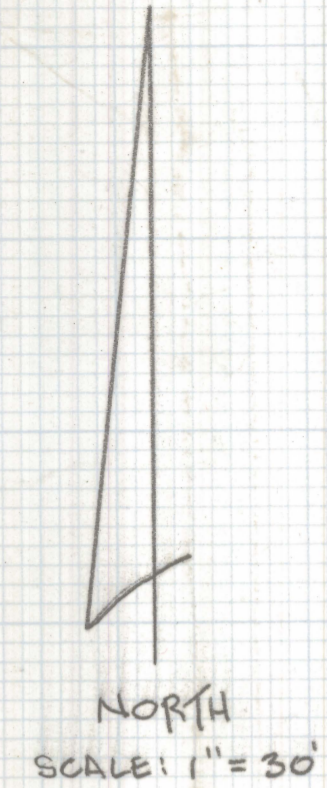
**This unrecorded Record of Survey was donated to the City of Tucson. The City of Tucson provides this data for your personal use "as is." Additionally, the City of Tucson provides this information with the understanding that it is not guaranteed to be accurate, correct or complete and conclusions drawn from such information are the responsibility of the user.**





NOTES:

- 1) ♀ INDICATES FOUND 5/8" PIN UNLESS NOTED
- 2) R MAP OR DEED RECORD
- 3) M MEASURED
- 4) \* BASIS OF BEARINGS - N 89° 44' 28" W FOR THE SOUTH LINE OF LOTS 36 & 37 OF TIERRA DE LAS FLORES PER PLAT RECORDED IN BOOK 24 AT PAGE 72 OF MAPS AND PLATS



RESULTS OF SURVEY

OF LOT 37 OF TIERRA DE LAS FLORES AS SHOWN IN BOOK 24 OF MAPS AND PLATS AT PAGE 72 IN THE OFFICE OF THE PIMA COUNTY RECORDER, PIMA COUNTY, ARIZONA.



EVERETT M. TRUEBLOOD  
REGISTERED LAND SURVEYOR  
TUCSON, ARIZONA  
JOB 96-51