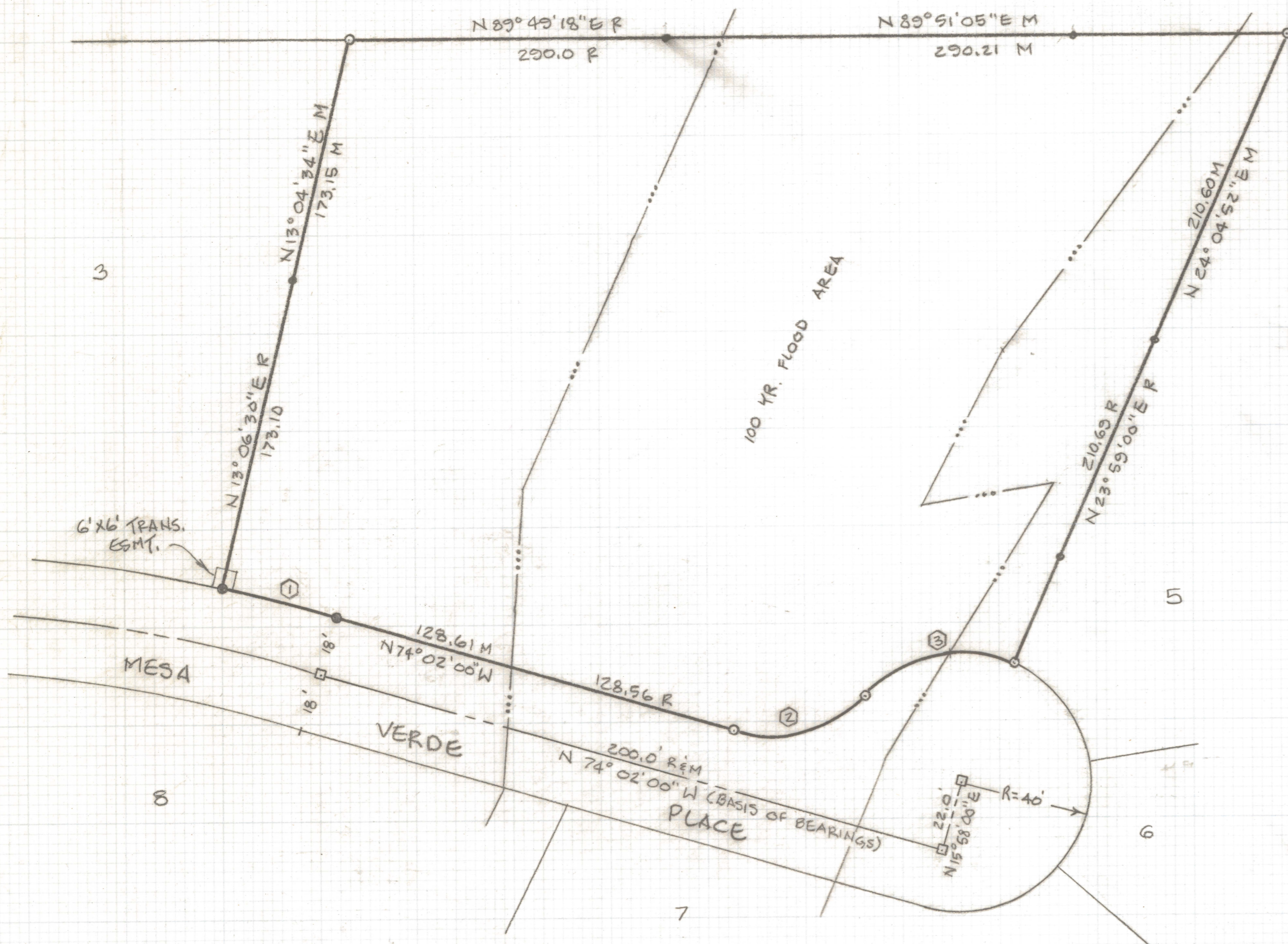


DISCLAIMER:

This unrecorded Record of Survey was donated to the City of Tucson. The City of Tucson provides this data for your personal use "as is." Additionally, the City of Tucson provides this information with the understanding that it is not guaranteed to be accurate, correct or complete and conclusions drawn from such information are the responsibility of the user.

UNSUBDIVIDED



NOTES:

- 1) ♀ INDICATES FOUND 1/2" PIN MKD LS 9432
- 2) ♂ INDICATES SET 1/2" PIN MKD LS 25405
- 3) R MAP OR DEED RECORD
- 4) M MEASURED
- 5) † NAILS SET ON SIDE & REAR PROP. LINES

NORTH
SCALE: 1" = 30'

RESULTS OF SURVEY

OF LOT 4 OF IRONWOOD MESA ESTATES AS SHOWN IN BOOK 30 OF MAPS AND PLATS AT PAGE 71 IN THE OFFICE OF THE PIMA COUNTY RECORDER, PIMA COUNTY, ARIZONA.

CURVE TABLE

NO.	DELTA	RAD	LEN	TAN	CHD
1-R	4° 11' 43"	478.0	35.00	17.51	34.99
1-M	"	"	"	"	"
2-R	63° 15' 23"	40.0	44.16	24.64	41.95
2-M	63° 14' 20"	39.87	44.01	24.55	41.81
3-R	71° 16' 33"	40.0	49.76	28.68	46.61
3-M	70° 57' 27"	40.10	49.66	28.58	46.55



EVERETT M. TRUEBLOOD
REGISTERED LAND SURVEYOR
TUCSON, ARIZONA
JOB 96-58