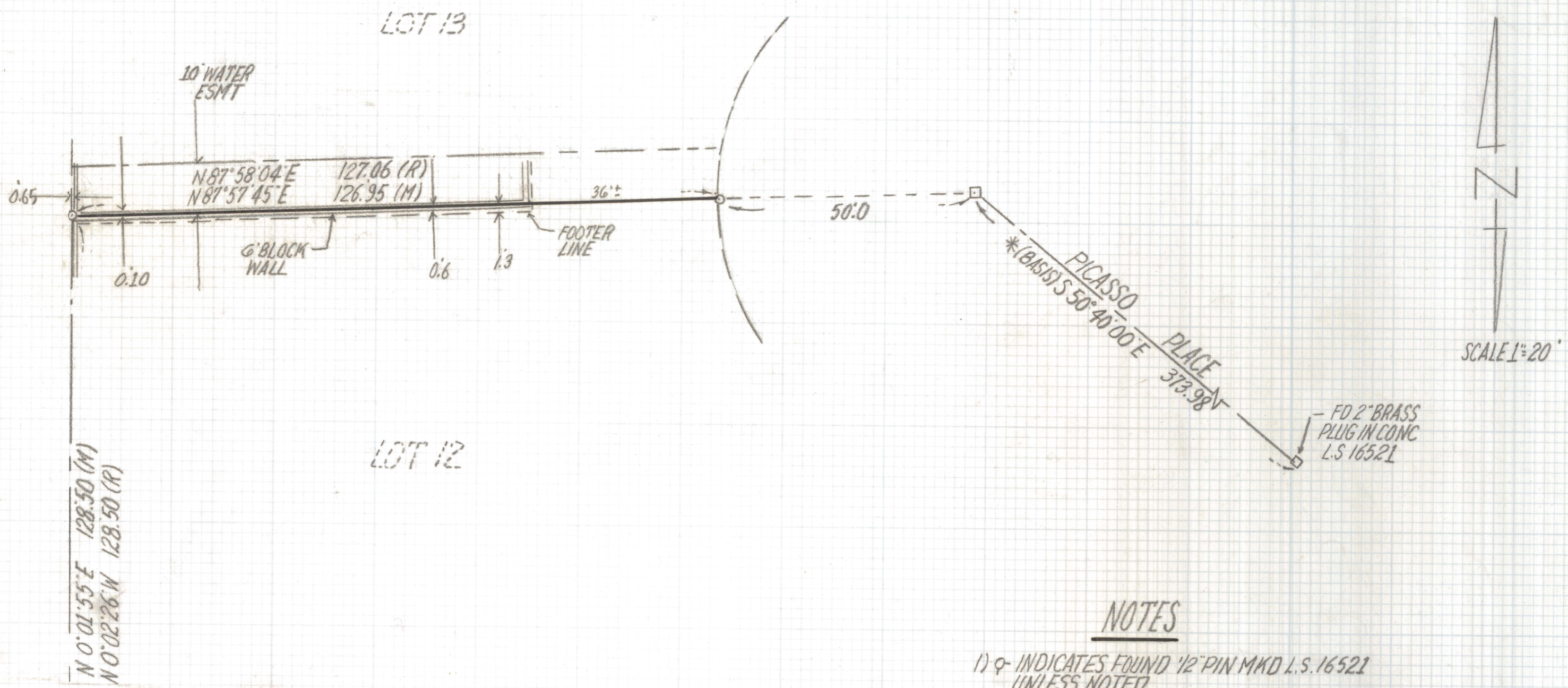


DISCLAIMER:

This unrecorded Record of Survey was donated to the City of Tucson. The City of Tucson provides this data for your personal use "as is." Additionally, the City of Tucson provides this information with the understanding that it is not guaranteed to be accurate, correct or complete and conclusions drawn from such information are the responsibility of the user.



OLD LOT LINE
SEE NOTE #5

NEW LOT LINE

RESULTS OF SURVEY

OF THE NORTH LINE OF LOT 12 TIERRA BRAVA ESTATES
AS RECORDED IN BOOK 44 OF MAPS AND PLATS AT PAGE
59 IN THE OFFICE OF THE PIMA COUNTY RECORDER
PIMA COUNTY, ARIZONA.

NOTES

- 1) ♀ INDICATES FOUND 1/2" PIN MKD L.S. 16521 UNLESS NOTED.
- 2) M - MEASURED
- 3) R - MAP OR DEED RECORD
- 4) * BASIS OF BEARINGS S 50° 40' 00" E CENTERLINE PICASSO PLACE PER TIERRA BRAVA EST.
- 5) SEE LEGAL DESCRIPTION BY SOUTHWEST ENGINEERS # 911 DATED 5-5-94 REVISION OF SOUTH PROPERTY LINE LOT 12.



EVERETT M TRUEBLOOD
REGISTERED LAND SURVEYOR
TUCSON, ARIZONA
JOB # 96-64