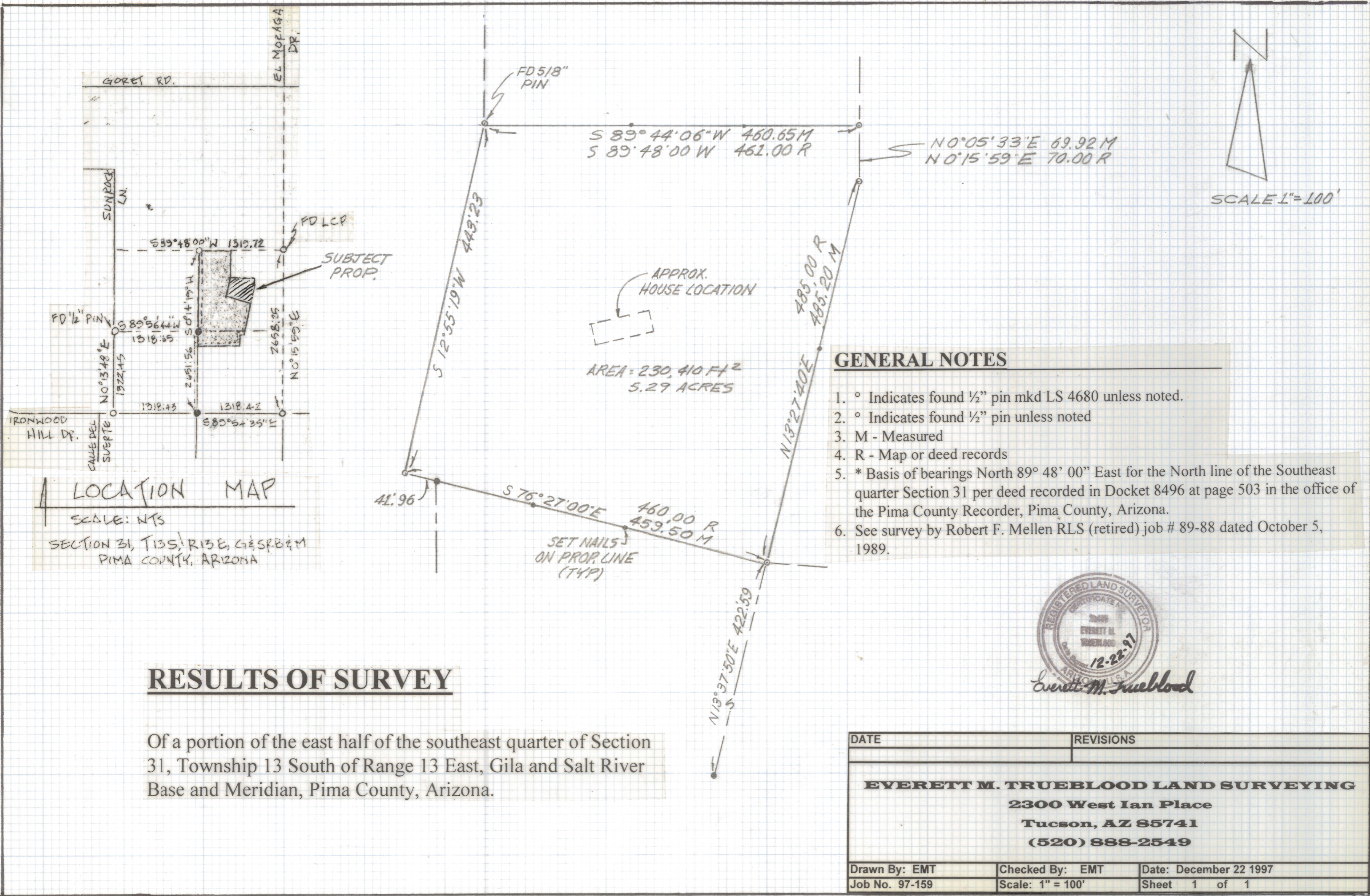


DISCLAIMER:

This unrecorded Record of Survey was donated to the City of Tucson. The City of Tucson provides this data for your personal use "as is." Additionally, the City of Tucson provides this information with the understanding that it is not guaranteed to be accurate, correct or complete and conclusions drawn from such information are the responsibility of the user.



GENERAL NOTES

1. ° Indicates found 1/2" pin mkd LS 4680 unless noted.
2. ° Indicates found 1/2" pin unless noted
3. M - Measured
4. R - Map or deed records
5. * Basis of bearings North 89° 48' 00" East for the North line of the Southeast quarter Section 31 per deed recorded in Docket 8496 at page 503 in the office of the Pima County Recorder, Pima County, Arizona.
6. See survey by Robert F. Mellen RLS (retired) job # 89-88 dated October 5, 1989.



RESULTS OF SURVEY

Of a portion of the east half of the southeast quarter of Section 31, Township 13 South of Range 13 East, Gila and Salt River Base and Meridian, Pima County, Arizona.

DATE		REVISIONS
EVERETT M. TRUEBLOOD LAND SURVEYING 2300 West Ian Place Tucson, AZ 85741 (520) 888-2549		
Drawn By: EMT	Checked By: EMT	Date: December 22 1997
Job No. 97-159	Scale: 1" = 100'	Sheet 1 of 1