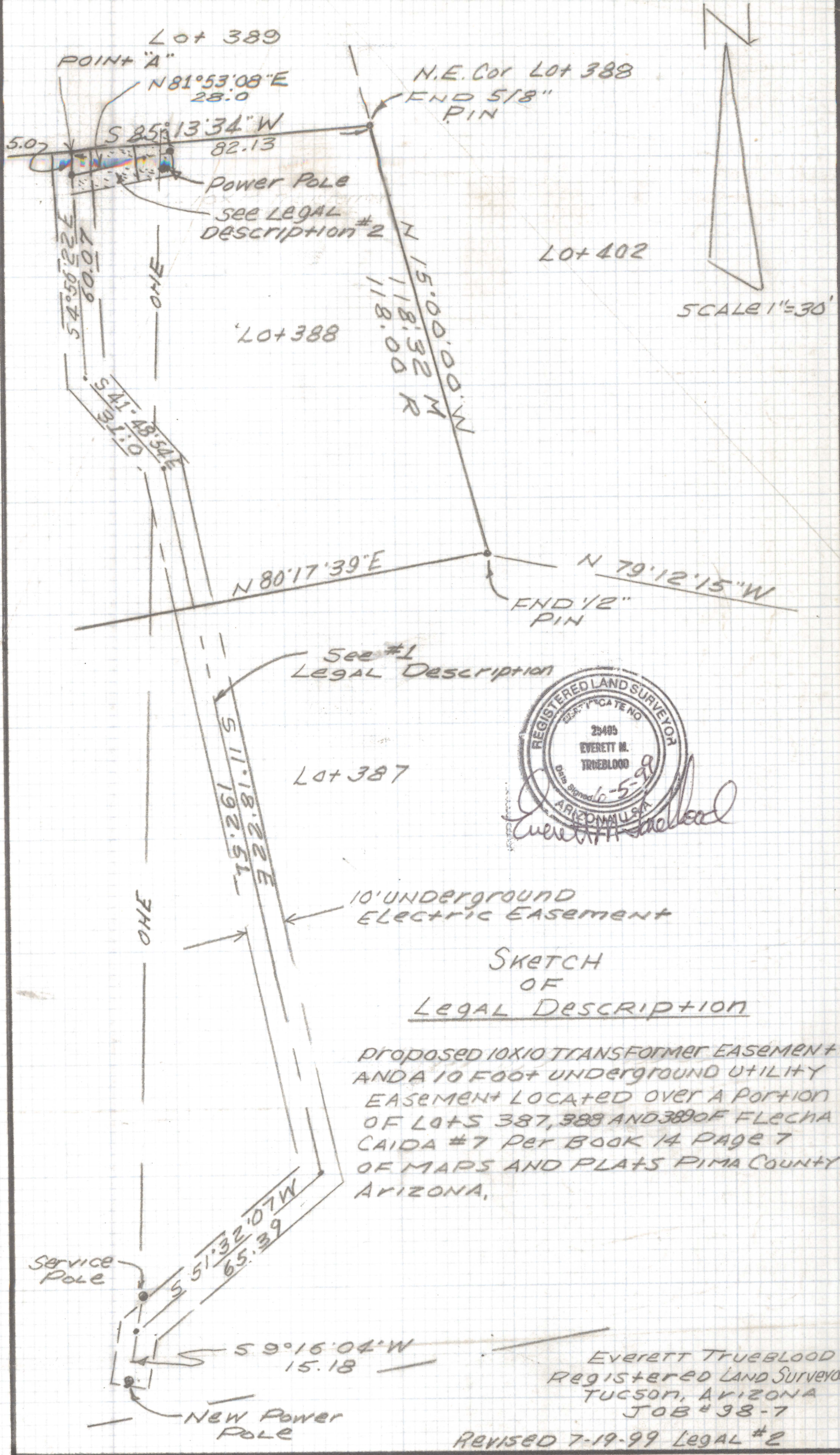


DISCLAIMER:

This unrecorded Record of Survey was donated to the City of Tucson. The City of Tucson provides this data for your personal use "as is." Additionally, the City of Tucson provides this information with the understanding that it is not guaranteed to be accurate, correct or complete and conclusions drawn from such information are the responsibility of the user.



SKETCH
OF
LEGAL DESCRIPTION

PROPOSED 10X10 TRANSFORMER EASEMENT AND A 10 FOOT UNDERGROUND UTILITY EASEMENT LOCATED OVER A PORTION OF LOTS 387, 388 AND 389 OF FLECHA CAIDA #7 PER BOOK 14 PAGE 7 OF MAPS AND PLATS PIMA COUNTY ARIZONA,

EVERETT TRUEBLOOD
REGISTERED LAND SURVEYOR
TUCSON, ARIZONA
JOB # 98-7

REVISED 7-19-99 LEGAL #2