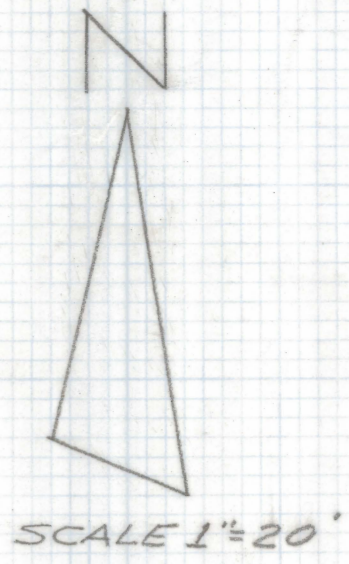
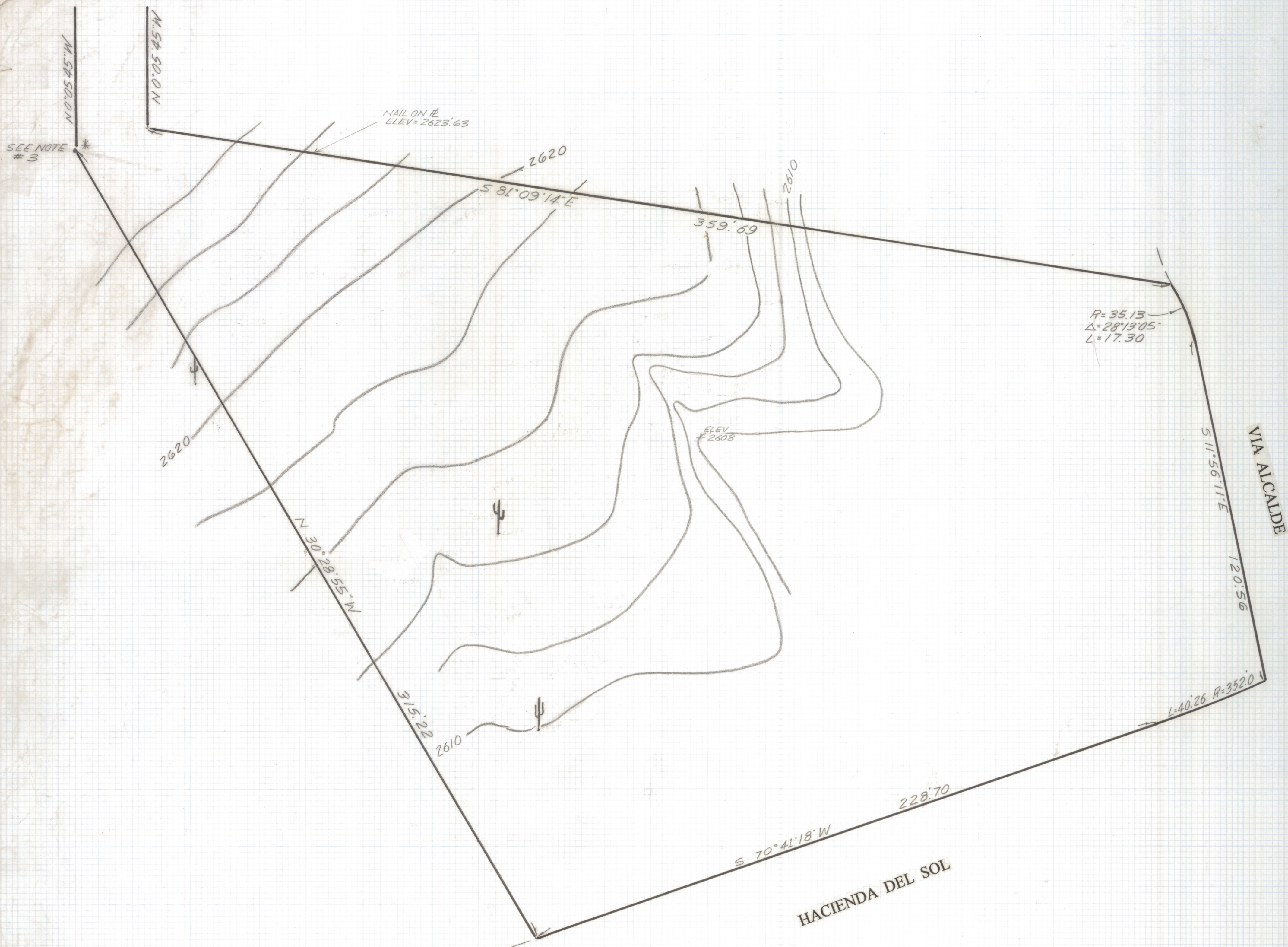


DISCLAIMER:

This unrecorded Record of Survey was donated to the City of Tucson. The City of Tucson provides this data for your personal use "as is." Additionally, the City of Tucson provides this information with the understanding that it is not guaranteed to be accurate, correct or complete and conclusions drawn from such information are the responsibility of the user.



- GENERAL NOTES**
1. This is not a boundary survey.
 2. Contour interval 2 feet.
 3. * Benchmark top of pin assumed elevation of 2630.00 as shown on preliminary plat of Colonia Del Sol and based on 2" B.C.S.M. at intersection of Via Alcalde and Hacienda Del Sol elev = 2596.15.

TOPOGRAPHICAL SURVEY

Of a portion of Lot 3 Colonia Del Sol as recorded in Book 43 of Maps and Plats at Page 73 in the Office of the Pima County Recorder, Pima County, Arizona.



DATE	REVISIONS
EVERETT M. TRUEBLOOD LAND SURVEYING 2300 West Ian Place Tucson, AZ 85741 (520) 888-2549	
Drawn By: EMT	Checked By: EMT
Job No. 88-34	Date: March 13, 1998
Scale: 1" = 20'	Sheet 1 of 1

Z-2021-0030