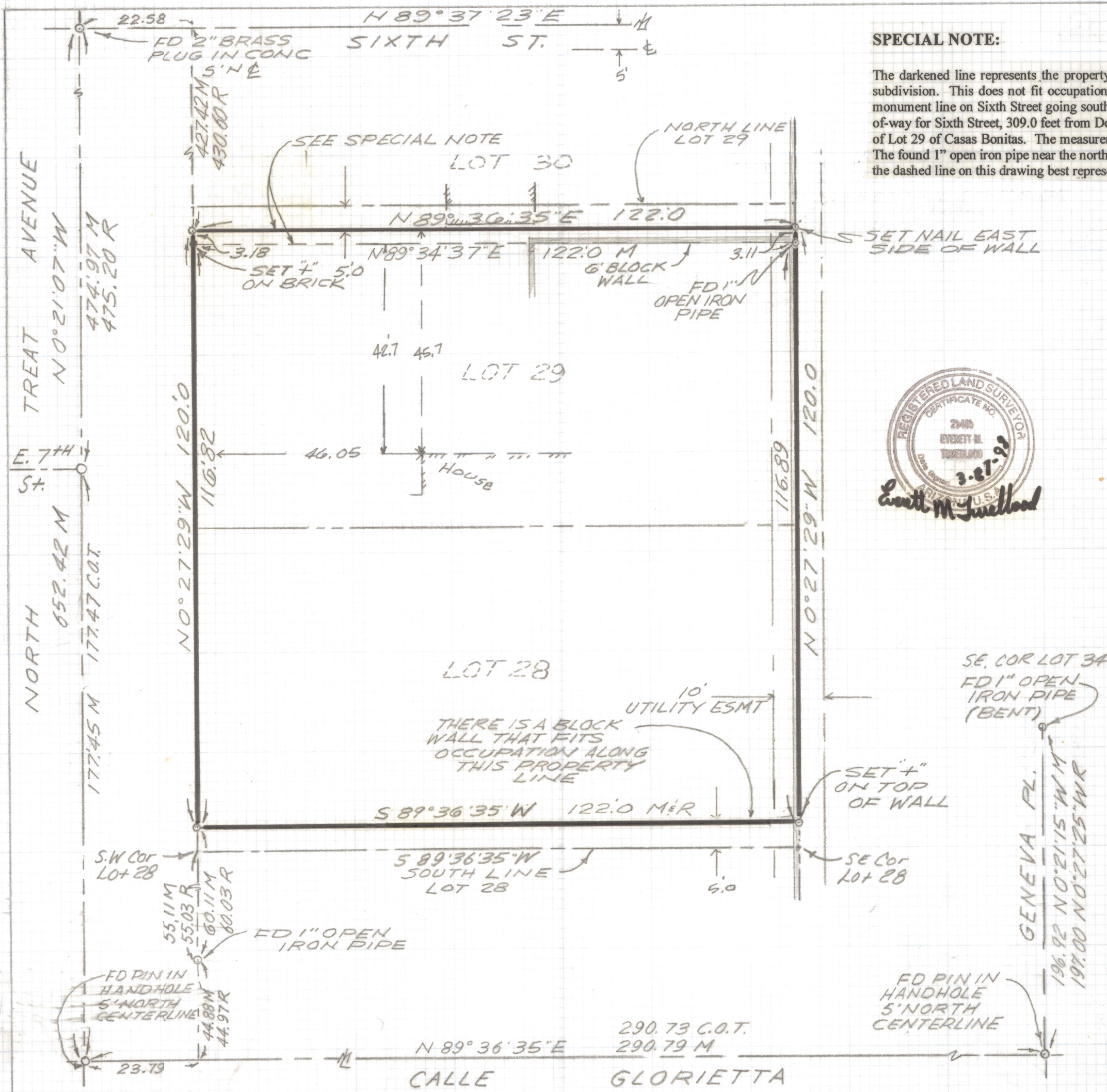


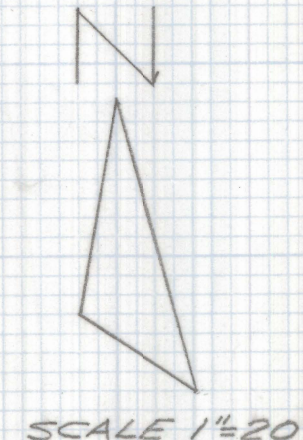
DISCLAIMER:

This unrecorded Record of Survey was donated to the City of Tucson. The City of Tucson provides this data for your personal use "as is." Additionally, the City of Tucson provides this information with the understanding that it is not guaranteed to be accurate, correct or complete and conclusions drawn from such information are the responsibility of the user.



SPECIAL NOTE:

The darkened line represents the property line based on measurements made from the south line of the subdivision. This does not fit occupation. The dashed line represents the record measurement from the monument line on Sixth Street going south 430.60 feet. The 430.60 feet is the total of 44.60 feet for right-of-way for Sixth Street, 309.0 feet from Docket 19 Page 219, and 72.0 feet for Lot 30 and the north 5.0 feet of Lot 29 of Casas Bonitas. The measurement made from the monument line fits the existing occupation. The found 1" open iron pipe near the northeast corner appears to verify this line. Therefore, in my opinion, the dashed line on this drawing best represents the north line of this property.



NOTES

- 1) ♀ INDICATES SET 1/2" PIN MKD R.L.S. 25405 UNLESS NOTED.
- 2) M- MEASURED
- 3) R- MAP OR DEED RECORD
- 4) * BASIS OF BEARINGS N 89° 36' 35" E MONUMENT LINE OF CALLE GLORIETTA PER CASAS BONITAS BOOK 8 PAGE 28 MAPS AND PLATS
- 5) C.O.T. CITY OF TUCSON
- 6) M- MONUMENT LINE
- 7) 1/2 HALF RIGHT-OF-WAY FOR SIXTH STREET IS 39.6 THE MONUMENT LINE IS 5 FOOT NORTH

RESULTS OF SURVEY

OF PORTIONS OF LOTS 28 AND 29 BLOCK "A" OF CASAS BONITAS AS RECORDED IN BOOK 8 OF MAPS AND PLATS AT PAGE 28 IN THE OFFICE OF THE PIMA COUNTY RECORDER PIMA COUNTY, ARIZONA.



DATE		REVISIONS
EVERETT TRUEBLOOD LAND SURVEYING 2300 West Ian Place Tucson, AZ 85741 (520) 888-2549		
Drawn By: EMT	Checked By: EMT	Date: March 27, 1998
Job No. 98-36	Scale: 1" = 20'	Sheet 1 of 1

Z-2021-0032