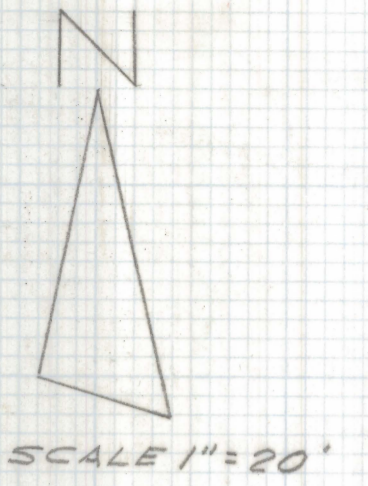
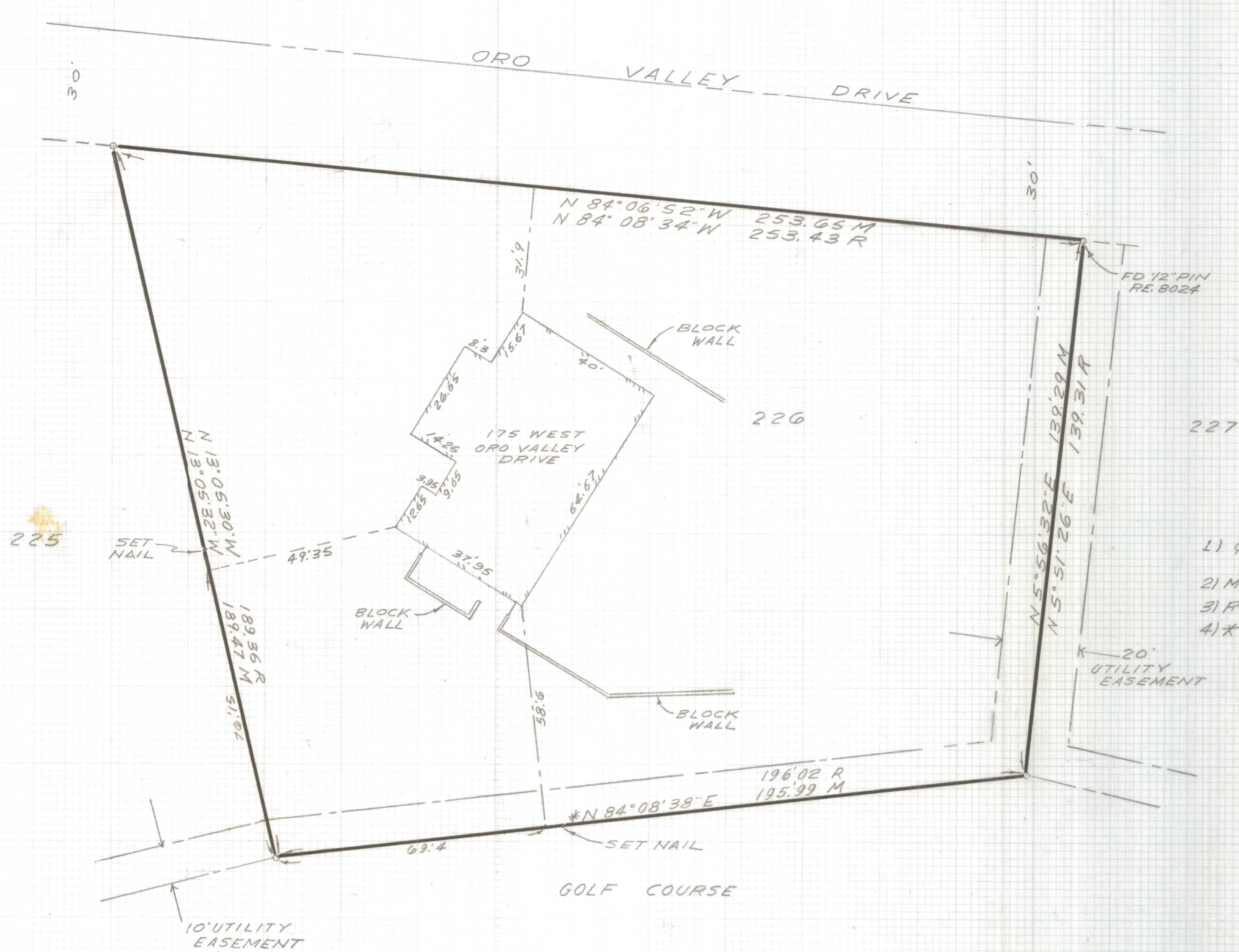


DISCLAIMER:

This unrecorded Record of Survey was donated to the City of Tucson. The City of Tucson provides this data for your personal use "as is." Additionally, the City of Tucson provides this information with the understanding that it is not guaranteed to be accurate, correct or complete and conclusions drawn from such information are the responsibility of the user.



NOTES

- 1) ♀ INDICATES FOUND 5/8" STEEL PIN UNLESS NOTED
- 2) M- MEASURED
- 3) R- MAP OR DEED RECORD
- 4) * BASIS OF BEARINGS N 84° 08' 38" E SOUTH LINE OF LOT 226 OF ORO VALLEY ESTATES PER BOOK 13 PAGE 60 MAPS AND PLATS

RESULTS OF SURVEY

OF LOT 226 OF ORO VALLEY ESTATES AS RECORDED IN BOOK 13 OF MAPS AND PLATS AT PAGE 60 IN THE OFFICE OF THE PIMA COUNTY RECORDER PIMA COUNTY ARIZONA.



Everett M. Trueblood

EVERETT M. TRUEBLOOD
REGISTERED LAND SURVEYOR
TUCSON, ARIZONA
JOB # 98-57