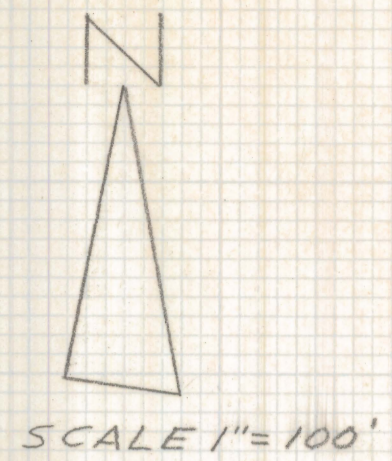
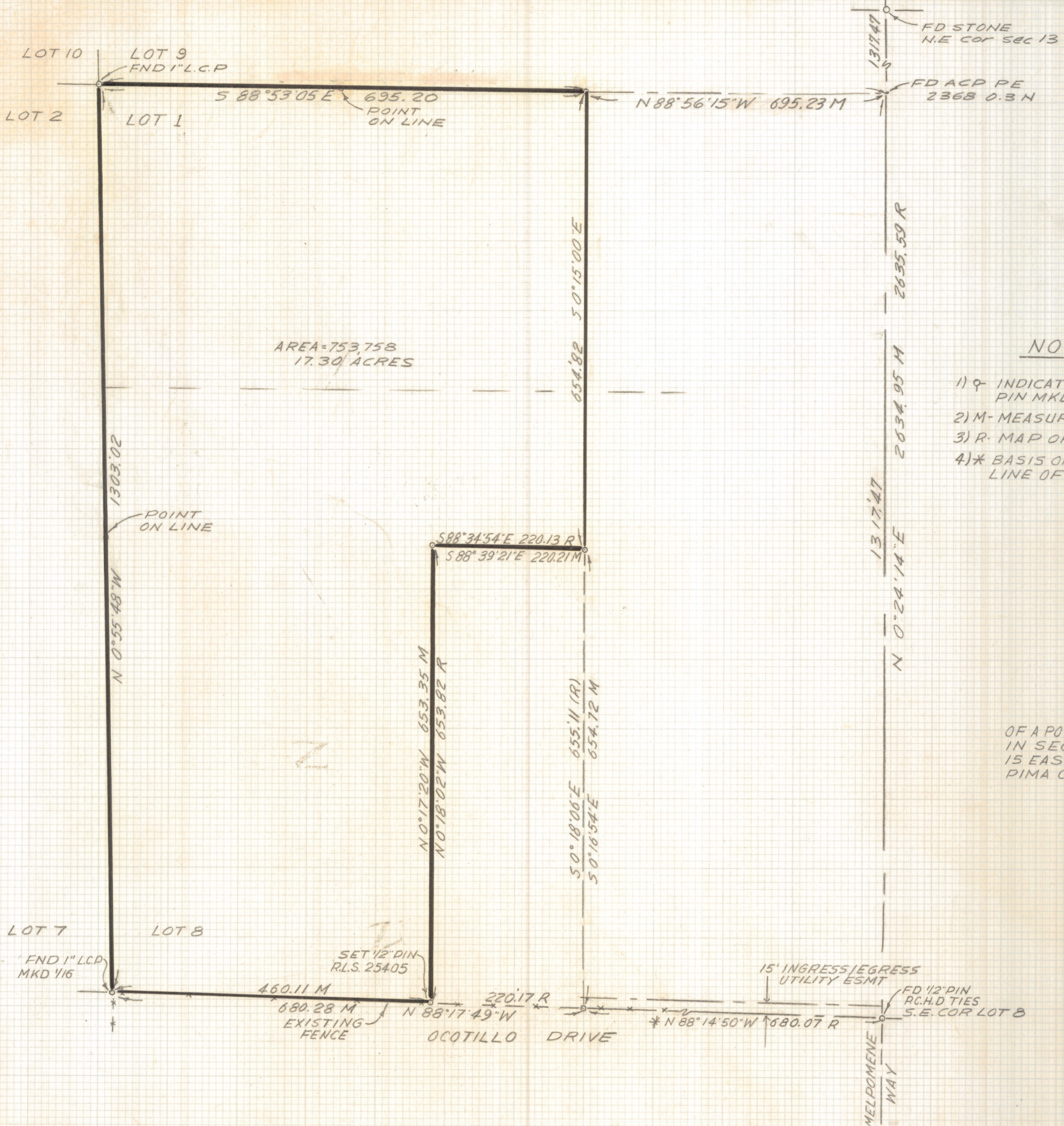


DISCLAIMER:

This unrecorded Record of Survey was donated to the City of Tucson. The City of Tucson provides this data for your personal use "as is." Additionally, the City of Tucson provides this information with the understanding that it is not guaranteed to be accurate, correct or complete and conclusions drawn from such information are the responsibility of the user.

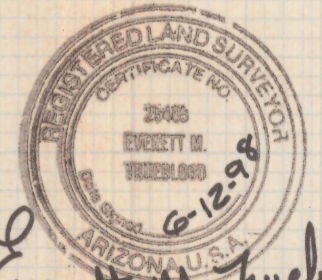


NOTES

- 1) ♀ INDICATES FOUND ALUMINUM CAPPED PIN MKD RLS 7599 UNLESS NOTED
- 2) M- MEASURED
- 3) R- MAP OR DEED RECORD
- 4) * BASIS OF BEARINGS N 88°14'50"W SOUTH LINE OF LOT 8 PER DOCKET 7978 PAGE 416

RESULTS OF SURVEY

OF A PORTION OF THE WEST HALF OF LOTS 1 AND 8 IN SECTION 13 TOWNSHIP 13 SOUTH OF RANGE 15 EAST GILA SALT RIVER BASE AND MERIDIAN PIMA COUNTY, ARIZONA.



Everett M. Trueblood

EVERETT M. TRUEBLOOD
REGISTERED LAND SURVEYOR
TUCSON, ARIZONA
JOB# 98-84