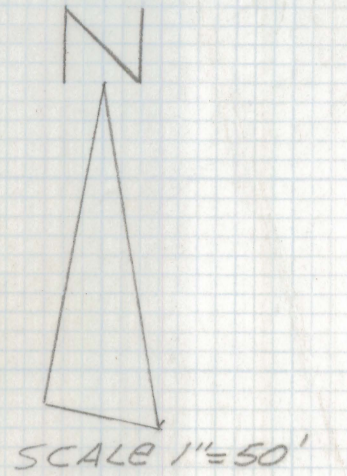


# **DISCLAIMER:**

**This unrecorded Record of Survey was donated to the City of Tucson. The City of Tucson provides this data for your personal use "as is." Additionally, the City of Tucson provides this information with the understanding that it is not guaranteed to be accurate, correct or complete and conclusions drawn from such information are the responsibility of the user.**

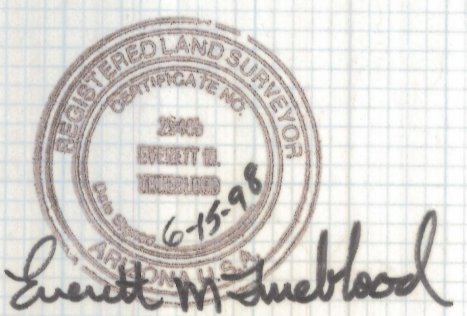
N°	Bearing	Distance
L-1	N 19° 52' 08" E	12.50
L-2	S 70° 07' 52" E	62.5
L-3	N 64° 11' 11" E	121.32
L-4	S 70° 06' 00" E	135.0
L-5	N 19° 54' 00" E	34.0
L-6	S 0° 11' 18" E	46.85
L-7	N 70° 06' 00" W	118.94
L-8	S 64° 11' 11" W	124.79
L-9	N 70° 07' 52" W	92.23



- NOTES**
- 1) ♀ INDICATES SET 1/2" PIN MKD R.L.S. 25405 UNLESS NOTED
  - 2) M-MEASURED
  - 3) R-MAP OR DEED RECORD
  - 4) \* BASIS OF BEARINGS S 70° 06' 00" E PER PROPERTY LINE MENTIONED IN DOCKET # 3015 AT PAGE 10
  - 5) SEE DESERT WILLOWS SUBDIVISION BOOK 45 PAGE 98 MAPS AND PLATS

**RESULTS OF SURVEY**

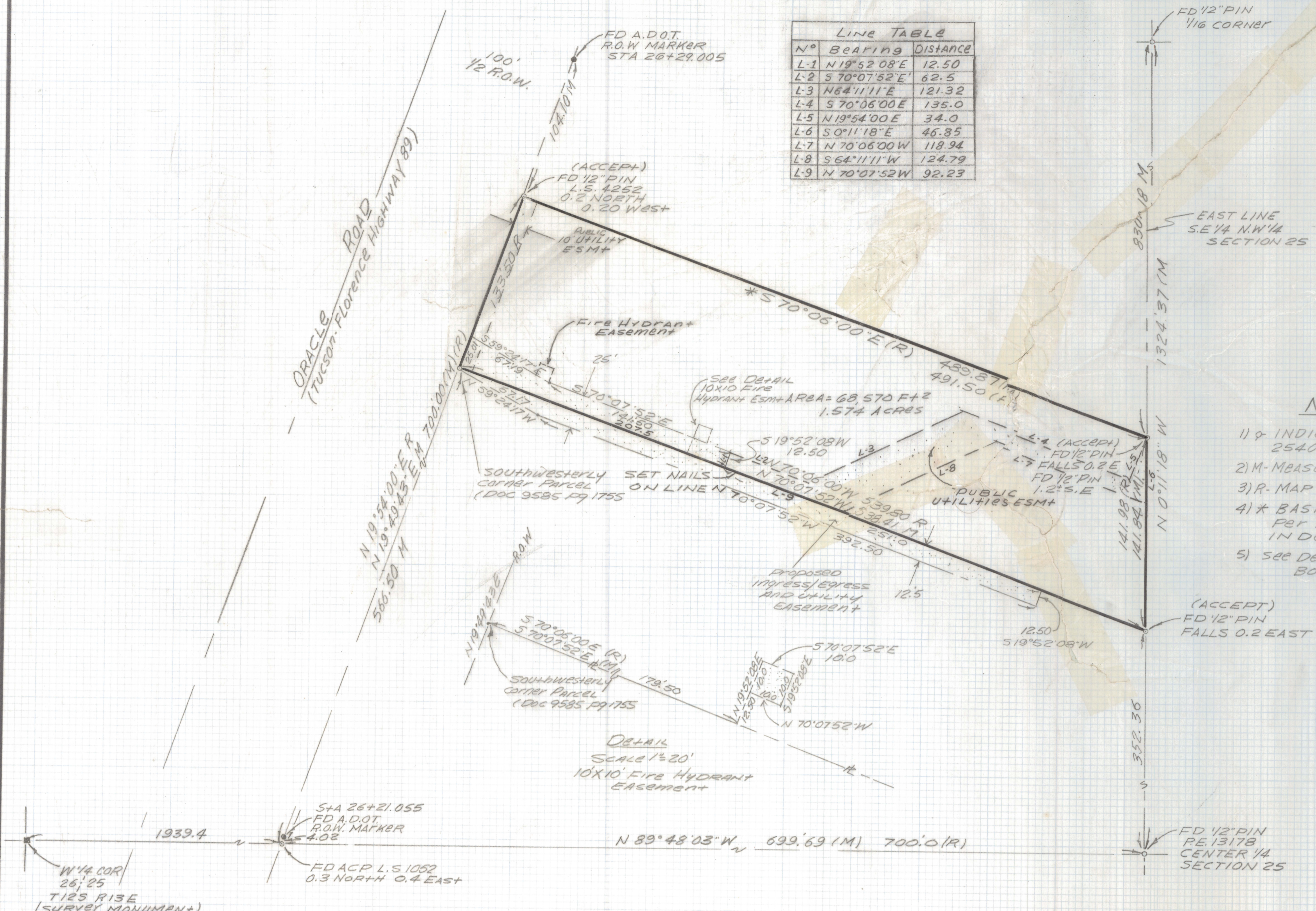
OF A PORTION OF THE SOUTHEAST QUARTER OF THE NORTHWEST QUARTER OF SECTION 25, TOWNSHIP 12 SOUTH OF RANGE 13 EAST GILA AND SALT RIVER BASE AND MERIDIAN PIMA COUNTY, ARIZONA,



EVERETT M. TRUEBLOOD  
REGISTERED LAND SURVEYOR  
TUCSON, ARIZONA  
JOB # 98-86

Revised 3-10-99 PUBLIC UTILITY ESMI  
Revised Proposed Easements 9-16-98

Z-2021-0048



ORACLE ROAD  
(Tucson-Florence Highway 89)

FD A.D.O.T. R.O.W. MARKER STA 26+29.005

(ACCEPT) FD 1/2" PIN L.S. 4252 0.2 NORTH 0.20 WEST

FIRE HYDRANT EASEMENT

SEE DETAIL 10x10 FIRE HYDRANT ESMI AREA = 68,570 FT<sup>2</sup> 1.574 ACRES

SOUTHWESTERLY CORNER PARCEL (DOC 9585 P9 1755)

SOUTHWESTERLY CORNER PARCEL (DOC 9585 P9 1755)

DETAIL SCALE 1/20' 10x10' FIRE HYDRANT EASEMENT

STA 26+21.055 FD A.D.O.T. R.O.W. MARKER L.S. 1052 0.3 NORTH 0.4 EAST

W 1/4 COR 26; 25 T12S R13E (SURVEY MONUMENT)

(ACCEPT) FD 1/2" PIN FALLS 0.2 EAST

FD 1/2" PIN RE. 13178 CENTER 1/4 SECTION 25